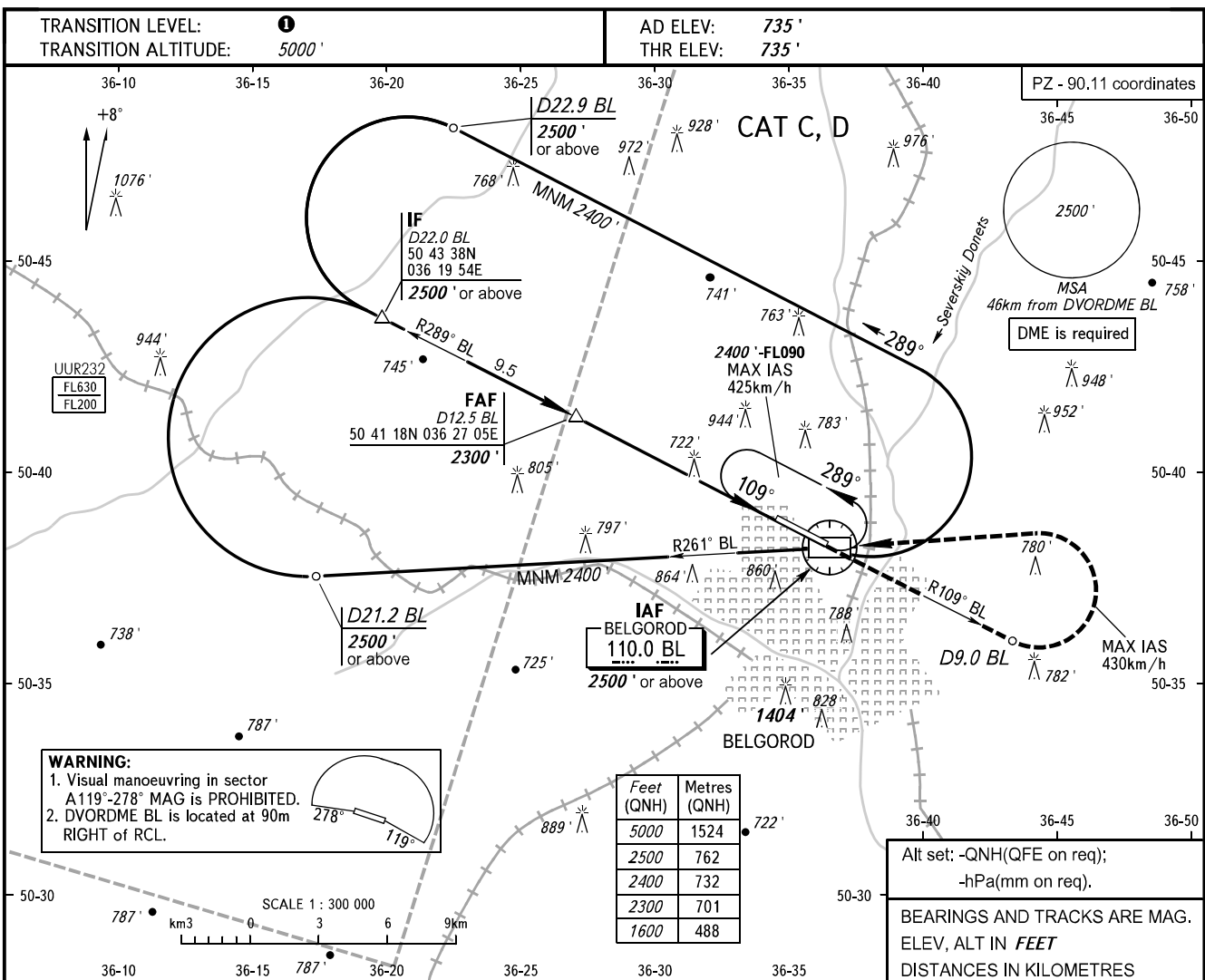


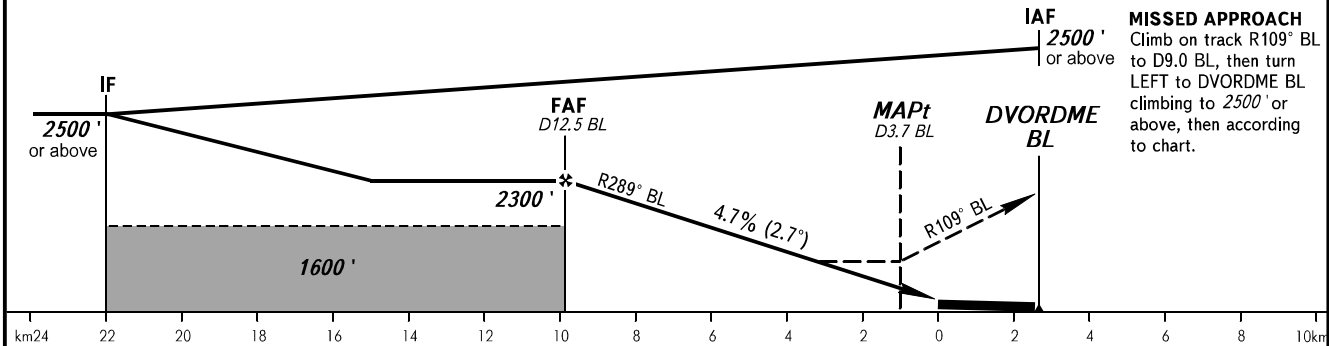
**INSTRUMENT
APPROACH
CHART - ICAO**

TOWER **118.200**

BELGOROD, RUSSIA
BELGOROD
DVOR Z RWY 11



| | | | | | |
|--------------|-------|-------|-------|-------|------|
| DIST to RW11 | 9.4 | 7.4 | 5.4 | 3.4 | 1.4 |
| DME BL | 12.0 | 10.0 | 8.0 | 6.0 | 4.0 |
| ALTITUDE | 2210' | 1910' | 1600' | 1290' | 990' |



| OCA(H) | | A | B | C | D | | | | | |
|----------------------|----------|-----|-----|--------------|--------------|-----|-----|-----|------|------|
| Straight-in Approach | | | | 1080' (339') | 1080' (339') | | | | | |
| | Circling | | | 1340' (602') | 1340' (602') | | | | | |
| GROUND SPEED | km/h | 150 | 180 | 210 | 240 | 270 | 300 | 330 | 360 | 390 |
| RATE OF DESCENT | m/s | 2.2 | 2.6 | 3.0 | 3.5 | 8.9 | 4.3 | 4.8 | 5.2 | 5.6 |
| | ft/min | 427 | 512 | 597 | 682 | 768 | 853 | 938 | 1024 | 1109 |

TRANSITION LEVEL:
- FL060 when QNH is 1013 hPa (760mm mercury column) or above;
- FL070 when QNH is 977 hPa (733mm mercury column) or above, but less than 1013 hPa (760mm mercury column);
- FL080 when QNH is less than 977 hPa (733mm mercury column).

CHANGE: New chart