

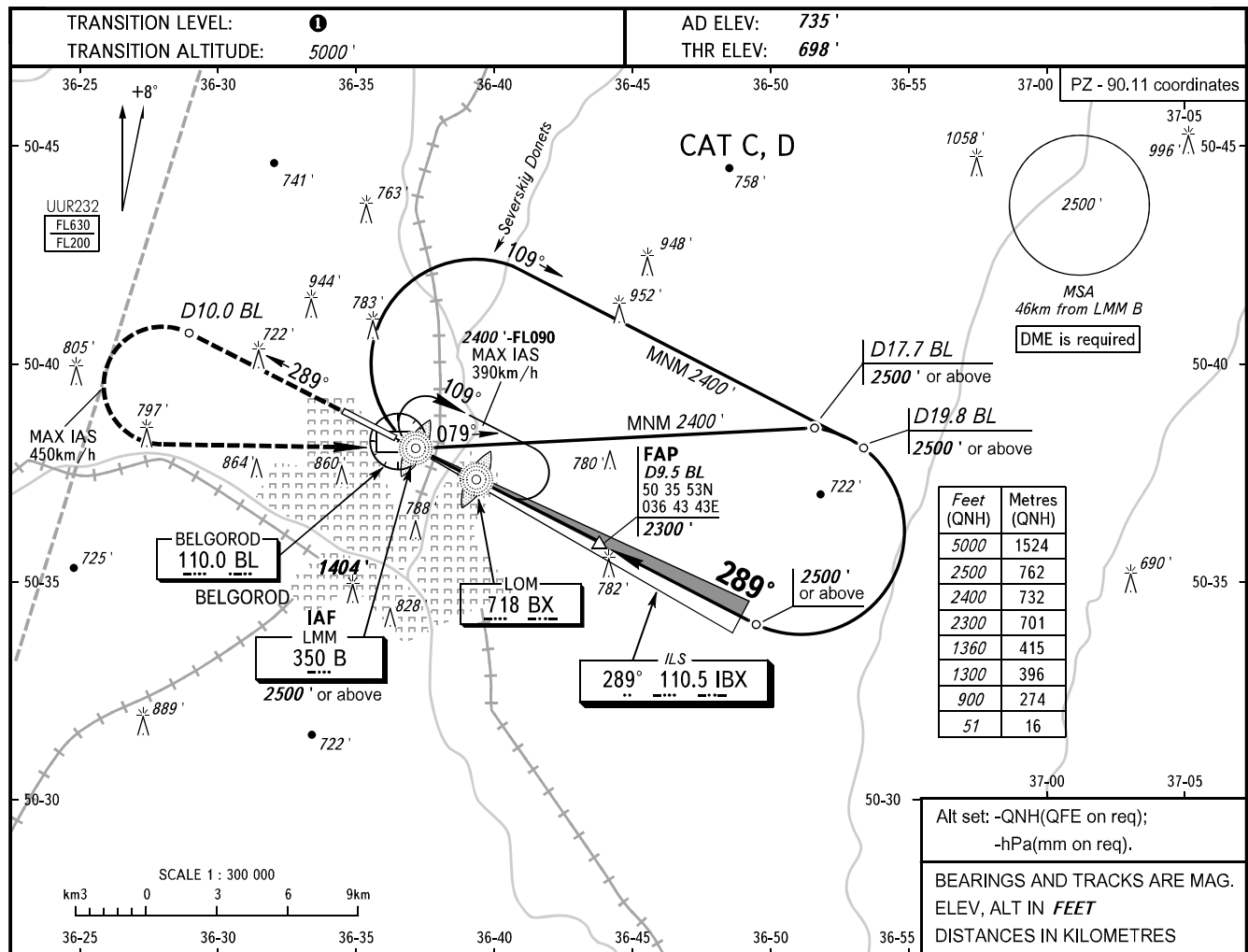
**INSTRUMENT
APPROACH
CHART - ICAO**

**BELGOROD, RUSSIA
BELGOROD
ILS W RWY 29**

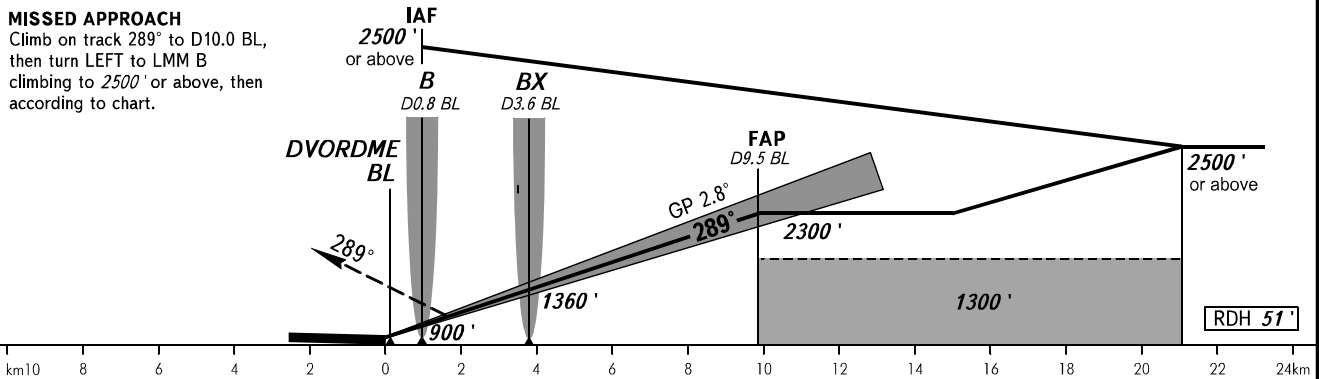
TOWER 118.200

TRANSITION LEVEL: **5000'**
TRANSITION ALTITUDE: **5000'**

AD ELEV: **735'**
THR ELEV: **698'**



MISSED APPROACH
Climb on track 289° to D10.0 BL, then turn LEFT to LMM B climbing to 2500' or above, then according to chart.



	OCA(H)	MNM climb gradient	A	B	C	D
Straight-in Approach		2.5%			930' (231')	940' (242')
		4.0%			916' (217')	926' (228')
Circling					1340' (602')	1340' (602')

TRANSITION LEVEL:
- FL060 when QNH is 1013 hPa (760mm mercury column) or above;
- FL070 when QNH is 977 hPa (733mm mercury column) or above, but less than 1013 hPa (760mm mercury column);
- FL080 when QNH is less than 977 hPa (733mm mercury column).

WARNING
Visual manoeuvring in sector A119°-278° MAG is PROHIBITED.

GROUND SPEED	km/h	150	180	210	240	270	300	330	360	390
	RATE OF DESCENT	m/s	2.2	2.6	3.0	3.6	6.9	4.3	4.8	5.2
	ft/min	427	512	597	682	768	853	938	1024	1109