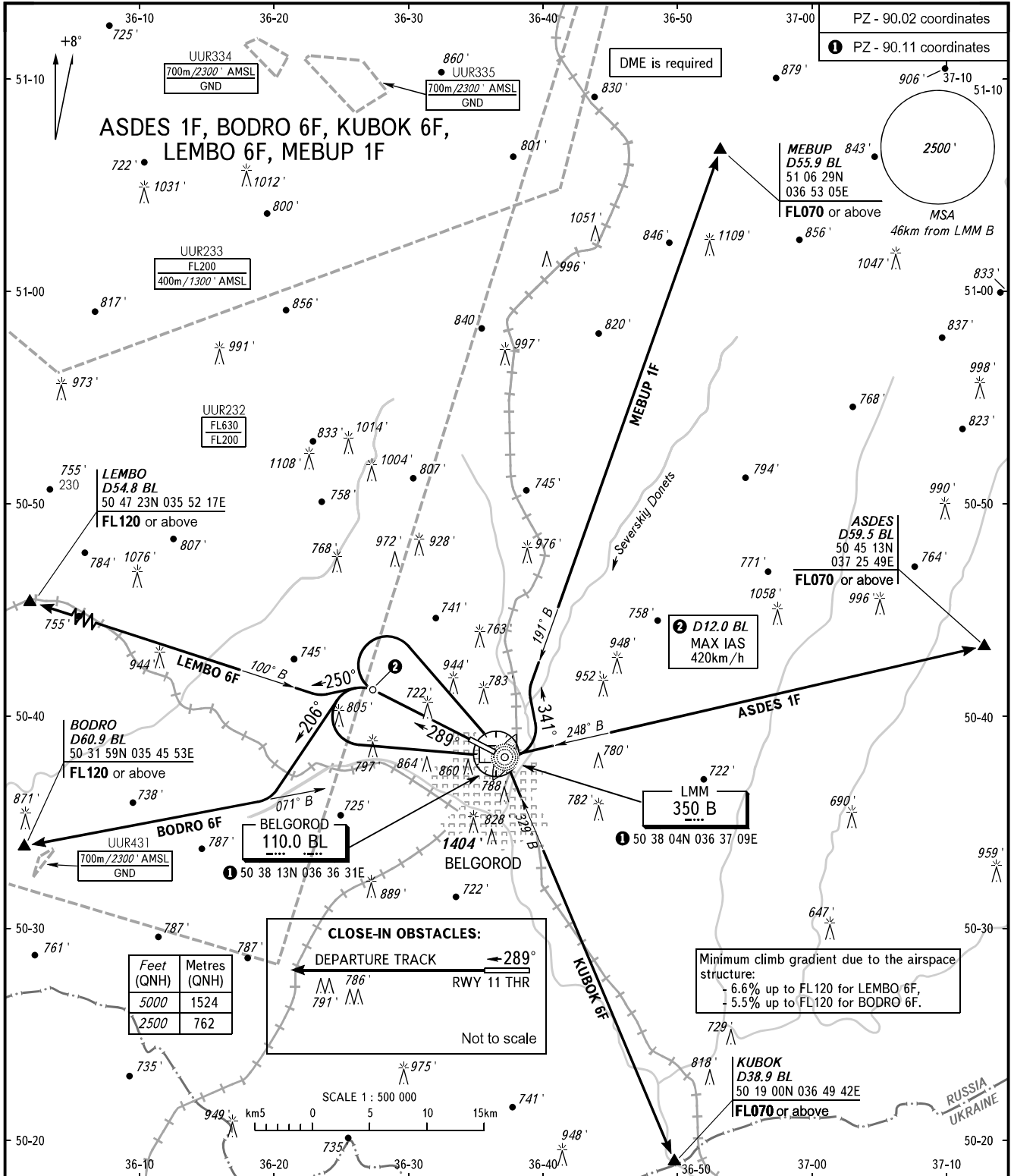


STANDARD DEPARTURE CHART
INSTRUMENT (SID) - ICAO

TRANSITION
ALTITUDE : **5000'**

BELGOROD, RUSSIA
BELGOROD
RWY 29



TOWER **118.200**

Feet (QNH)	Metres (QNH)
5000	1524
2500	762

BEARINGS AND TRACKS ARE MAGNETIC
ALTITUDES AND ELEVATIONS IN **FEET**
DISTANCES IN KILOMETRES

Alt set: -QNH(QFE on req);
-hPa(mm on req).

AIRAC AMDT 13/20

Federal Air Transport Agency

CHANGE: New chart