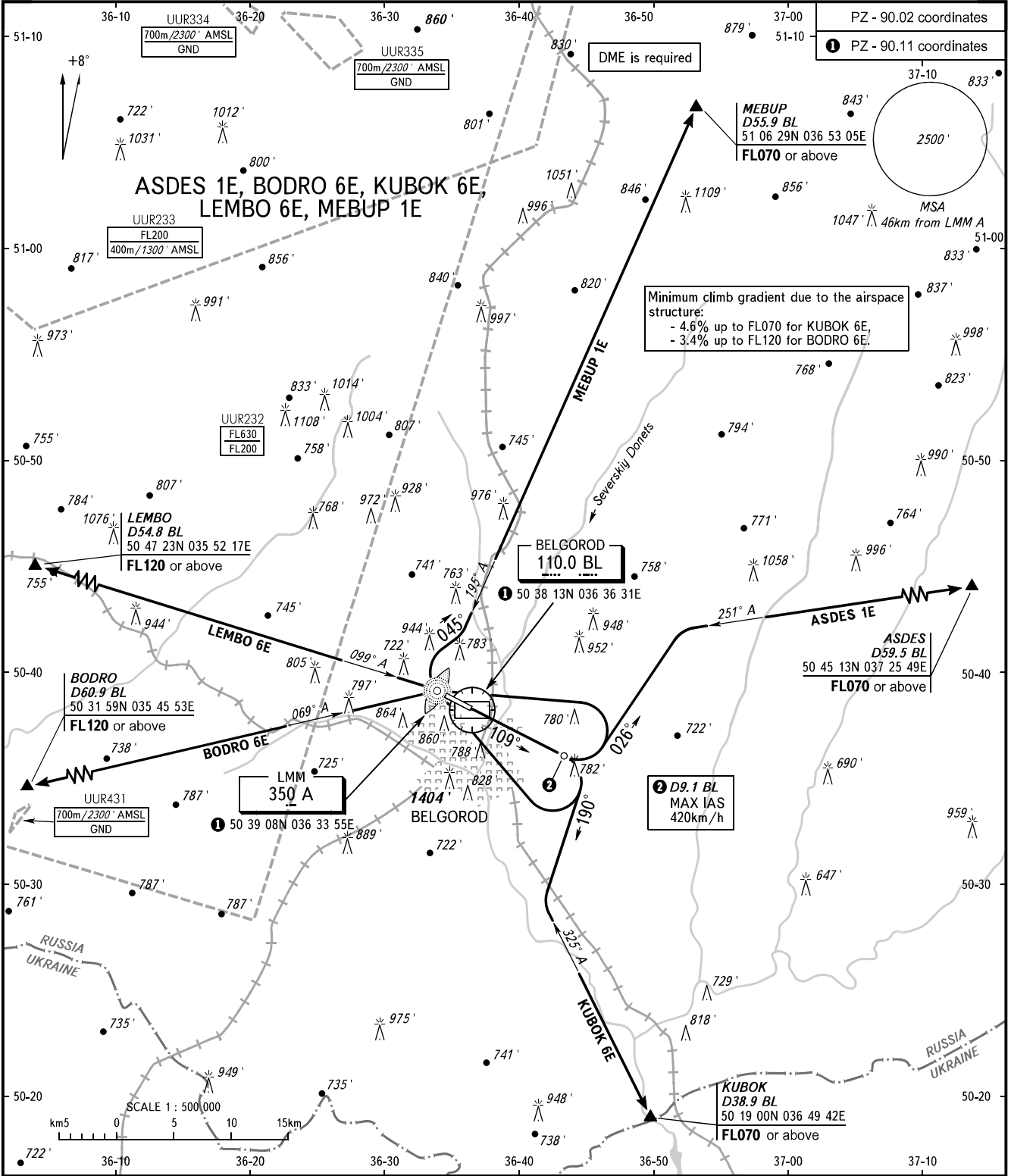


STANDARD DEPARTURE CHART
INSTRUMENT (SID) - ICAO

TRANSITION
ALTITUDE : 5000'

BELGOROD, RUSSIA
BELGOROD
RWY 11



PZ - 90.02 coordinates
PZ - 90.11 coordinates

Minimum climb gradient due to the airspace structure:
- 4.6% up to FL070 for KUBOK 6E,
- 3.4% up to FL120 for BODRO 6E.

D9.1 BL
MAX IAS
420km/h

TOWER 118.200

BEARINGS AND TRACKS ARE MAGNETIC
ALTITUDES AND ELEVATIONS IN FEET
DISTANCES IN KILOMETRES

Alt set: -QNH(QFE on req);
-hPa(mm on req).

CHANGE: New chart