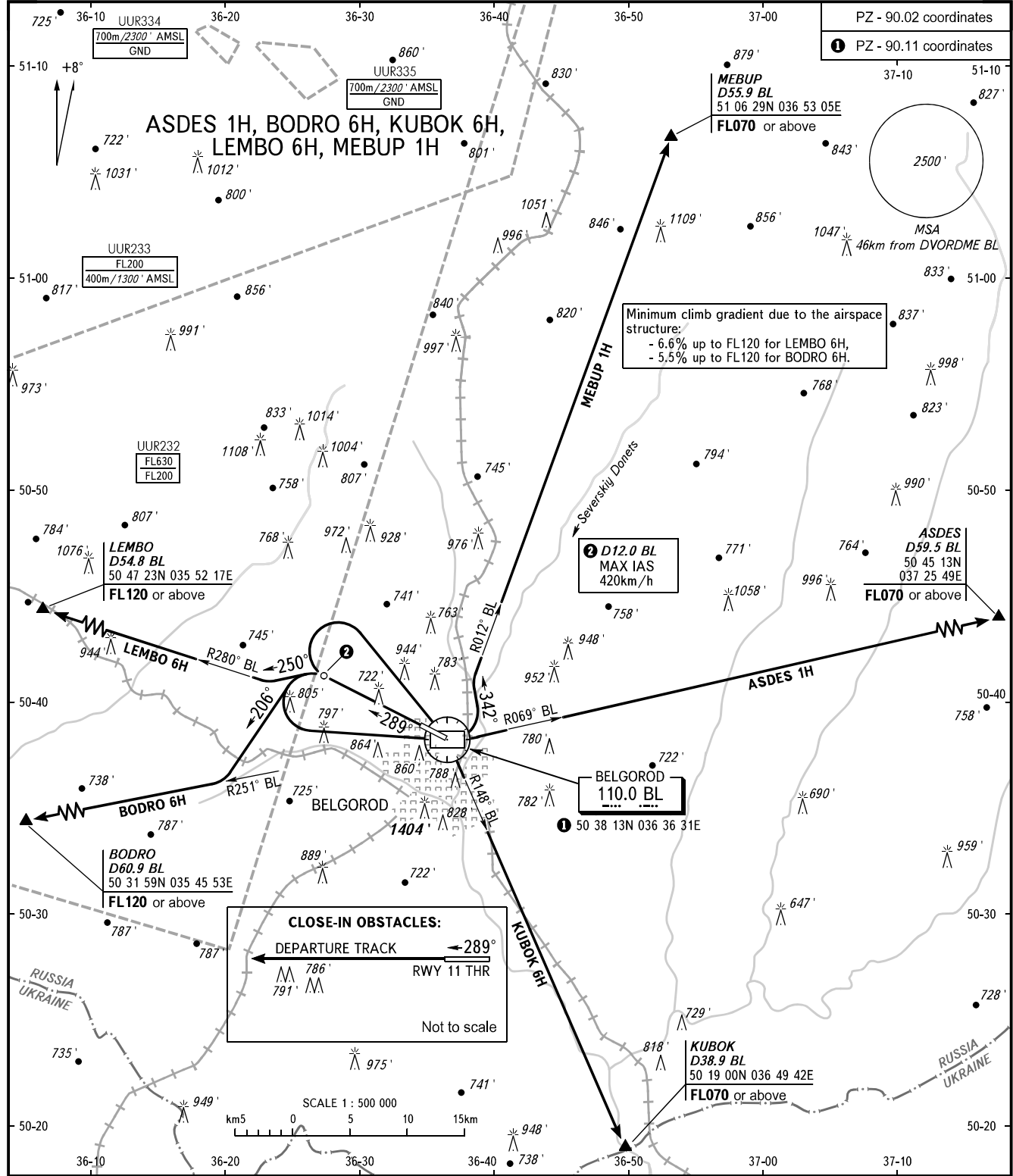


STANDARD DEPARTURE CHART
INSTRUMENT (SID) - ICAO

TRANSITION
ALTITUDE : 5000'

BELGOROD, RUSSIA
BELGOROD
RWY 29



PZ - 90.02 coordinates
① PZ - 90.11 coordinates

Minimum climb gradient due to the airspace structure:
- 6.6% up to FL120 for LEMBO 6H,
- 5.5% up to FL120 for BODRO 6H.

② D12.0 BL
MAX IAS
420km/h

BELGOROD
110.0 BL
① 50 38 13N 036 36 31E

CLOSE-IN OBSTACLES:
DEPARTURE TRACK ← 289°
RWY 11 THR
786'
791'
Not to scale

SCALE 1 : 500 000
0 5 10 15 km

TOWER 118.200

BEARINGS AND TRACKS ARE MAGNETIC
ALTITUDES AND ELEVATIONS IN FEET
DISTANCES IN KILOMETRES
Alt set: -QNH(QFE on req);
-hPa(mm on req).

CHANGE: New chart