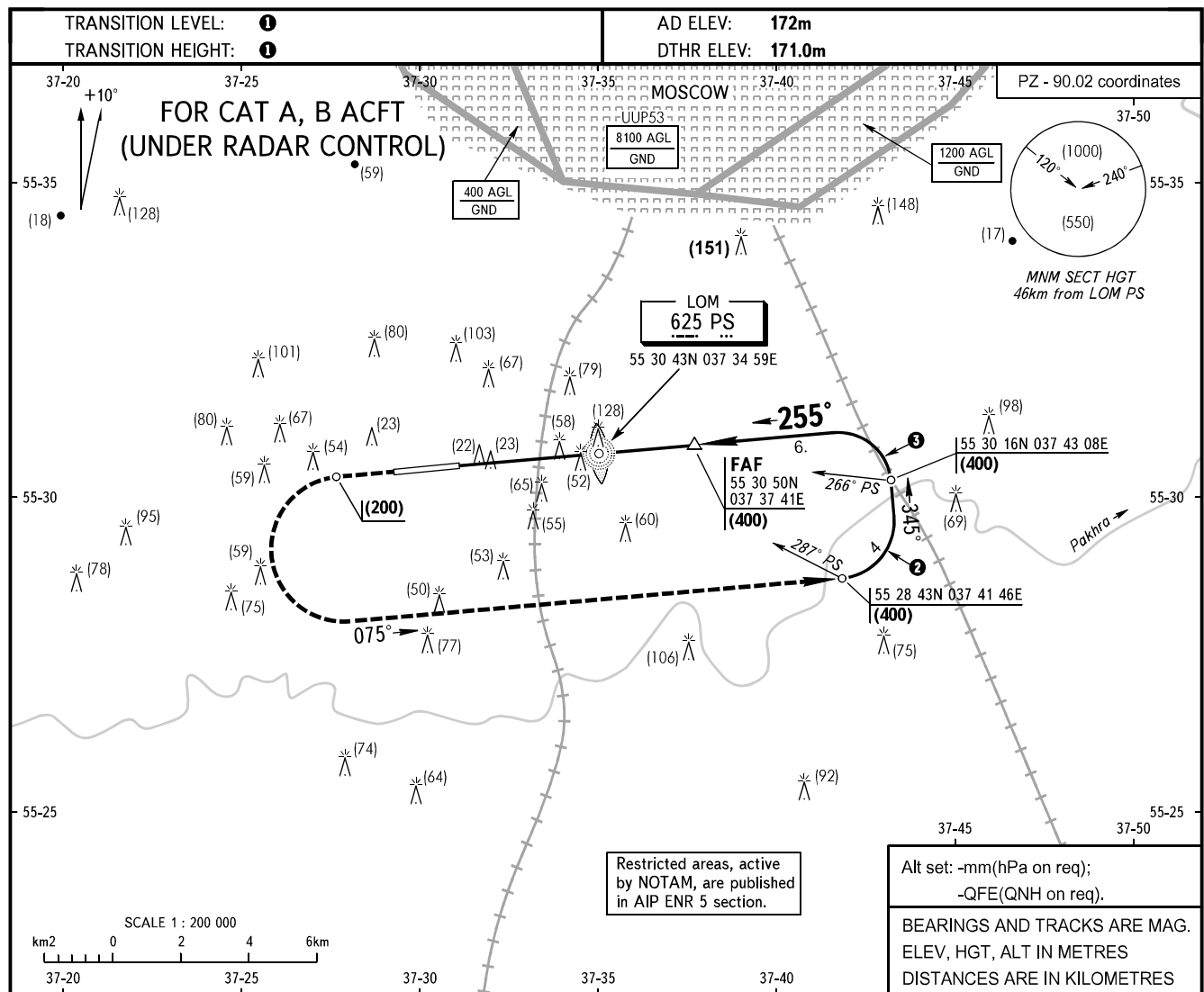


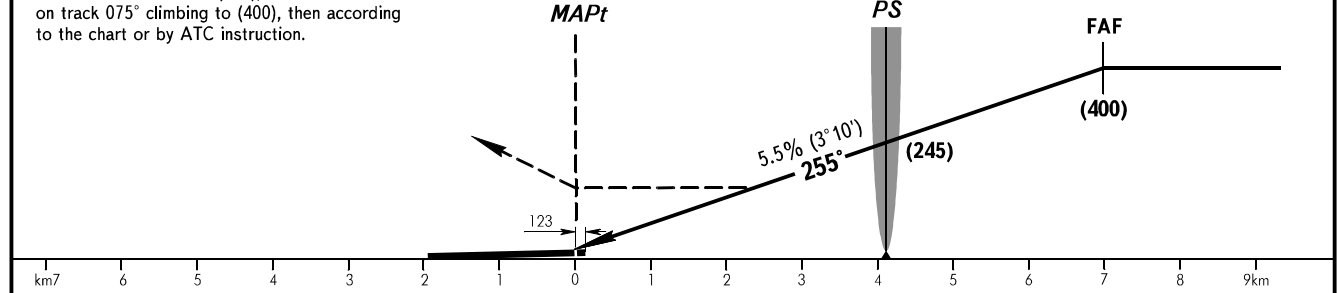
**INSTRUMENT
APPROACH
CHART - ICAO**

OSTAFYEVO TOWER **119.200**

OSTAFYEVO, RUSSIA
OSTAFYEVO
NDB RWY 26



MISSED APPROACH
Climb on track 255° to (200), then turn LEFT on track 075° climbing to (400), then according to the chart or by ATC instruction.



OCA/H		A	B	C	D				
Straight-in Approach	NDB	312(140)	312(140)						
	With FAF	312(140)	312(140)						
	WO FAF	312(140)	312(140)						
GROUND SPEED		km/h	150	180	210	240	270	300	330
LOM - MAPt 4110m		min:sec	1:39	1:22	1:10	1:02	0:55	0:49	0:45
RATE OF DESCENT		m/s	2.3	2.8	3.2	3.7	4.1	4.6	5.0

- ❶ By ATC (ATIS) of VNUKOVO or DOMODEDOVO AD.
- ❷ MAX IAS 300km/h
- ❸ MAX IAS 280km/h

CHANGE: DTHR ELEV