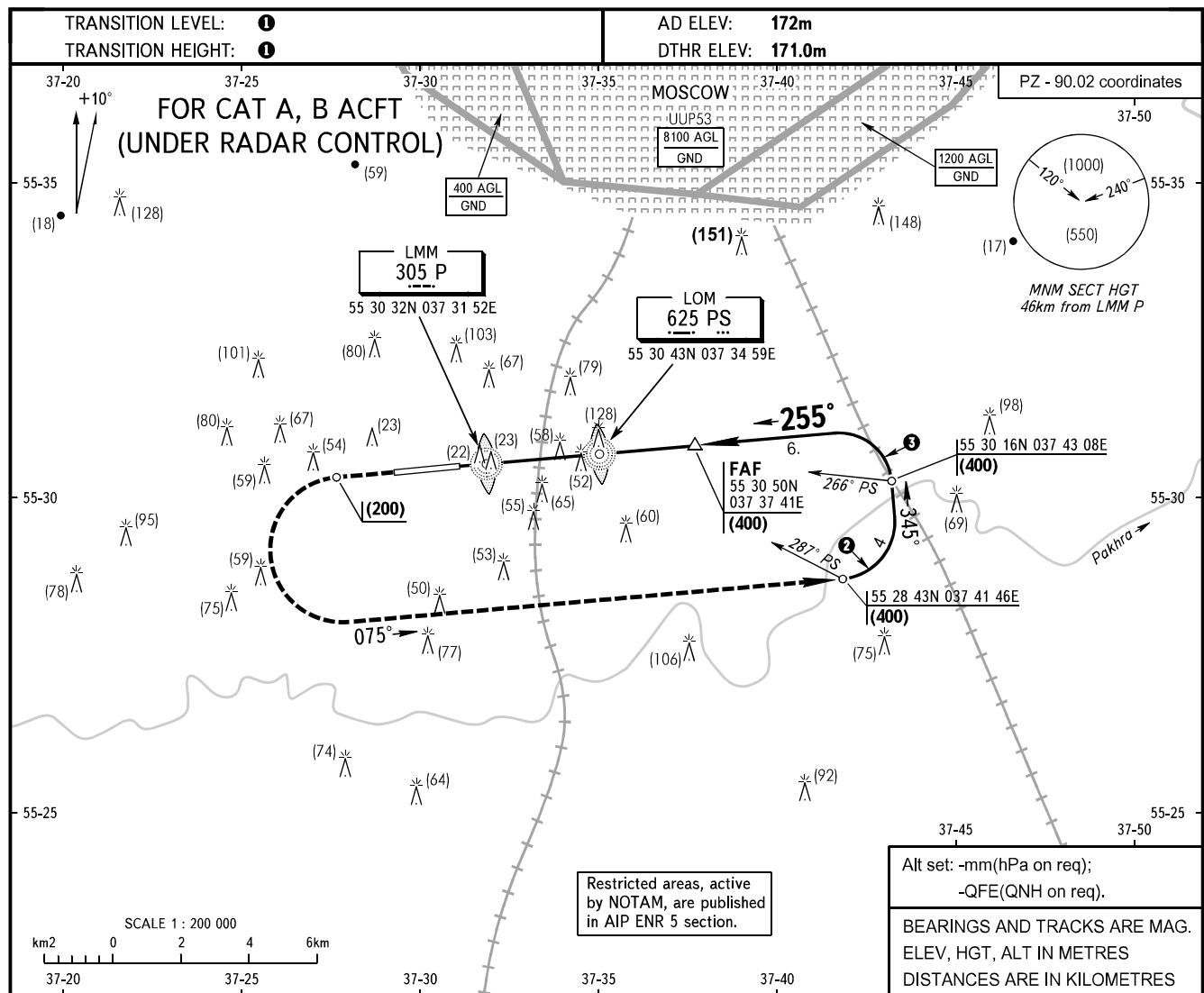


INSTRUMENT
APPROACH
CHART - ICAO

OSTAFYEVO TOWER 119.200

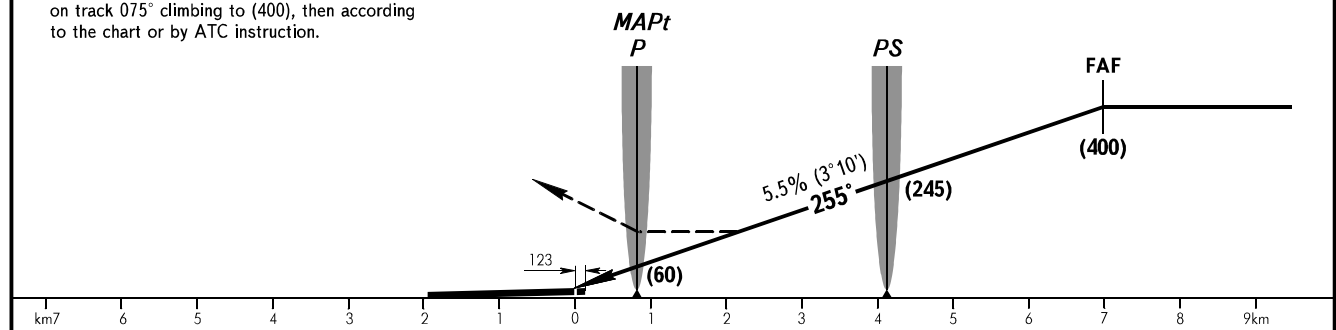
OSTAFYEVO, RUSSIA
OSTAFYEVO
2 NDB, NDB RWY 26



MISSED APPROACH

Climb on track 255° to (200), then turn LEFT on track 075° climbing to (400), then according to the chart or by ATC instruction.

FAF is fixed by TAR



OCA(H)		A	B	C	D				
Straight-in	2 NDB	With FAF	306(134)	306(134)					
		WO FAF	422(250)	422(250)					
Approach	NDB (LMM)	With FAF	330(158)	330(158)					
		WO FAF	358(186)	358(186)					
GROUND SPEED		km/h	150	180	210	240	270	300	330
RATE OF DESCENT		m/s	2.3	2.8	3.2	3.7	4.1	4.6	5.0

- ① By ATC (ATIS) of VNUKOVO or DOMODEDOVO AD.
- ② MAX IAS 300km/h
- ③ MAX IAS 280km/h