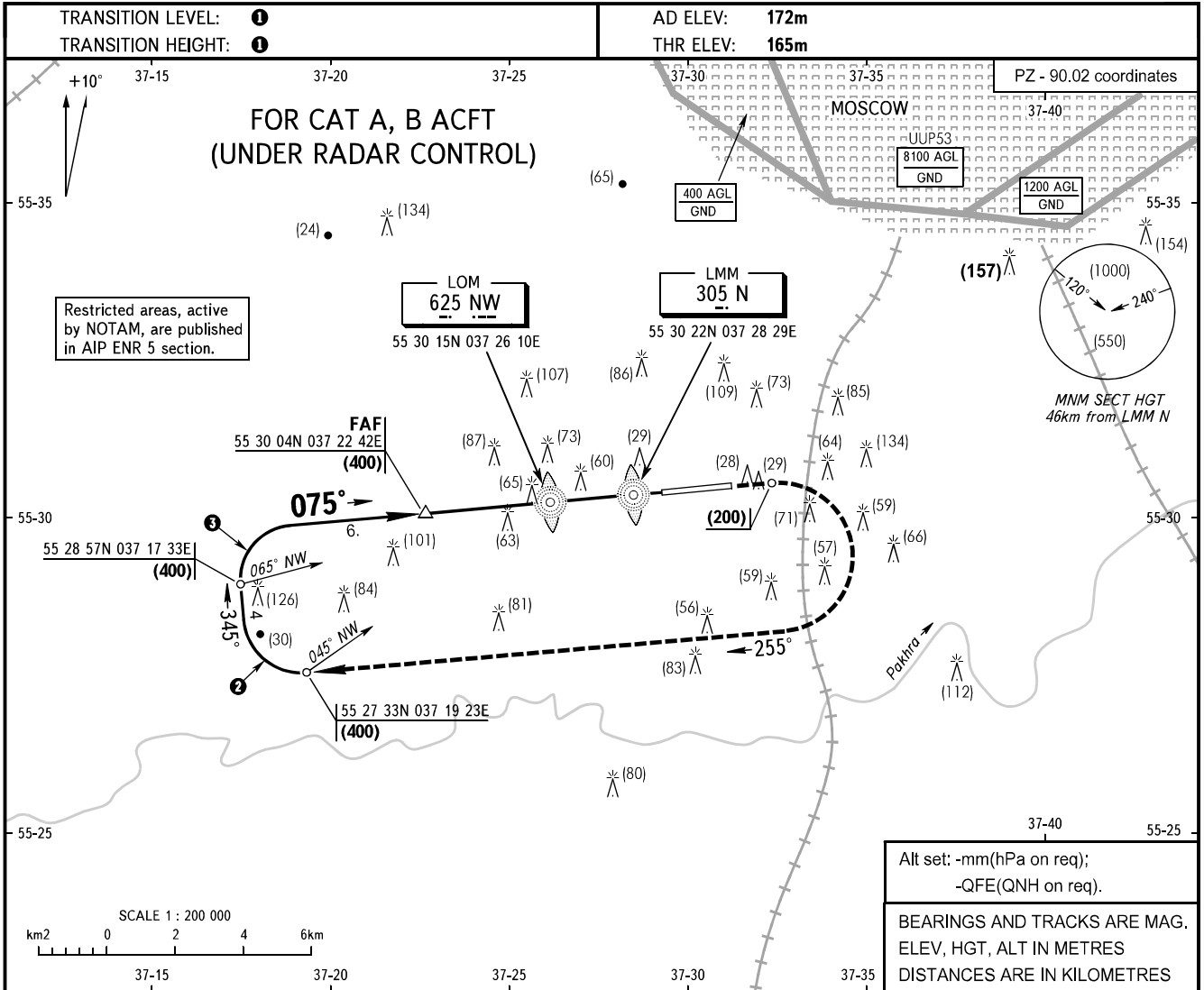


**INSTRUMENT
APPROACH
CHART - ICAO**

OSTAFYEVO TOWER **119.200**

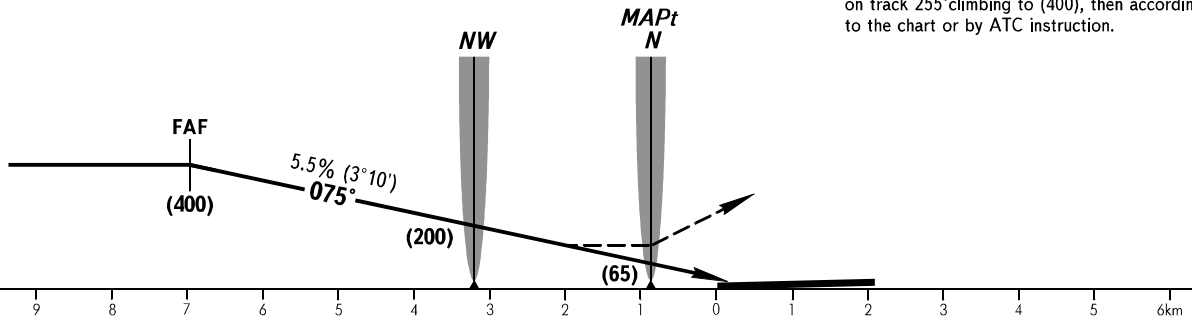
OSTAFYEVO, RUSSIA
OSTAFYEVO
2 NDB, NDB RWY 08



FAF is fixed by TAR

MISSED APPROACH

Climb on track 075° to (200), then turn RIGHT on track 255° climbing to (400), then according to the chart or by ATC instruction.



OCA(H)		A	B	C	D				
Straight-in Approach	2 NDB	With FAF	272(107)	272(107)					
		WO FAF	441(276)	441(276)					
	NDB (LMM)	With FAF	301(136)	301(136)					
		WO FAF	379(214)	379(214)					
GROUND SPEED		km/h	150	180	210	240	270	300	330
RATE OF DESCENT		m/s	2.3	2.8	3.2	3.7	4.1	4.6	5.0

- ① By ATC (ATIS) of VNUKOVO or DOMODEDOVO AD.
- ② MAX IAS 300km/h
- ③ MAX IAS 280km/h

CHANGE: NIL