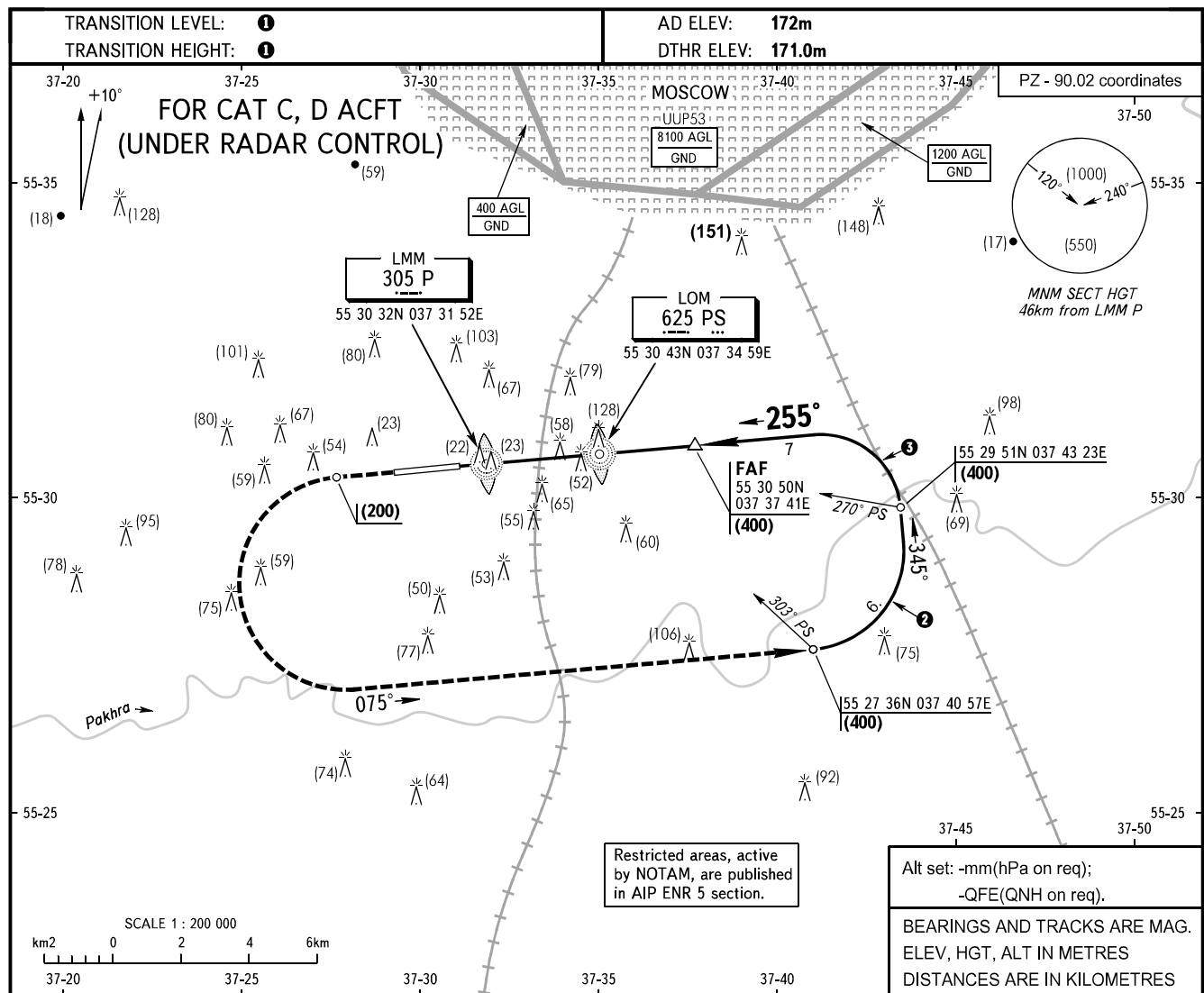


**INSTRUMENT  
APPROACH  
CHART - ICAO**

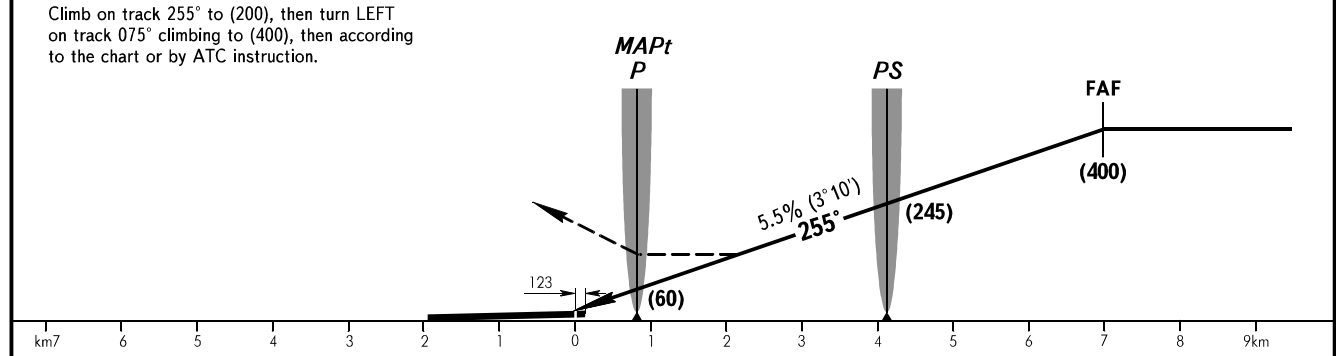
OSTAFYEVO TOWER **119.200**

**OSTAFYEVO, RUSSIA**  
OSTAFYEVO  
**2 NDB, NDB RWY 26**



**MISSED APPROACH**  
Climb on track 255° to (200), then turn LEFT on track 075° climbing to (400), then according to the chart or by ATC instruction.

FAF is fixed by TAR



OCA(H)		A	B	C	D							
Straight-in Approach	2 NDB	With FAF		306(134)	306(134)							
		WO FAF		422(250)	422(250)							
	NDB (LMM)	With FAF		330(158)	330(158)							
		WO FAF		358(186)	358(186)							
<p>① By ATC (ATIS) of VNUKOVO or DOMODEDOVO AD. ② MAX IAS 380km/h ③ MAX IAS 360km/h</p>												
GROUND SPEED		km/h	150	180	210	240	270	300	330	360	390	420
RATE OF DESCENT		m/s	2.3	2.8	3.2	3.7	4.1	4.6	5.0	5.5	6.0	6.4