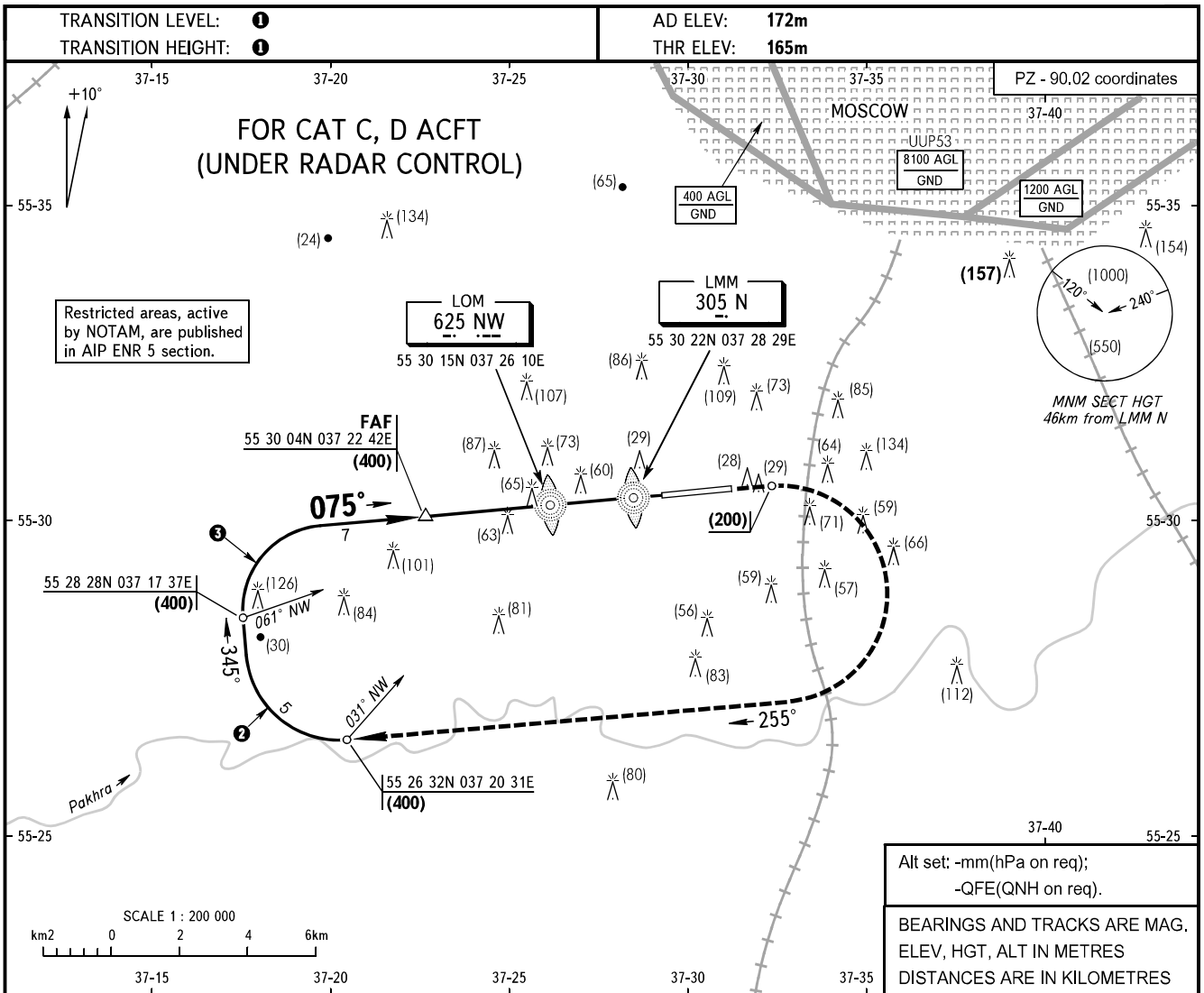


**INSTRUMENT  
APPROACH  
CHART - ICAO**

OSTAFYEVO TOWER **119.200**

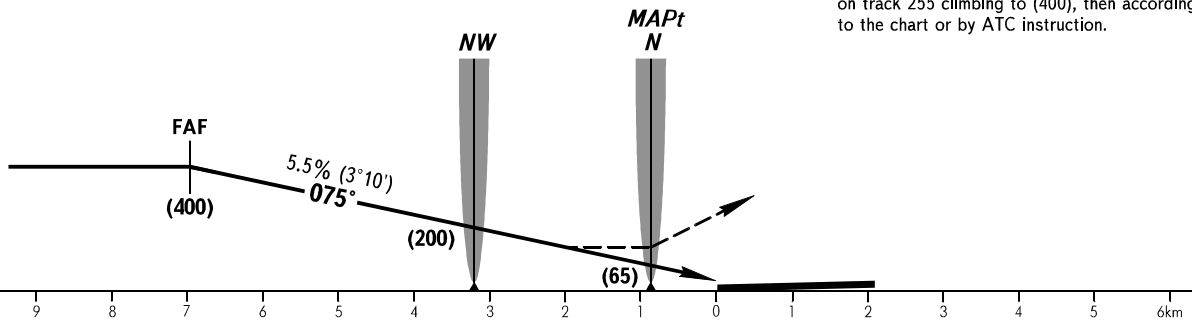
**OSTAFYEVO, RUSSIA**  
OSTAFYEVO  
2 NDB, NDB RWY 08



FAF is fixed by TAR

**MISSED APPROACH**

Climb on track 075° to (200), then turn RIGHT on track 255° climbing to (400), then according to the chart or by ATC instruction.



		OCA(H)										
		A	B	C	D							
Straight-in Approach	2 NDB	With FAF		272(107)	272(107)							
		WO FAF		441(276)	441(276)							
	NDB (LMM)	With FAF		301(136)	301(136)							
		WO FAF		379(214)	379(214)							
GROUND SPEED		km/h	150	180	210	240	270	300	330	360	390	420
RATE OF DESCENT		m/s	2.3	2.8	3.2	3.7	4.1	4.6	5.0	5.5	6.0	6.4

- 1** By ATC (ATIS) of VNUKOVO or DOMODEDOVO AD.
- 2** MAX IAS 380km/h
- 3** MAX IAS 360km/h

CHANGE: NIL