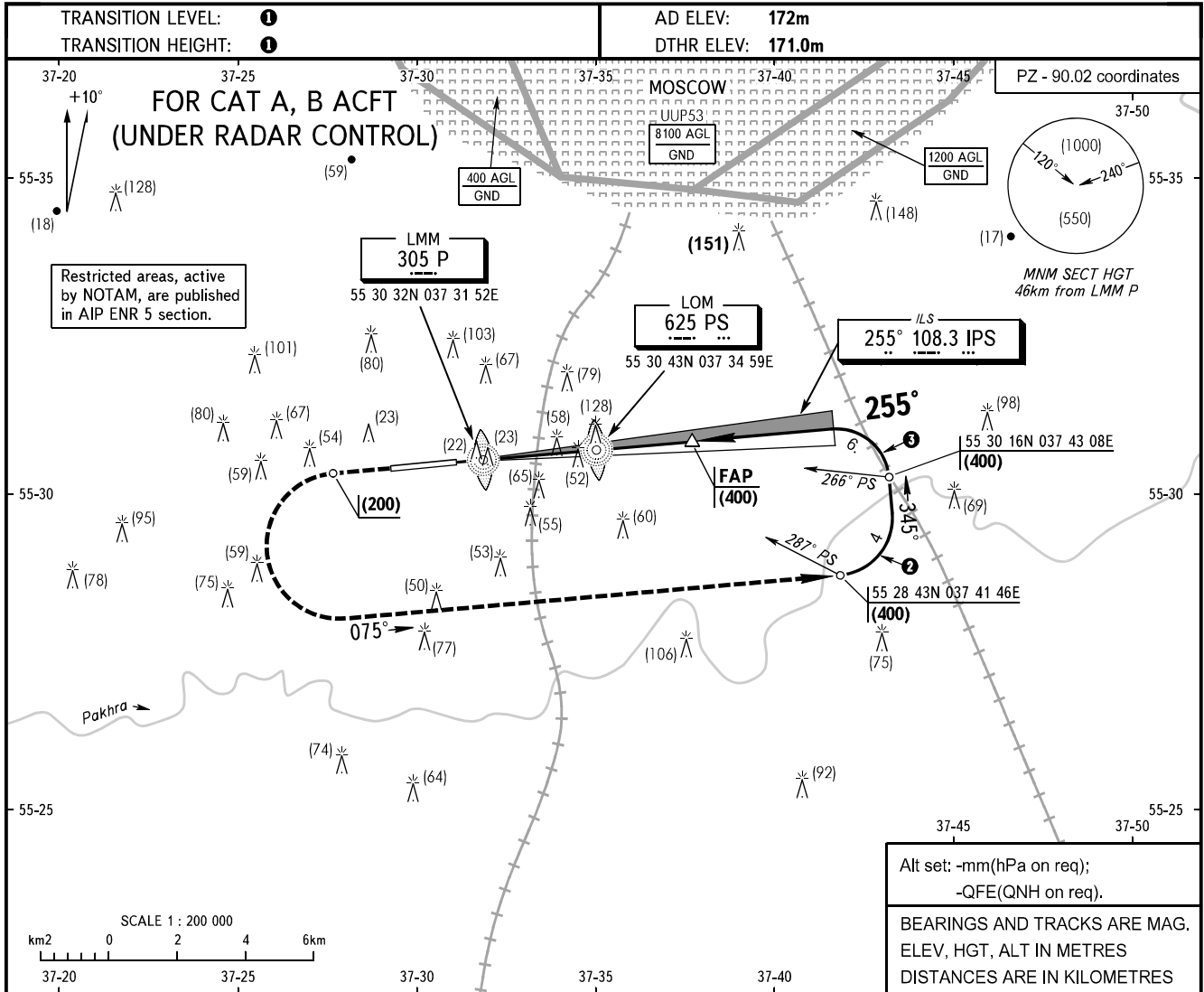


**INSTRUMENT
APPROACH
CHART - ICAO**

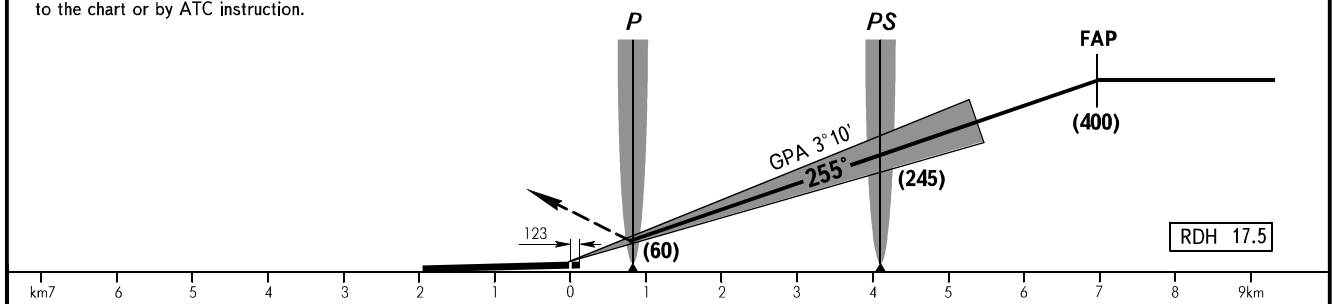
OSTAFYEVO TOWER **119.200**

OSTAFYEVO, RUSSIA
OSTAFYEVO
ILS RWY 26 CAT I



MISSED APPROACH

Climb on track 255° to (200), then turn LEFT on track 075° climbing to (400), then according to the chart or by ATC instruction.



OCA(H)		A	B	C	D
Straight-in	CAT I	216(44)	218(46)		
	Approach				

- ① By ATC (ATIS) of VNUKOVO or DOMODEDOVO AD.
- ② MAX IAS 300km/h
- ③ MAX IAS 280km/h

GROUND SPEED	km/h	150	180	210	240	270	300	330
RATE OF DESCENT	m/s	2.3	2.8	3.2	3.7	4.1	4.6	5.0

CHANGE: OCA(H)