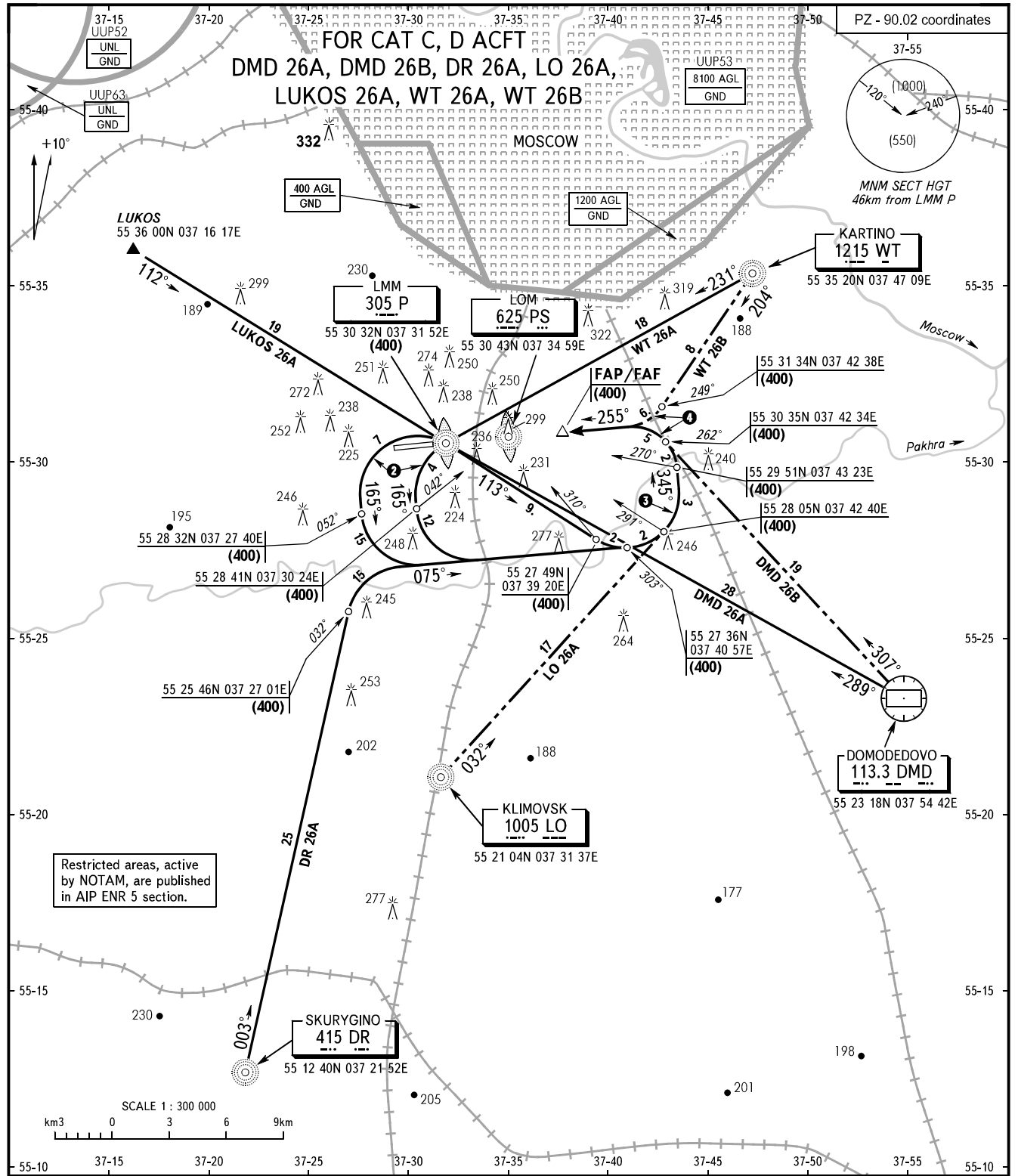


STANDARD ARRIVAL CHART
INSTRUMENT (STAR) - ICAO

TRANSITION
LEVEL : 1

OSTAFYEVO, RUSSIA
OSTAFYEVO
RWY 26



MOSCOW	APPROACH	See UUMO-56	1 By ATC (ATIS) of VNUKOVO or DOMODEDOVO AD.
DOMODEDOVO	RADAR	127.700	2 IAS MAX 400km/h
VNUKOVO	RADAR	126.000	3 IAS MAX 380km/h
OSTAFYEVO	TOWER	119.200	4 IAS MAX 360km/h

WARNING
Approach-to-land shall be carried out under radar control and ATC direction only.

BEARINGS AND TRACKS ARE MAGNETIC
ALTITUDES, HEIGHTS AND ELEVATIONS ARE IN METRES
DISTANCES ARE IN KILOMETRES

CHANGE: New chart