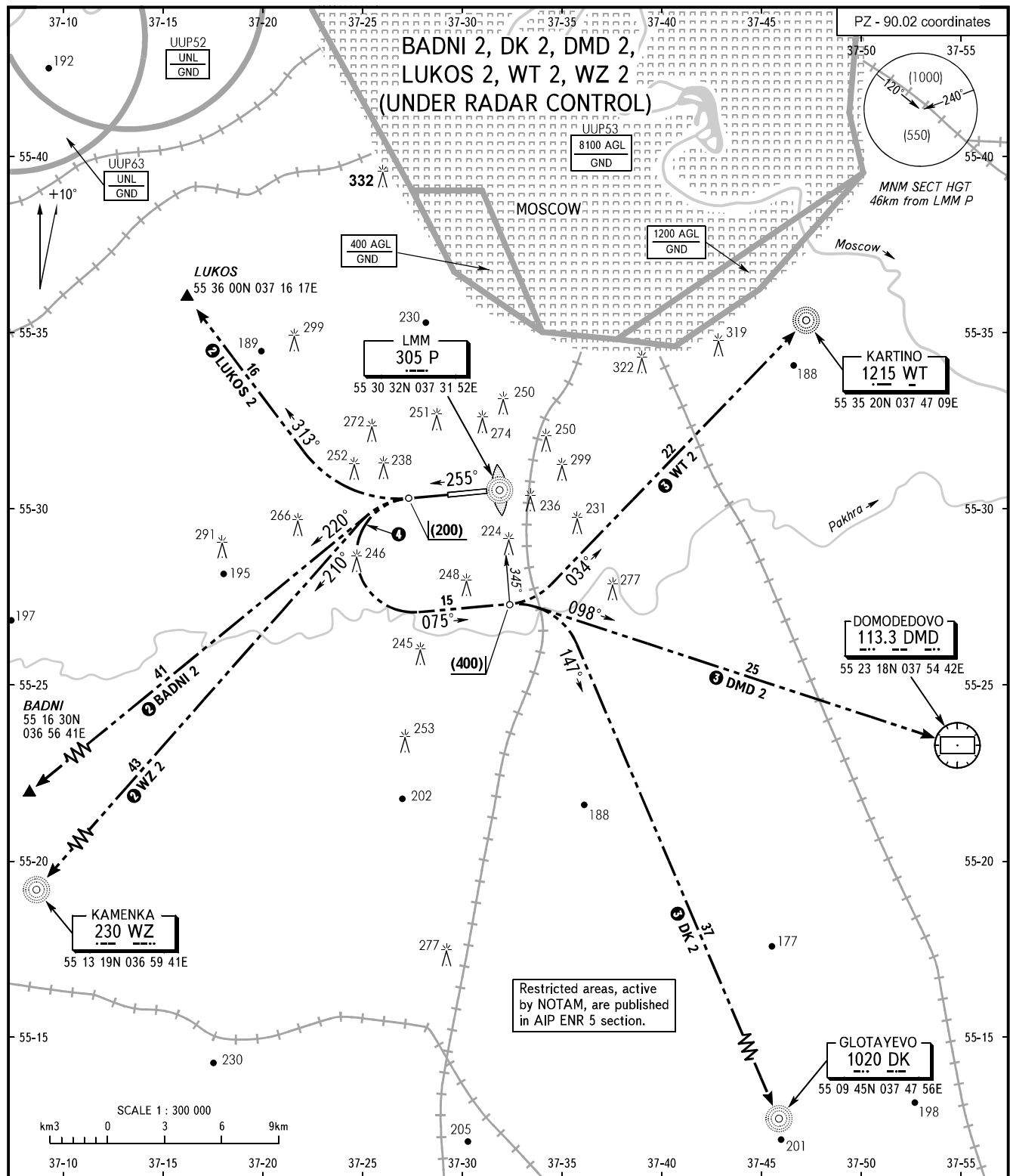


STANDARD DEPARTURE CHART
INSTRUMENT (SID) - ICAO

TRANSITION
HEIGHT: 1

OSTAFYEVO, RUSSIA
OSTAFYEVO
RWY 26



OSTAFYEVO	TOWER	119.200
DOMODEDOVO	RADAR	127.700
VNUKOVO	RADAR	126.000
MOSCOW	APPROACH	See UUMO-55

- 1 By ATC (ATIS) of VNUKOVO or DOMODEDOVO AD.
- 2 DEP under Vnuково-Radar direction
- 3 DEP under Domodedovo-Radar direction
- 4 IAS MAX 360km/h, radius 3.0km

WARNING
Turns before DER are prohibited.

BEARINGS AND TRACKS ARE MAGNETIC
ALTITUDES, HEIGHTS AND ELEVATIONS ARE IN METRES
DISTANCES ARE IN KILOMETRES

CHANGE: New chart