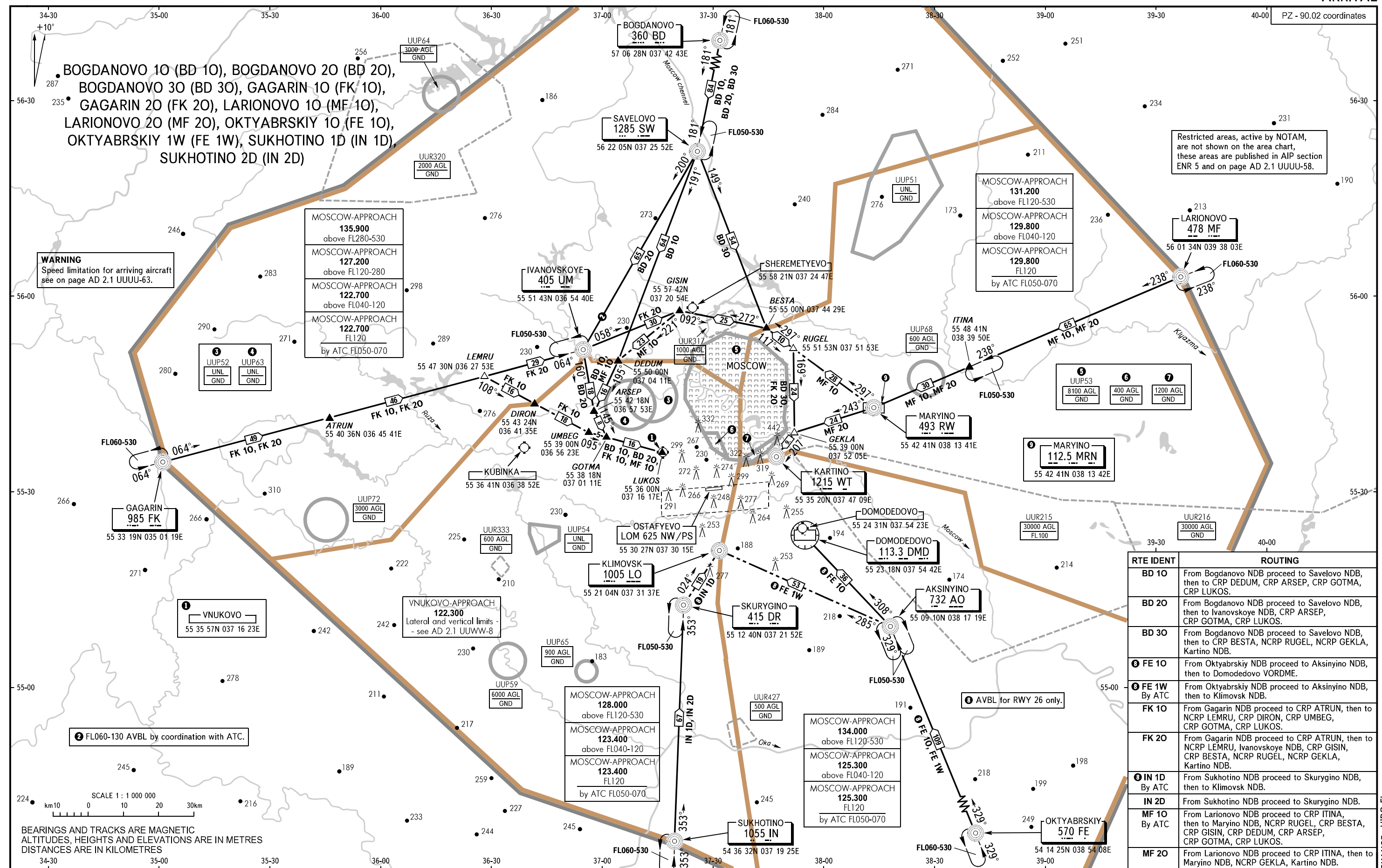


OSTAFYEVO, RUSSIA
OSTAFYEVO
ARRIVAL

AREA CHART - ICAO

ARRIVAL ROUTES



BOGDANOVO 10 (BD 10), BOGDANOVO 20 (BD 20),
BOGDANOVO 30 (BD 30), GAGARIN 10 (FK 10),
GAGARIN 20 (FK 20), LARIONOVO 10 (MF 10),
LARIONOVO 20 (MF 20), OKTYABRSKIY 10 (FE 10),
OKTYABRSKIY 1W (FE 1W), SUKHOTINO 1D (IN 1D),
SUKHOTINO 2D (IN 2D)

WARNING
Speed limitation for arriving aircraft
see on page AD 2.1 UUUU-63.

MOSCOW-APPROACH
135.900
above FL280-530
MOSCOW-APPROACH
127.200
above FL120-280
MOSCOW-APPROACH
122.700
above FL040-120
MOSCOW-APPROACH
122.700
FL120
by ATC FL050-070

MOSCOW-APPROACH
131.200
above FL120-530
MOSCOW-APPROACH
129.800
above FL040-120
MOSCOW-APPROACH
129.800
FL120
by ATC FL050-070

Restricted areas, active by NOTAM,
are not shown on the area chart,
these areas are published in AIP section
ENR 5 and on page AD 2.1 UUUU-58.

RTE IDENT	ROUTING
BD 10	From Bogdanovo NDB proceed to Savelovo NDB, then to CRP DEDUM, CRP ARSEP, CRP LUKOS.
BD 20	From Bogdanovo NDB proceed to Savelovo NDB, then to Ivanovskoye NDB, CRP ARSEP, CRP GOTMA, CRP LUKOS.
BD 30	From Bogdanovo NDB proceed to Savelovo NDB, then to CRP BESTA, NCRP RUGEL, NCRP GEKLA, Kartino NDB.
FE 10	From Oktyabrskiy NDB proceed to Aksinyino NDB, then to Domodedovo VORDME.
FE 1W By ATC	From Oktyabrskiy NDB proceed to Aksinyino NDB, then to Klimovsk NDB.
FK 10	From Gagarin NDB proceed to CRP ATRUN, then to NCRP LEMRU, CRP DIRON, CRP UMBEG, CRP GOTMA, CRP LUKOS.
FK 20	From Gagarin NDB proceed to CRP ATRUN, then to NCRP LEMRU, Ivanovskoye NDB, CRP GISIN, CRP BESTA, NCRP RUGEL, NCRP GEKLA, Kartino NDB.
IN 1D By ATC	From Sukhotino NDB proceed to Skurygino NDB, then to Klimovsk NDB.
IN 2D	From Sukhotino NDB proceed to Skurygino NDB.
MF 10 By ATC	From Larionovo NDB proceed to CRP ITINA, then to Maryino NDB, NCRP RUGEL, CRP BESTA, CRP GISIN, CRP DEDUM, CRP ARSEP, CRP GOTMA, CRP LUKOS.
MF 20	From Larionovo NDB proceed to CRP ITINA, then to Maryino NDB, NCRP GEKLA, Kartino NDB.

CHANGE: HIGD FL