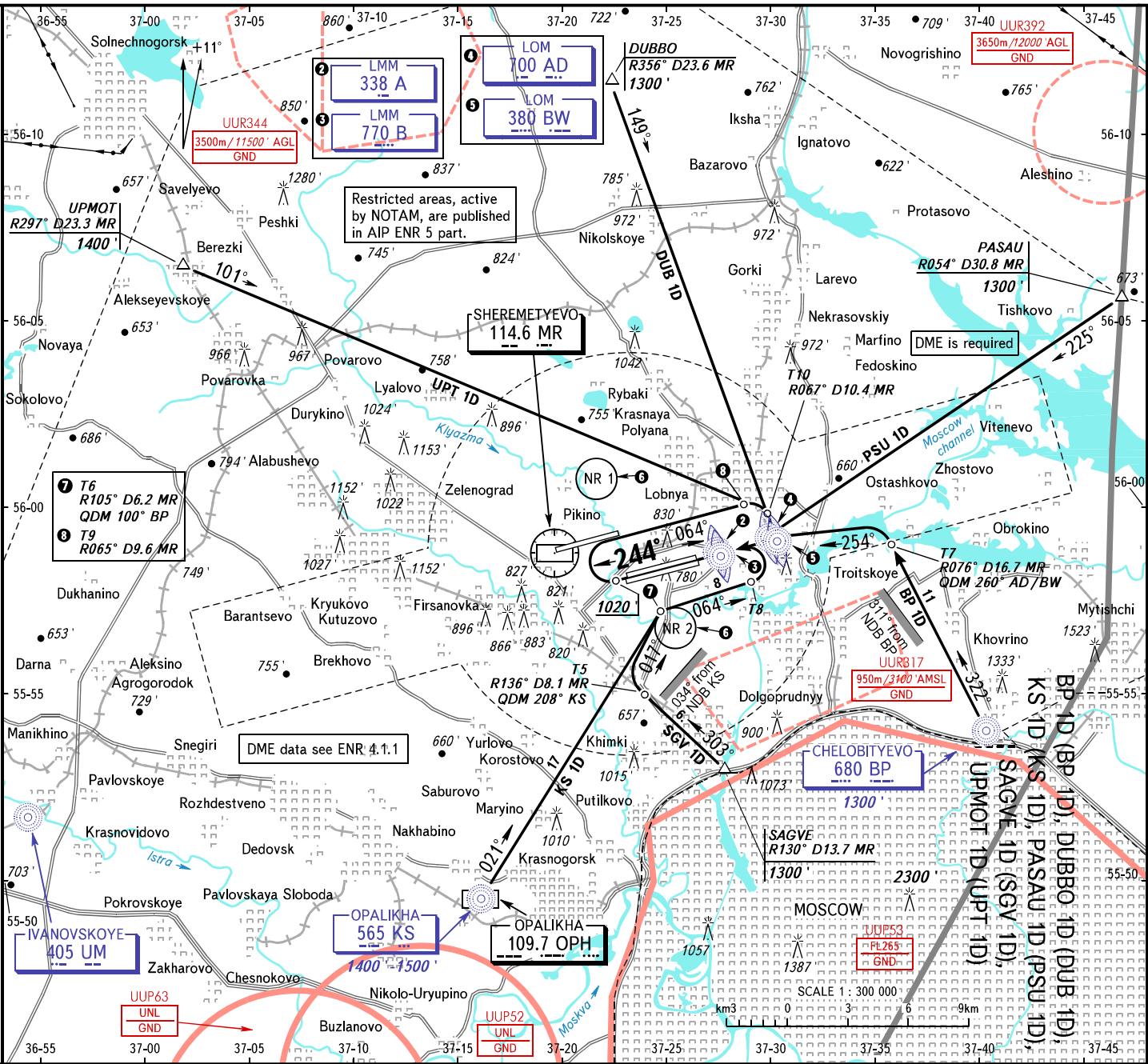


VFR
ARRIVAL
CHART

MOSCOW, RUSSIA
SHEREMETYEVO
RWY 24C, 24L

TRANSITION LEVEL: By ATC **9**
TRANSITION ALTITUDE: 10000'

AD ELEV: 630'



SHEREMETYEVO TOWER
SHEREMETYEVO ARRIVAL

118.700 120.700 131.500 119.300 **1**
118.100 122.700 126.600 135.900 **1**

WARNING
MAX IAS for ACFT executing VFR flights
shall not exceed 450km/h below FL100.

1 Lateral and vertical limits see UJEE AD 2.18.

9 Holding areas see UJEE AD 2.22.

3 - FL110 when QNH is 1013 hPa (760mm mercury column) or above;
2 - FL120 when QNH is 977 hPa (733mm mercury column) or above,
but less than 1013 hPa (760mm mercury column);

1 - FL130 when QNH is less than 977 hPa (733mm mercury column).

Restricted areas, active
by NOTAM, are published
in AIP ENR 5 part.

DME data see ENR 4.1.1

BEARINGS AND TRACKS ARE MAGNETIC
ALTITUDES AND ELEVATIONS IN FEET
DISTANCES IN KILOMETRES

All set: QNH/QFE on req);
-hPa(mm on req).