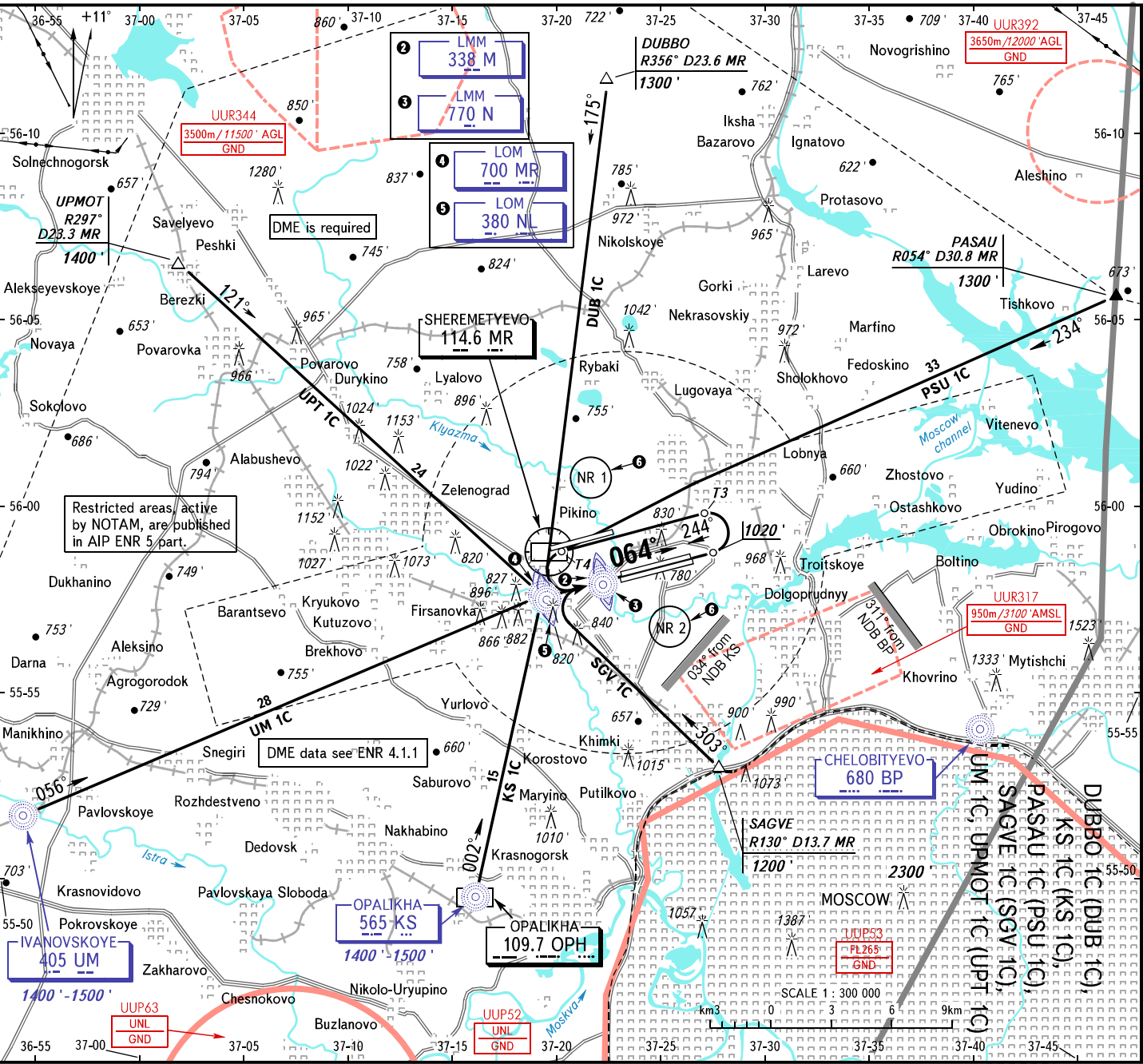


VFR  
ARRIVAL  
CHART

MOSCOW, RUSSIA  
SHEREMETYEVO  
RWY 06C, 06R

TRANSITION LEVEL: By ATC  
TRANSITION ALTITUDE: 10000'

AD ELEV: 630'



Restricted areas, active by NOTAM, are published in AIP ENR 5 part.

SHERMETYEVO TOWER  
SHERMETYEVO ARRIVAL  
118.700 120.700 131.500  
118.100 122.700 126.500 135.900

BEARINGS AND TRACKS ARE MAGNETIC  
ALTITUDES AND ELEVATIONS IN FEET  
DISTANCES IN KILOMETRES

**WARNING**  
MAX IAS for ACFT executing VFR flights shall not exceed 450km/h below FL100.

- 1 Lateral and vertical limits see UUEE AD 2.18.
- 2 Holding areas see UUEE AD 2.22.
- 3 FL110 when QNH is 1013 hPa (760mm mercury column) or above; FL120 when QNH is 977 hPa (733mm mercury column) or above, but less than 1013 hPa (760mm mercury column); FL130 when QNH is less than 977 hPa (733mm mercury column).