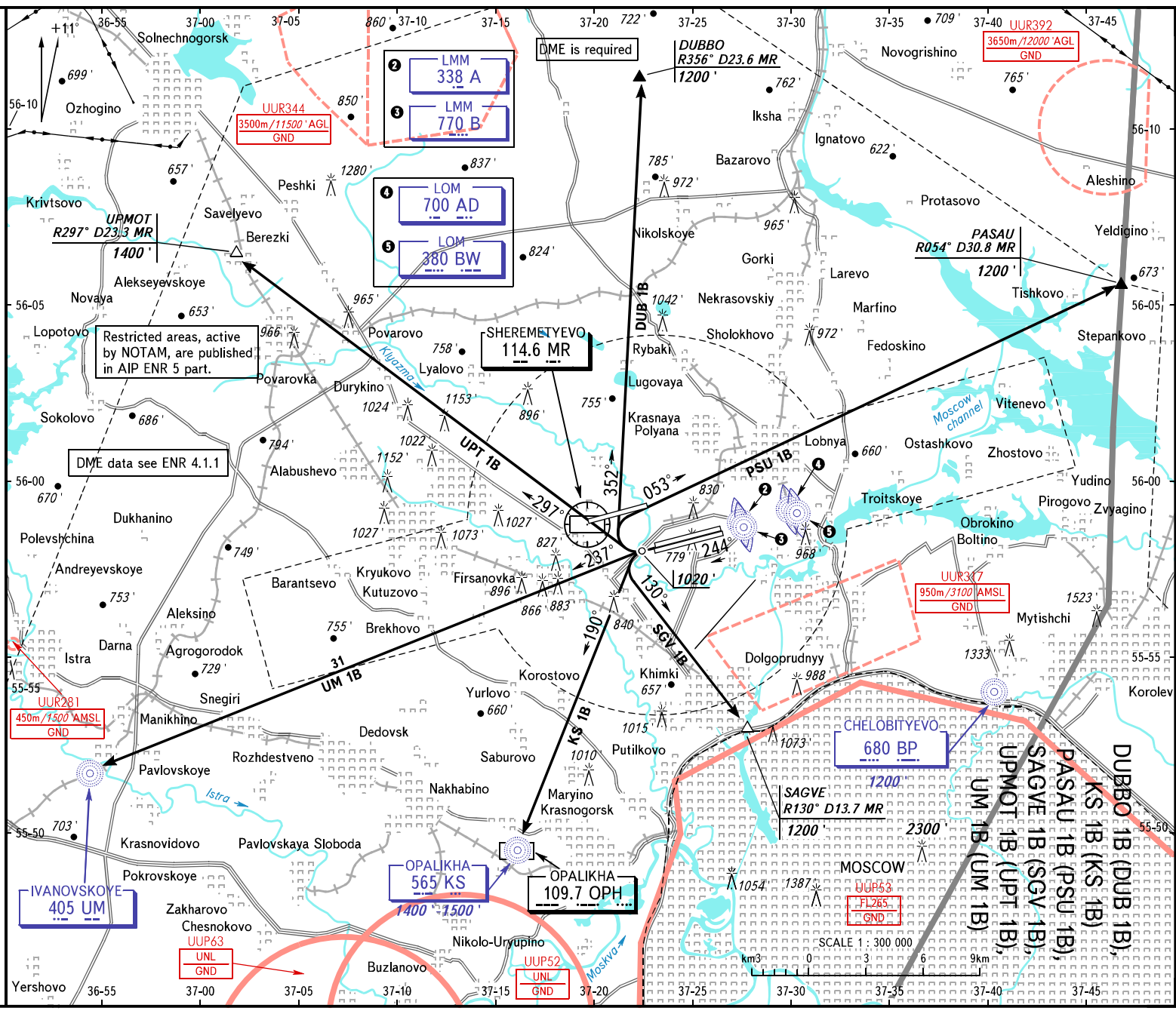


VFR
DEPARTURE
CHART

TRANSITION
ALTITUDE: 10000'

MOSCOW, RUSSIA
SHEREMETYEVO
RWY 24C, 24L



SHEREMETYEVO TOWER
SHEREMETYEVO DEPARTURE
118,700 120,700 131,500

WARNING
MAX IAS for ACFT executing VFR flights shall not exceed 450km/h below FL100.
Lateral and vertical limits see UJEE AD 2.18.

BEARINGS AND TRACKS ARE MAGNETIC
ALTITUDES AND ELEVATIONS IN FEET
DISTANCES IN KILOMETRES

All set: -QNH(QFE on req);
-hPa(mm on req).