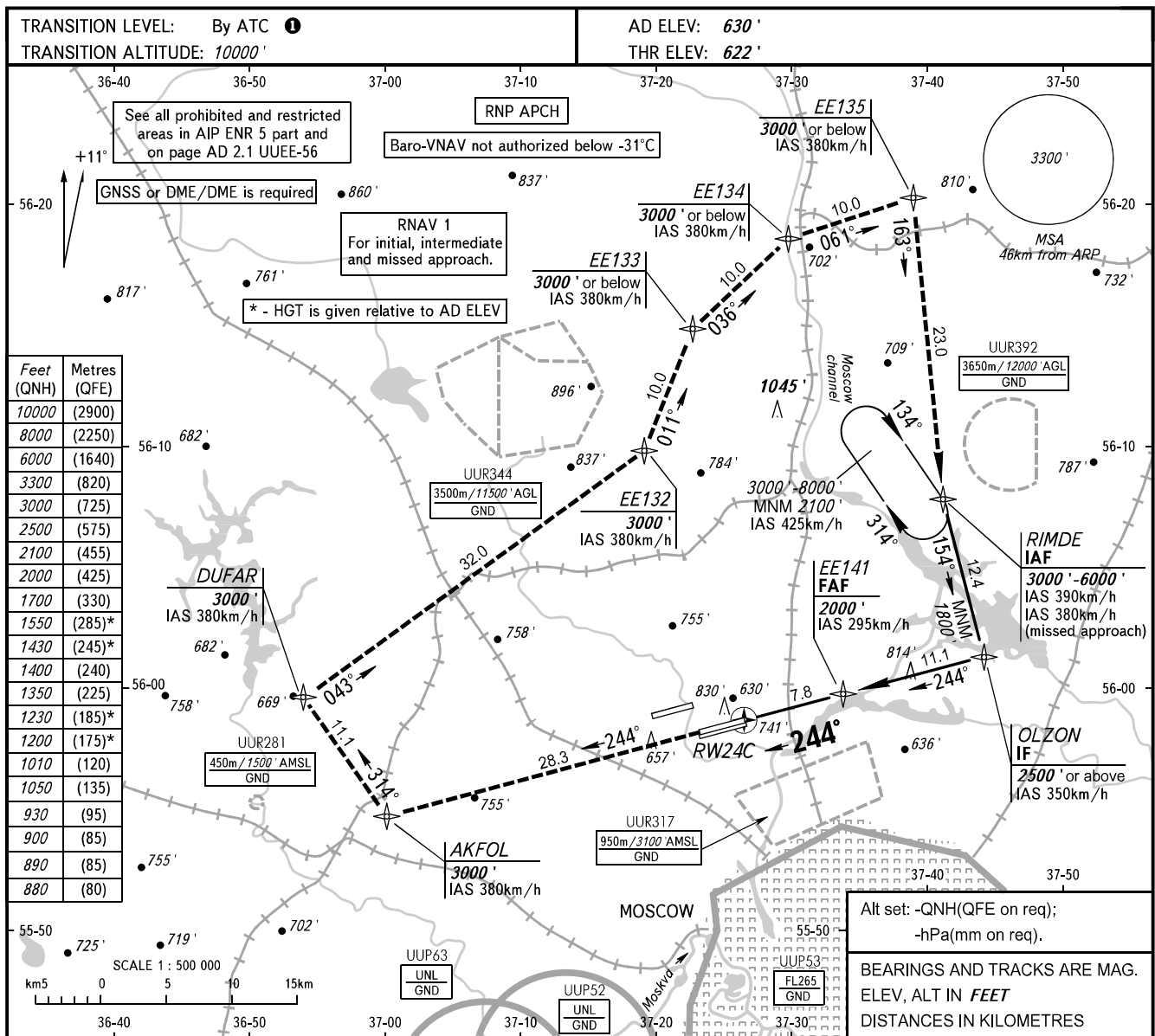


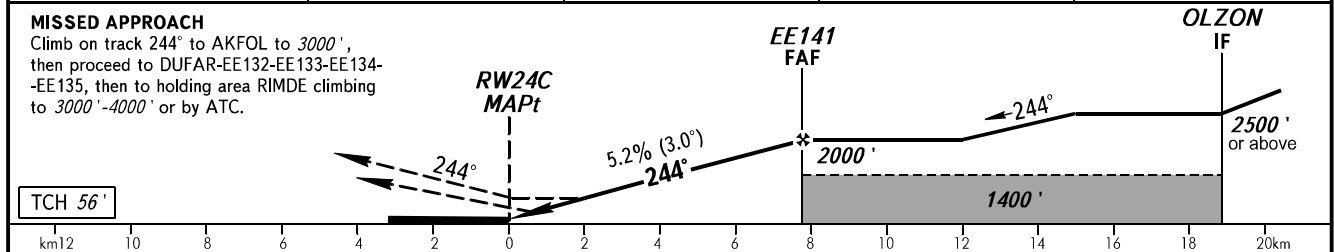
**INSTRUMENT
APPROACH
CHART - ICAO**

SHEREMETYEVO ARRIVAL	122.700	135.900
	118.100	126.600

**MOSCOW, RUSSIA
SHEREMETYEVO
RNP X RWY 24C**



DIST to RW24C	2.0	4.0	6.0	7.8
ALTITUDE	1010'	1350'	1700'	2000'



OCA(H)		A	B	C	D								
Straight-in Approach	MNM climb gradient for missed APCH	1050' (430')	1050' (430')	1050' (430')	1050' (430')								
	LNVA/VNAV	880' (260')	890' (260')	900' (280')	930' (310')								
Circling		1200' (570')	1230' (600')	1430' (800')	1550' (920')								
GROUND SPEED		km/h	150	180	210	240	270	300	330	360	390	420	450
RATE OF DESCENT		m/s	2.2	2.6	3.0	3.5	3.9	4.3	4.8	5.2	5.6	6.1	6.5
		ft/min	427	512	597	682	768	853	938	1024	1109	1195	1280

- ① - FL110 when QNH is 1013 hPa (760mm mercury column) or above;
- FL120 when QNH is 977 hPa (733mm mercury column) or above, but less than 1013 hPa (760mm mercury column);
- FL130 when QNH is less than 977 hPa (733mm mercury column).