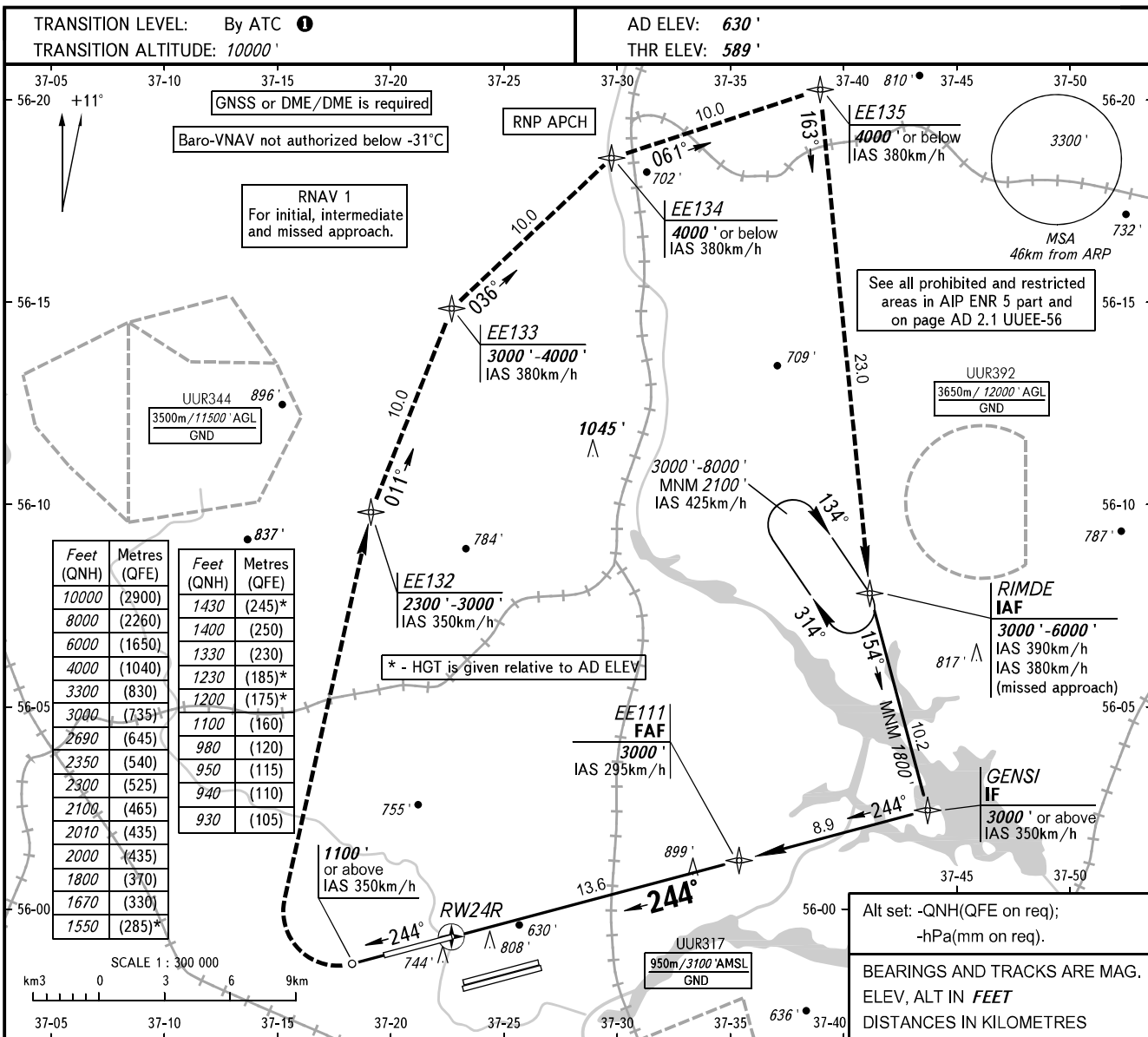


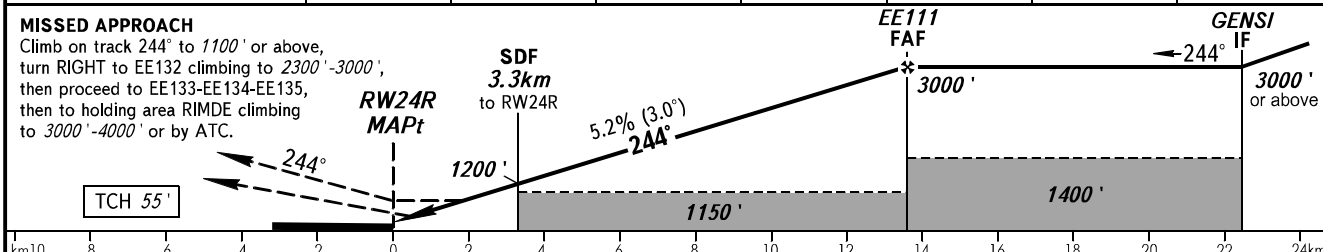
**INSTRUMENT
APPROACH
CHART - ICAO**

SHEREMETYEVO ARRIVAL **122.700 135.900**
118.100 126.600

MOSCOW, RUSSIA
SHEREMETYEVO
RNP X RWY 24R



DIST to RW24R	2.0	4.0	6.0	8.0	10.0	12.0	13.6
ALTITUDE	980'	1330'	1670'	2010'	2350'	2690'	3000'



OCA(H)		A	B	C	D	① - FL110 when QNH is 1013 hPa (760mm mercury column) or above; - FL120 when QNH is 977 hPa (733mm mercury column) or above, but less than 1013 hPa (760mm mercury column); - FL130 when QNH is less than 977 hPa (733mm mercury column).							
Straight-in Approach	MNM climb gradient for missed APCH	LNAV	1040' (450')	1040' (450')	1040' (450')	1040' (450')							
	LNAV/VNAV		930' (350')	940' (350')	950' (360')	980' (400')							
Circling			1200' (570')	1230' (600')	1430' (800')	1550' (920')							
GROUND SPEED		km/h	150	180	210	240	270	300	330	360	390	420	450
RATE OF DESCENT		m/s	2.2	2.6	3.0	3.5	3.9	4.3	4.8	5.2	5.6	6.1	6.5
		ft/min	427	512	597	682	768	853	938	1024	1109	1195	1280

CHANGE: UUR392