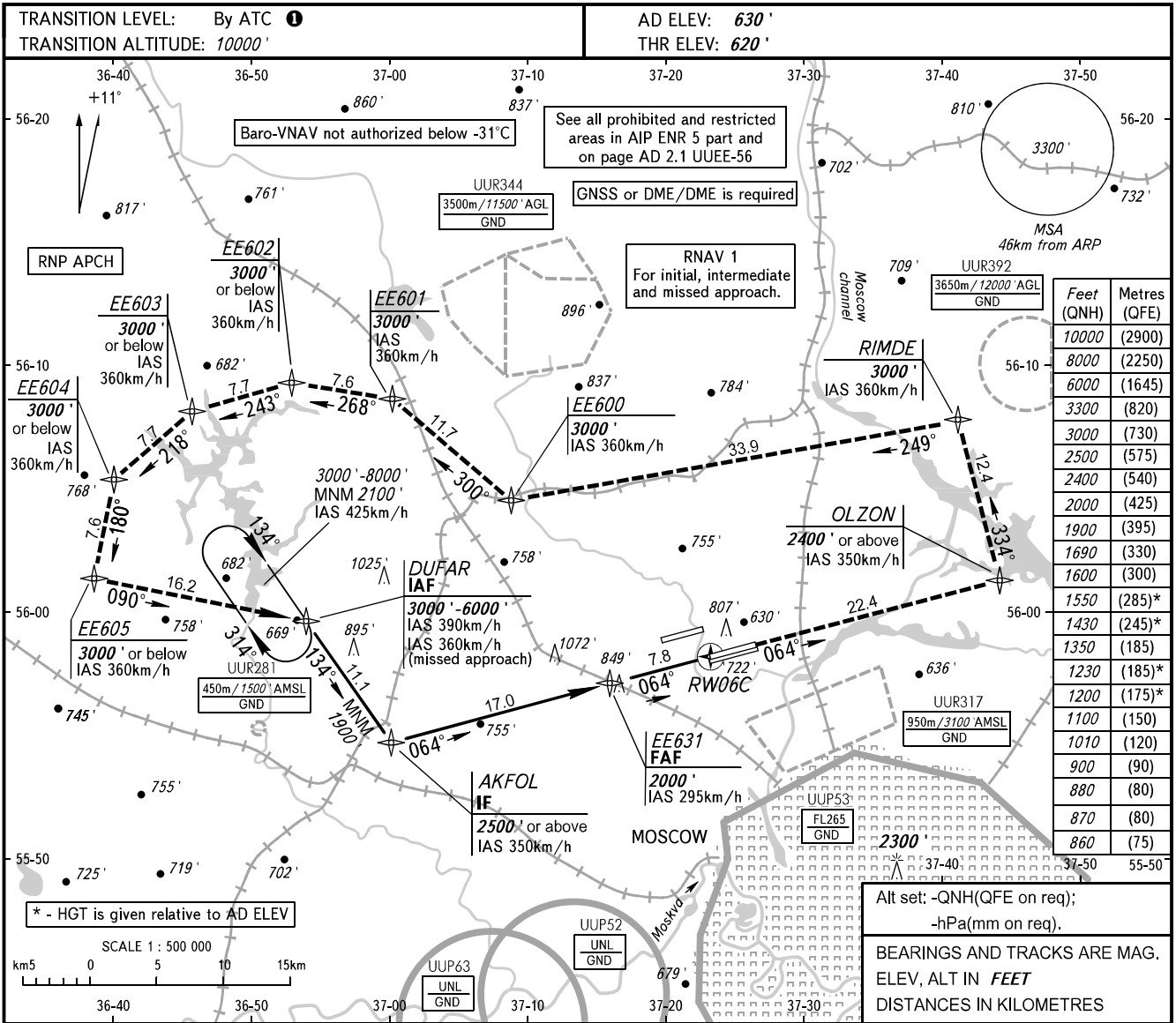


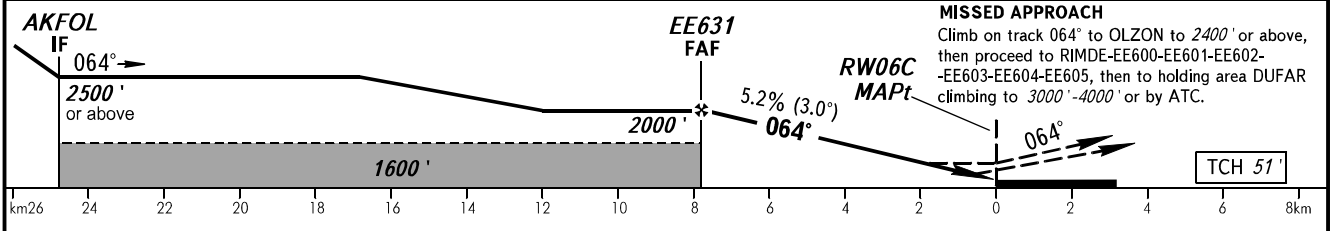
**INSTRUMENT
APPROACH
CHART - ICAO**

SHEREMETYEVO ARRIVAL **122.700 135.900**
118.100 126.600

MOSCOW, RUSSIA
SHEREMETYEVO
RNP RWY 06C



DIST to RW06C	7.8	6.0	4.0	2.0
ALTITUDE	2000'	1690'	1350'	1010'



		OCA(H)															
		A	B	C	D												
Straight-in Approach	MNM climb gradient for missed APCH	RNAV	1100' (480')	1100' (480')	1100' (480')	1100' (480')											
		RNAV/VNAV	860' (240')	870' (250')	880' (260')	900' (280')											
Circling		1200' (570')	1230' (600')	1430' (800')	1550' (920')												

- 1 - FL110 when QNH is 1013 hPa (760mm mercury column) or above;
- FL120 when QNH is 977 hPa (733mm mercury column) or above, but less than 1013 hPa (760mm mercury column);
- FL130 when QNH is less than 977 hPa (733mm mercury column).

GROUND SPEED	km/h	150	180	210	240	270	300	330	360	390	420	450
RATE OF DESCENT	m/s	2.2	2.6	3.1	3.5	3.9	4.3	4.8	5.2	5.6	6.1	6.5
	ft/min	427	512	597	683	768	853	939	1024	1109	1195	1280

CHANGE: NIL