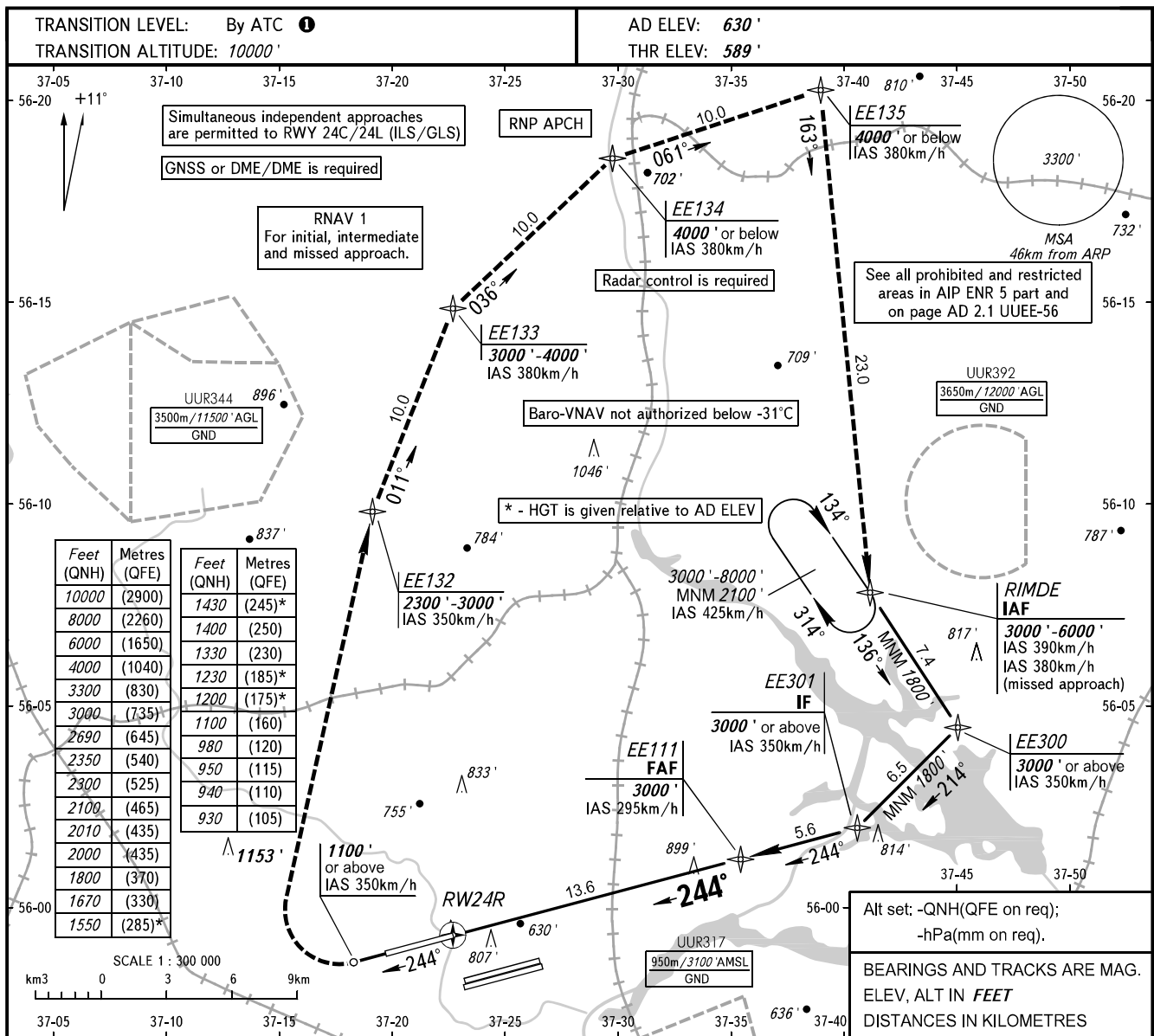


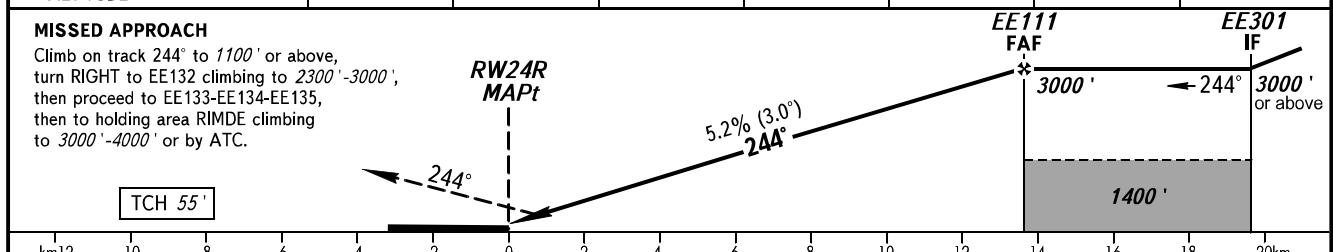
**INSTRUMENT  
APPROACH  
CHART - ICAO**

SHEREMETYEVO ARRIVAL **122.700 135.900**  
**118.100 126.600**

**MOSCOW, RUSSIA**  
**SHEREMETYEVO**  
**RNP Y RWY 24R**



DIST to RW24R	2.0	4.0	6.0	8.0	10.0	12.0	13.6
ALTITUDE	980'	1330'	1670'	2010'	2350'	2690'	3000'



OCA(H)		A	B	C	D								
Straight-in Approach	LNNAV/VNAV	930' (350')	940' (350')	950' (360')	980' (400')								
	MNM climb gradient for missed APCH												
Circling		1200' (570')	1230' (600')	1430' (800')	1550' (920')								
GROUND SPEED		km/h	150	180	210	240	270	300	330	360	390	420	450
RATE OF DESCENT		m/s	2.2	2.6	3.0	3.5	3.9	4.3	4.8	5.2	5.6	6.1	6.5
		ft/min	427	512	597	682	768	853	938	1024	1109	1195	1280

① - FL110 when QNH is 1013 hPa (760mm mercury column) or above;  
- FL120 when QNH is 977 hPa (733mm mercury column) or above, but less than 1013 hPa (760mm mercury column);  
- FL130 when QNH is less than 977 hPa (733mm mercury column).