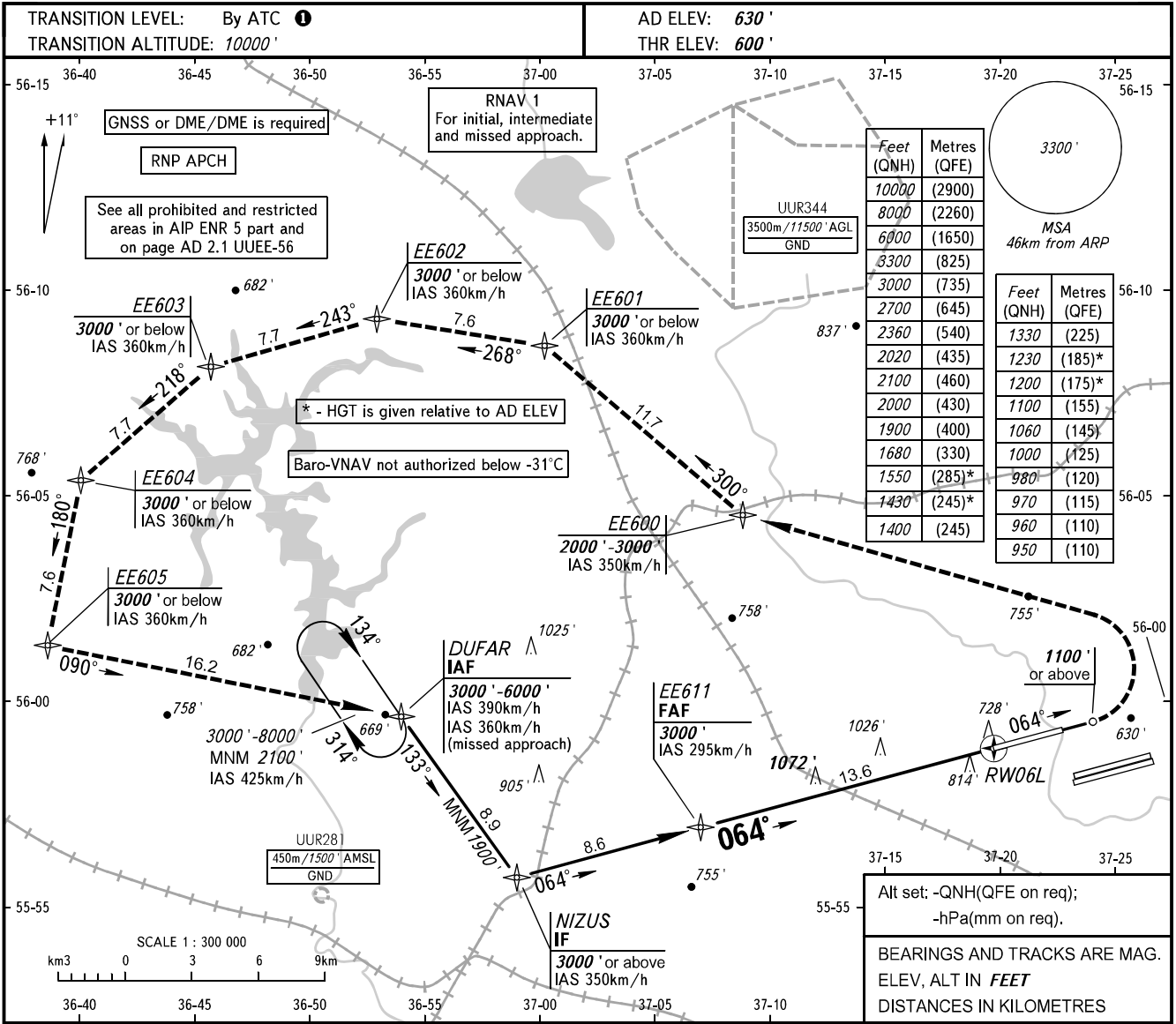


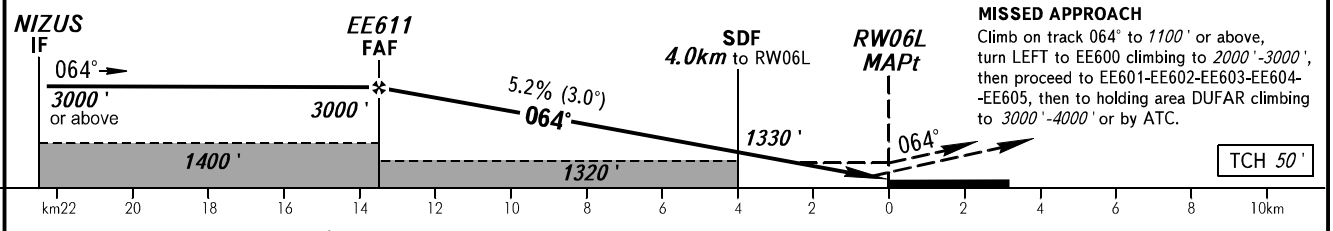
**INSTRUMENT
APPROACH
CHART - ICAO**

SHEREMETYEVO ARRIVAL **122.700 135.900**
118.100 126.600

MOSCOW, RUSSIA
SHEREMETYEVO
RNP RWY 06L



DIST to RW06L	13.6	12.0	10.0	8.0	6.0	4.0	2.0
ALTITUDE	3000'	2700'	2360'	2020'	1680'	1330'	1000'



OCA(H)		A	B	C	D
Straight-in	MNM	1060' (460')	1060' (460')	1060' (460')	1060' (460')
	LNAV	1060' (460')	1060' (460')	1060' (460')	1060' (460')
Approach	MNM	950' (350')	960' (360')	970' (370')	980' (380')
	LNAV/VNAV	950' (350')	960' (360')	970' (370')	980' (380')
Circling		1200' (570')	1230' (600')	1430' (800')	1550' (920')

- 1** - FL110 when QNH is 1013 hPa (760mm mercury column) or above;
- FL120 when QNH is 977 hPa (733mm mercury column) or above, but less than 1013 hPa (760mm mercury column);
- FL130 when QNH is less than 977 hPa (733mm mercury column).

GROUND SPEED	km/h	150	180	210	240	270	300	330	360	390	420	450
	RATE OF DESCENT	m/s	2.2	2.6	3.0	3.5	3.9	4.3	4.8	5.2	5.6	6.1
	ft/min	427	512	597	682	768	853	938	1024	1109	1195	1280

CHANGE: EE611