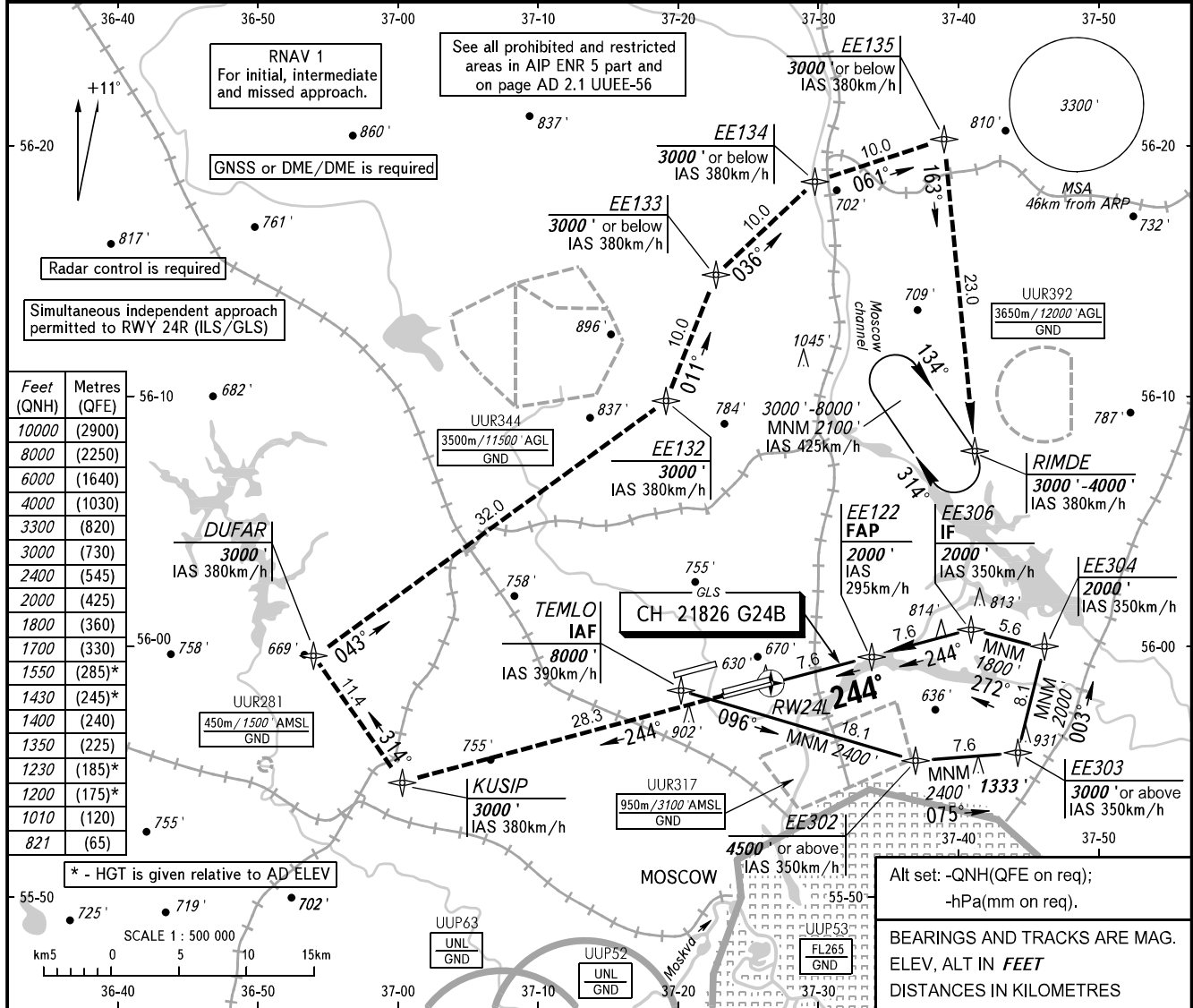


**INSTRUMENT  
APPROACH  
CHART - ICAO**

SHEREMETYEVO ARRIVAL **122.700 135.900**  
**118.100 126.600**

**MOSCOW, RUSSIA**  
SHEREMETYEVO  
GLS Y RWY 24L

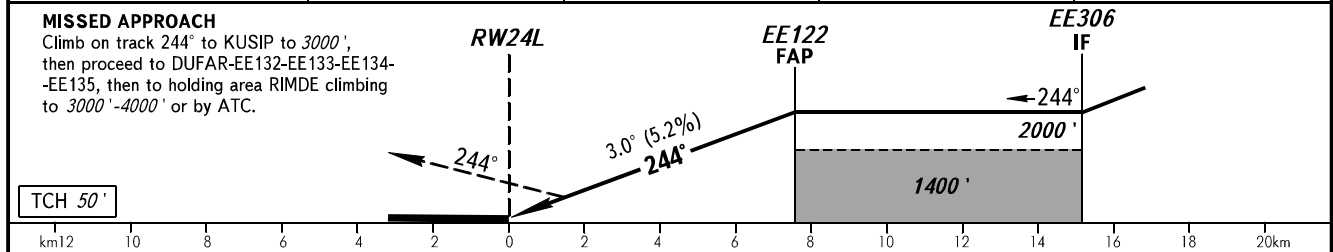
**GBAS** CH 21826 G24B      **TRANSITION LEVEL:** By ATC **①**      **AD ELEV:** 630'  
**TRANSITION ALTITUDE:** 10000'      **THR ELEV:** 621'



Feet (QNH)	Metres (QFE)
10000	(2900)
8000	(2250)
6000	(1640)
4000	(1030)
3300	(820)
3000	(730)
2400	(545)
2000	(425)
1800	(360)
1700	(330)
1550	(285)*
1430	(245)*
1400	(240)
1350	(225)
1230	(185)*
1200	(175)*
1010	(120)
821	(65)

\* - HGT is given relative to AD ELEV  
Alt set: -QNH(QFE on req);  
-hPa(mm on req).  
BEARINGS AND TRACKS ARE MAG.  
ELEV, ALT IN FEET  
DISTANCES IN KILOMETRES

DIST to RW24L	2.0	4.0	6.0	7.6
ALTITUDE	1010'	1350'	1700'	2000'



OCA(H)		A	B	C	D								
Straight-in	MNM climb gradient for missed APCH	① - FL110 when QNH is 1013 hPa (760mm mercury column) or above; - FL120 when QNH is 977 hPa (733mm mercury column) or above, but less than 1013 hPa (760mm mercury column); - FL130 when QNH is less than 977 hPa (733mm mercury column).											
	Approach	821' (200')	821' (200')	821' (200')	821' (200')								
Circling		1200' (570')	1230' (600')	1430' (800')	1550' (920')								
GROUND SPEED		km/h	150	180	210	240	270	300	330	360	390	420	450
RATE OF DESCENT		m/s	2.2	2.6	3.1	3.5	3.9	4.3	4.8	5.2	5.6	6.1	6.5
		ft/min	427	512	597	683	768	853	939	1024	1109	1195	1280