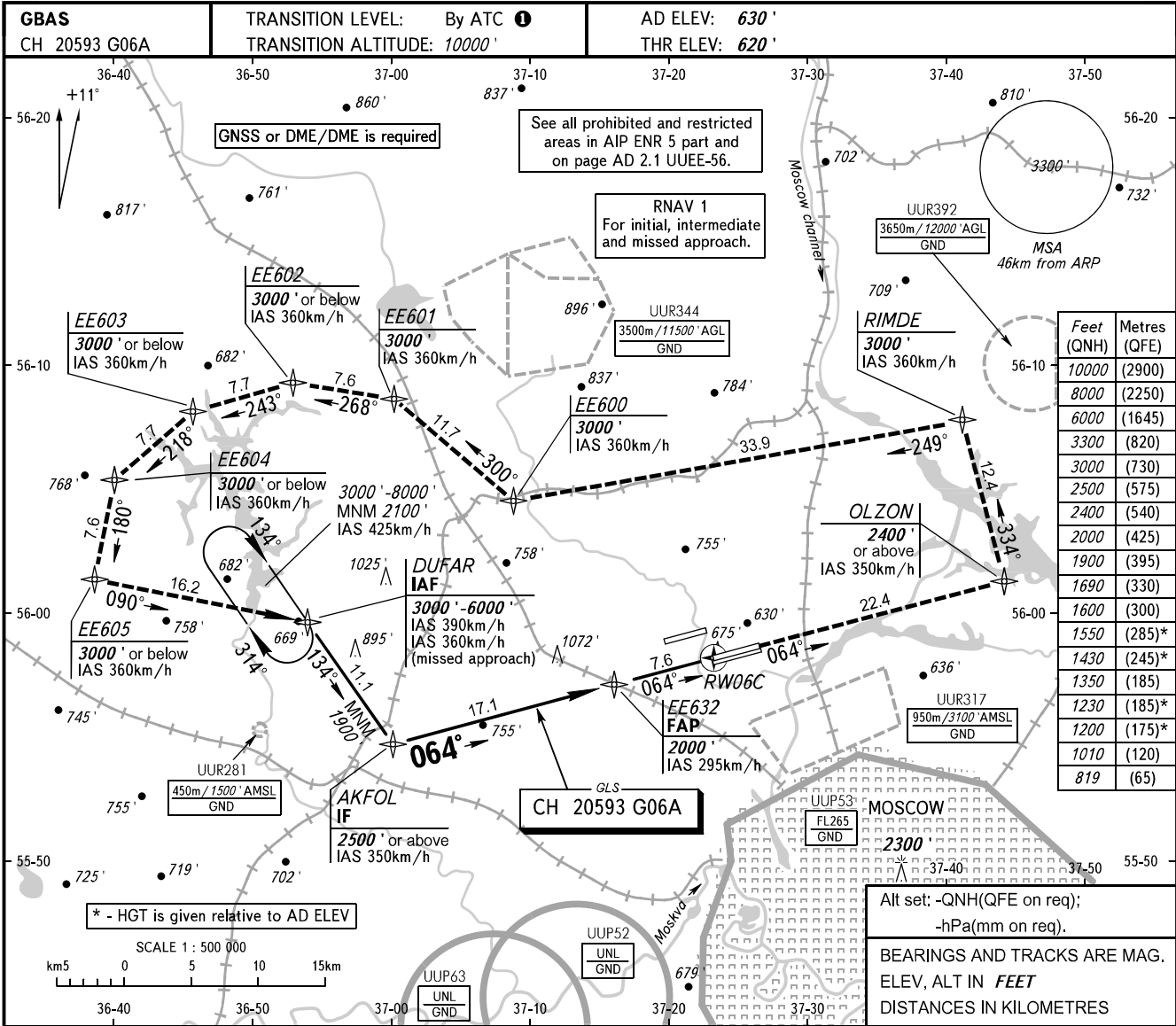


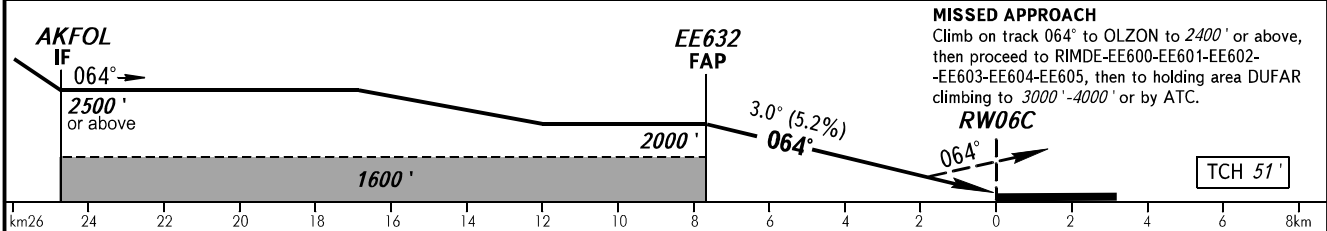
**INSTRUMENT  
APPROACH  
CHART - ICAO**

SHEREMETYEVO ARRIVAL **122.700 135.900**  
**118.100 126.600**

**MOSCOW, RUSSIA**  
**SHEREMETYEVO**  
**GLS RWY 06C**



DIST to RW06C	7.6	6.0	4.0	2.0
ALTITUDE	2000'	1690'	1350'	1010'



OCA(H)		A	B	C	D	
Straight-in Approach	MNM climb gradient for missed APCH	CAT I	819' (200')	819' (200')	819' (200')	819' (200')
	Circling		1200' (570')	1230' (600')	1430' (800')	1550' (920')

**TRANSITION LEVEL:**  
 - FL110 when QNH is 1013 hPa (760mm mercury column) or above;  
 - FL120 when QNH is 977 hPa (733mm mercury column) or above, but less than 1013 hPa (760mm mercury column);  
 - FL130 when QNH is less than 977 hPa (733mm mercury column).

GROUND SPEED	km/h	150	180	210	240	270	300	330	360	390	420	450
	RATE OF DESCENT	m/s	2.2	2.6	3.1	3.5	3.9	4.3	4.8	5.2	5.6	6.1
	ft/min	427	512	597	683	768	853	939	1024	1109	1195	1280