

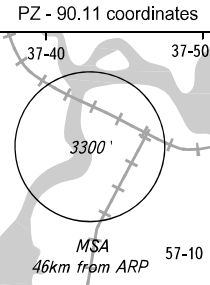
STANDARD ARRIVAL CHART  
INSTRUMENT (STAR) - ICAO  
TRANSITION  
LEVEL: BY ATC

SHEREMETYEVO ARRIVAL	127.700	135.900	118.100	126.600
SHEREMETYEVO TOWER	118.700	120.700	131.500	119.300
MOSCOW APPROACH	127.200	128.000	134.000	131.200 134.675

# BESTA 1H, SUKIT 1J, TIRDE 1J

RNAV 1

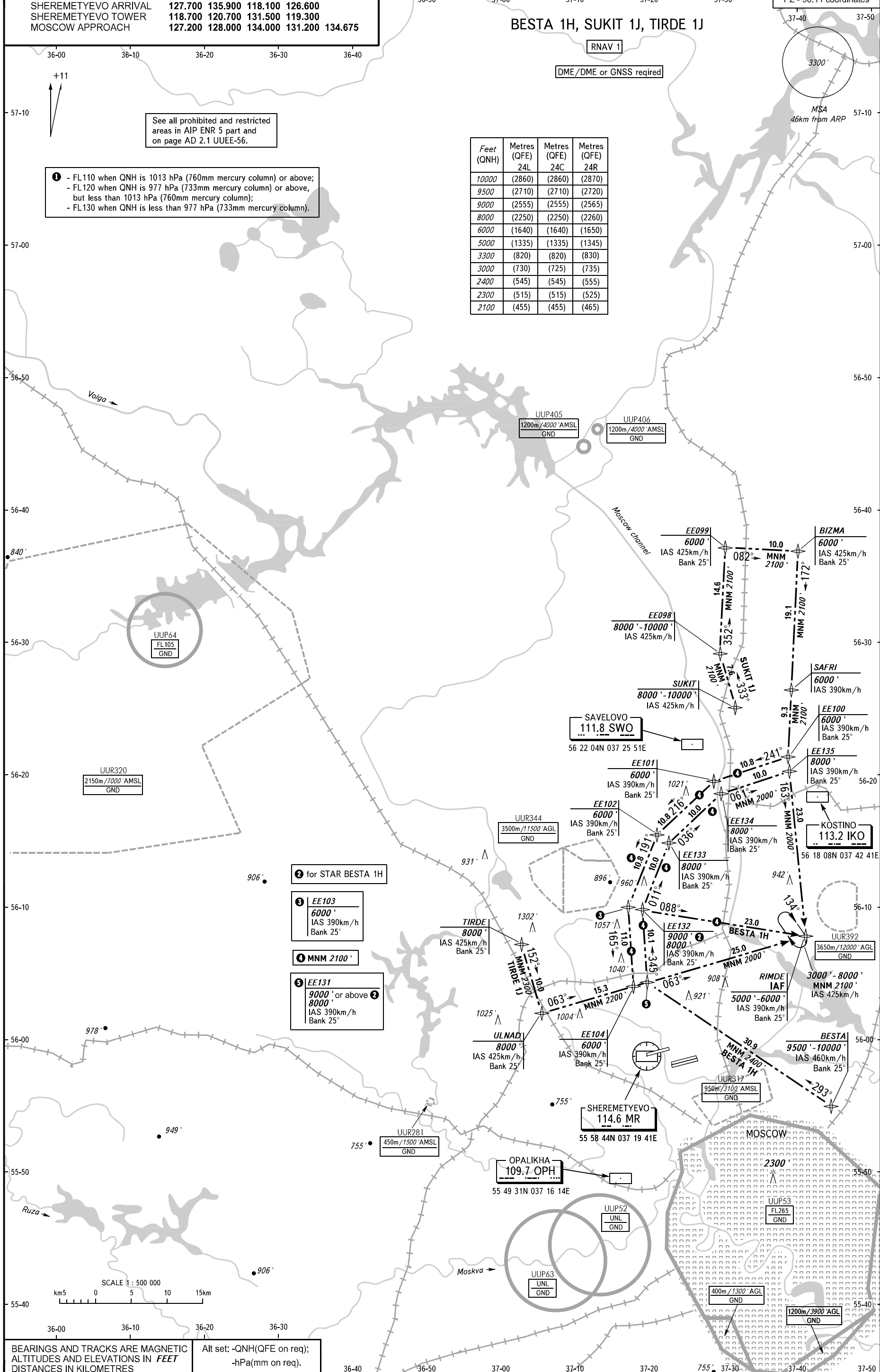
DME/DME or GNSS required



See all prohibited and restricted areas in AIP ENR 5 part and on page AD 2.1 UUEE-56.

- 1 - FL110 when QNH is 1013 hPa (760mm mercury column) or above;
- FL120 when QNH is 977 hPa (733mm mercury column) or above, but less than 1013 hPa (760mm mercury column);
- FL130 when QNH is less than 977 hPa (733mm mercury column).

Feet (QNH)	Metres (QFE) 24L	Metres (QFE) 24C	Metres (QFE) 24R
10000	(2860)	(2860)	(2870)
9500	(2710)	(2710)	(2720)
9000	(2555)	(2555)	(2565)
8000	(2250)	(2250)	(2260)
6000	(1640)	(1640)	(1650)
5000	(1335)	(1335)	(1345)
3300	(820)	(820)	(830)
3000	(730)	(725)	(735)
2400	(545)	(545)	(555)
2300	(515)	(515)	(525)
2100	(455)	(455)	(465)



- 2 for STAR BESTA 1H
- 3 EE103  
6000'  
IAS 390km/h  
Bank 25°
- 4 MNM 2100'
- 5 EE131  
9000' or above 2  
8000'  
IAS 390km/h  
Bank 25°



BEARINGS AND TRACKS ARE MAGNETIC  
ALTITUDES AND ELEVATIONS IN FEET  
DISTANCES IN KILOMETRES

Alt set: -QNH(QFE on req);  
-hPa(mm on req).

CHANGE: New chart

MOSCOW, RUSSIA  
SHEREMETYEVO  
RNAV Rwy 24L, 24C, 24R