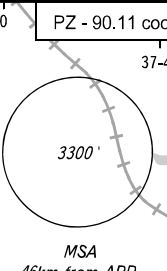


SHEREMETYEVO ARRIVAL	127.700	135.900	118.100	126.600
SHEREMETYEVO TOWER	118.700	120.700	131.500	119.300
MOSCOW APPROACH	127.200	128.000	134.000	131.200 134.675

BESTA 1E, LONAF 1F, TAMFI 1F

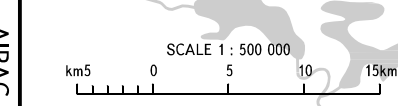
RNAV 1  
DME/DME or GNSS required



Feet (QNH)	Metres (QFE) 06L	Metres (QFE) 06C	Metres (QFE) 06R
10000	(2870)	(2860)	(2860)
9000	(2565)	(2555)	(2555)
8000	(2260)	(2250)	(2250)
7000	(1955)	(1945)	(1945)
6000	(1650)	(1645)	(1645)
5000	(1345)	(1340)	(1340)
3300	(825)	(820)	(820)
3000	(735)	(730)	(730)
2400	(550)	(545)	(545)
2300	(520)	(515)	(515)
2100	(460)	(455)	(455)

- 1 - FL110 when QNH is 1013 hPa (760mm mercury column) or above;
- FL120 when QNH is 977 hPa (733mm mercury column) or above, but less than 1013 hPa (760mm mercury column);
- FL130 when QNH is less than 977 hPa (733mm mercury column).

See all prohibited and restricted areas in AIP ENR 5 part and on page AD 2.1 UUEE-56.



BEARINGS AND TRACKS ARE MAGNETIC ALTITUDES AND ELEVATIONS IN FEET DISTANCES IN KILOMETRES  
Alt set: - QNH (QFE on req); - hPa (mm on req).