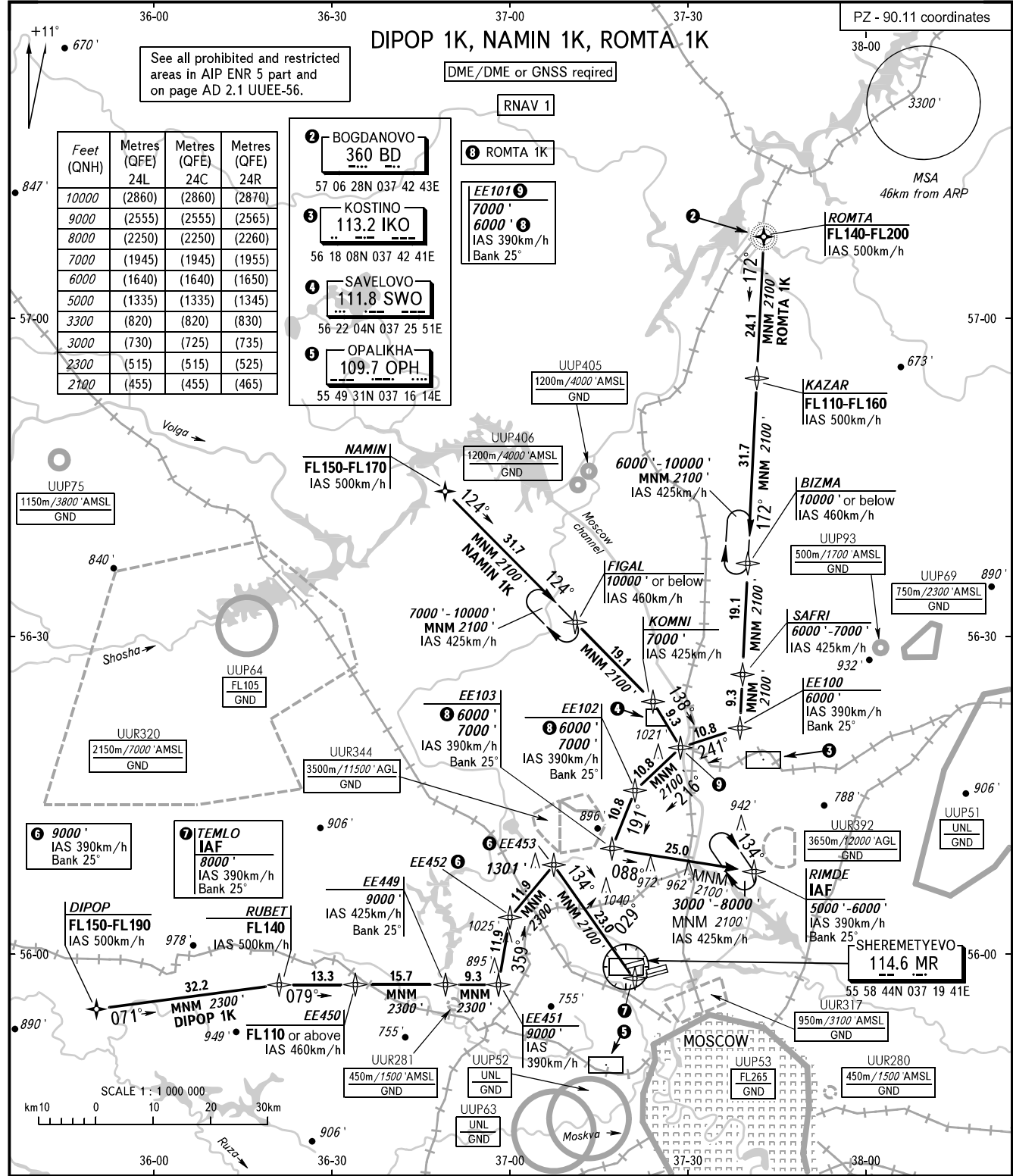


STANDARD ARRIVAL CHART  
INSTRUMENT (STAR) - ICAO

MOSCOW, RUSSIA  
SHEREMETYEVO  
RNAV RWY 24L, 24C, 24R

TRANSITION  
LEVEL: By ATC ①



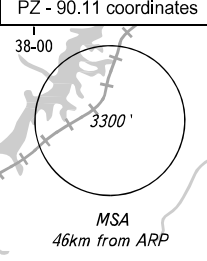
See all prohibited and restricted areas in AIP ENR 5 part and on page AD 2.1 UUEE-56.

Feet (QNH)	Metres (QFE) 24L	Metres (QFE) 24C	Metres (QFE) 24R
10000	(2860)	(2860)	(2870)
9000	(2555)	(2555)	(2565)
8000	(2250)	(2250)	(2260)
7000	(1945)	(1945)	(1955)
6000	(1640)	(1640)	(1650)
5000	(1335)	(1335)	(1345)
3300	(820)	(820)	(830)
3000	(730)	(725)	(735)
2300	(515)	(515)	(525)
2100	(455)	(455)	(465)

- ② BOGDANOVO  
360 BD  
57 06 28N 037 42 43E
- ③ KOSTINO  
113.2 IKO  
56 18 08N 037 42 41E
- ④ SAVEKOVO  
111.8 SWO  
56 22 04N 037 25 51E
- ⑤ OPALIKHA  
109.7 OPH  
55 49 31N 037 16 14E

DME/DME or GNSS required

RNAV 1



SHEREMETYEVO ARRIVAL	127.700	135.900	118.100	126.600
SHEREMETYEVO TOWER	118.700	120.700	131.500	119.300
MOSCOW APPROACH	127.200	128.000	134.000	131.200 134.675

- ① - FL110 when QNH is 1013 hPa (760mm mercury column) or above;
- FL120 when QNH is 977 hPa (733mm mercury column) or above, but less than 1013 hPa (760mm mercury column);
- FL130 when QNH is less than 977 hPa (733mm mercury column).

BEARINGS AND TRACKS ARE MAGNETIC  
ALTITUDES AND ELEVATIONS IN FEET  
DISTANCES IN KILOMETRES

Alt set: -QNH(QFE on req);  
-hPa(mm on req).