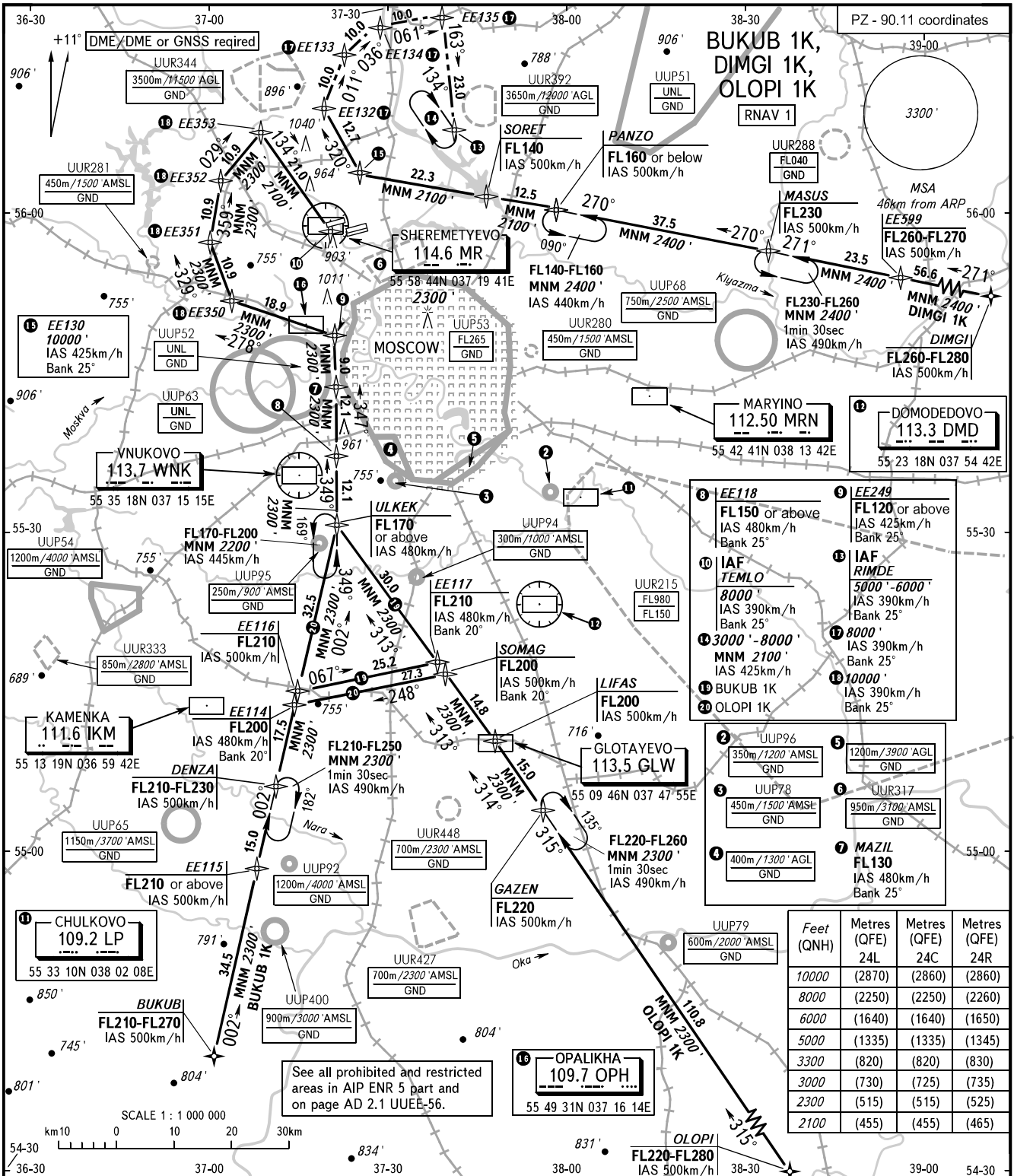


STANDARD ARRIVAL CHART  
INSTRUMENT (STAR) - ICAO

MOSCOW, RUSSIA  
SHEREMETYEVO  
RNAV RWY 24L, 24C, 24R

TRANSITION  
LEVEL: By ATC ①



- ① EE118 FL150 or above IAS 480km/h Bank 25°
- ② UUP96 350m/1200' AMSL GND
- ③ UUP78 450m/1500' AMSL GND
- ④ 400m/1300' AGL GND
- ⑤ EE249 FL120 or above IAS 425km/h Bank 25°
- ⑥ UUR317 950m/3100' AMSL GND
- ⑦ MAZIL FL130 IAS 480km/h Bank 25°
- ⑧ IAF TEMLO 8000' IAS 390km/h Bank 25°
- ⑨ 3000' - 8000' MNM 2100' IAS 425km/h
- ⑩ BUKUB 1K
- ⑪ OLOPI 1K
- ⑫ IAF RIMDE 5000' - 6000' IAS 390km/h Bank 25°
- ⑬ 8000' IAS 390km/h Bank 25°
- ⑭ 10000' IAS 390km/h Bank 25°
- ⑮ UUR92 1200m/4000' AMSL GND
- ⑯ UUR427 700m/2300' AMSL GND
- ⑰ UUR400 900m/3000' AMSL GND
- ⑱ UUR448 700m/2300' AMSL GND
- ⑲ UUR215 FL980 FL150
- ⑳ UUR280 450m/1500' AMSL GND
- ㉑ UUP52 UNL GND
- ㉒ UUP63 UNL GND
- ㉓ UUP54 1200m/4000' AMSL GND
- ㉔ UUR333 850m/2800' AMSL GND
- ㉕ UUP65 1150m/3700' AMSL GND
- ㉖ UUR281 450m/1500' AMSL GND
- ㉗ UUR344 3500m/11500' AGL GND
- ㉘ UUR392 3650m/12000' AGL GND
- ㉙ UUP51 UNL GND
- ㉚ UUR288 FL040 GND
- ㉛ UUR280 450m/1500' AMSL GND
- ㉜ UUP68 750m/2500' AMSL GND
- ㉝ UUR280 450m/1500' AMSL GND
- ㉞ UUR280 450m/1500' AMSL GND
- ㉟ UUR280 450m/1500' AMSL GND
- ㊱ UUR280 450m/1500' AMSL GND
- ㊲ UUR280 450m/1500' AMSL GND
- ㊳ UUR280 450m/1500' AMSL GND
- ㊴ UUR280 450m/1500' AMSL GND
- ㊵ UUR280 450m/1500' AMSL GND
- ㊶ UUR280 450m/1500' AMSL GND
- ㊷ UUR280 450m/1500' AMSL GND
- ㊸ UUR280 450m/1500' AMSL GND
- ㊹ UUR280 450m/1500' AMSL GND
- ㊺ UUR280 450m/1500' AMSL GND
- ㊻ UUR280 450m/1500' AMSL GND
- ㊼ UUR280 450m/1500' AMSL GND
- ㊽ UUR280 450m/1500' AMSL GND
- ㊾ UUR280 450m/1500' AMSL GND
- ㊿ UUR280 450m/1500' AMSL GND

Feet (QNH)	Metres (QFE) 24L	Metres (QFE) 24C	Metres (QFE) 24R
10000	(2870)	(2860)	(2860)
8000	(2250)	(2250)	(2260)
6000	(1640)	(1640)	(1650)
5000	(1335)	(1335)	(1345)
3300	(820)	(820)	(830)
3000	(730)	(725)	(735)
2300	(515)	(515)	(525)
2100	(455)	(455)	(465)

See all prohibited and restricted areas in AIP ENR 5 part and on page AD 2.1 UUEE-56.

SHERMETYEVO ARRIVAL	127.700	135.900	118.100	126.600
SHERMETYEVO TOWER	118.700	120.700	131.500	119.300
MOSCOW APPROACH	127.200	128.000	134.000	131.200 134.675

① - FL110 when QNH is 1013 hPa (760mm mercury column) or above;  
 - FL120 when QNH is 977 hPa (733mm mercury column) or above, but less than 1013 hPa (760mm mercury column);  
 - FL130 when QNH is less than 977 hPa (733mm mercury column).

BEARINGS AND TRACKS ARE MAGNETIC  
 ALTITUDES AND ELEVATIONS IN FEET  
 DISTANCES IN KILOMETRES

Alt set: -QNH(QFE on req);  
 -hPa(mm on req).