

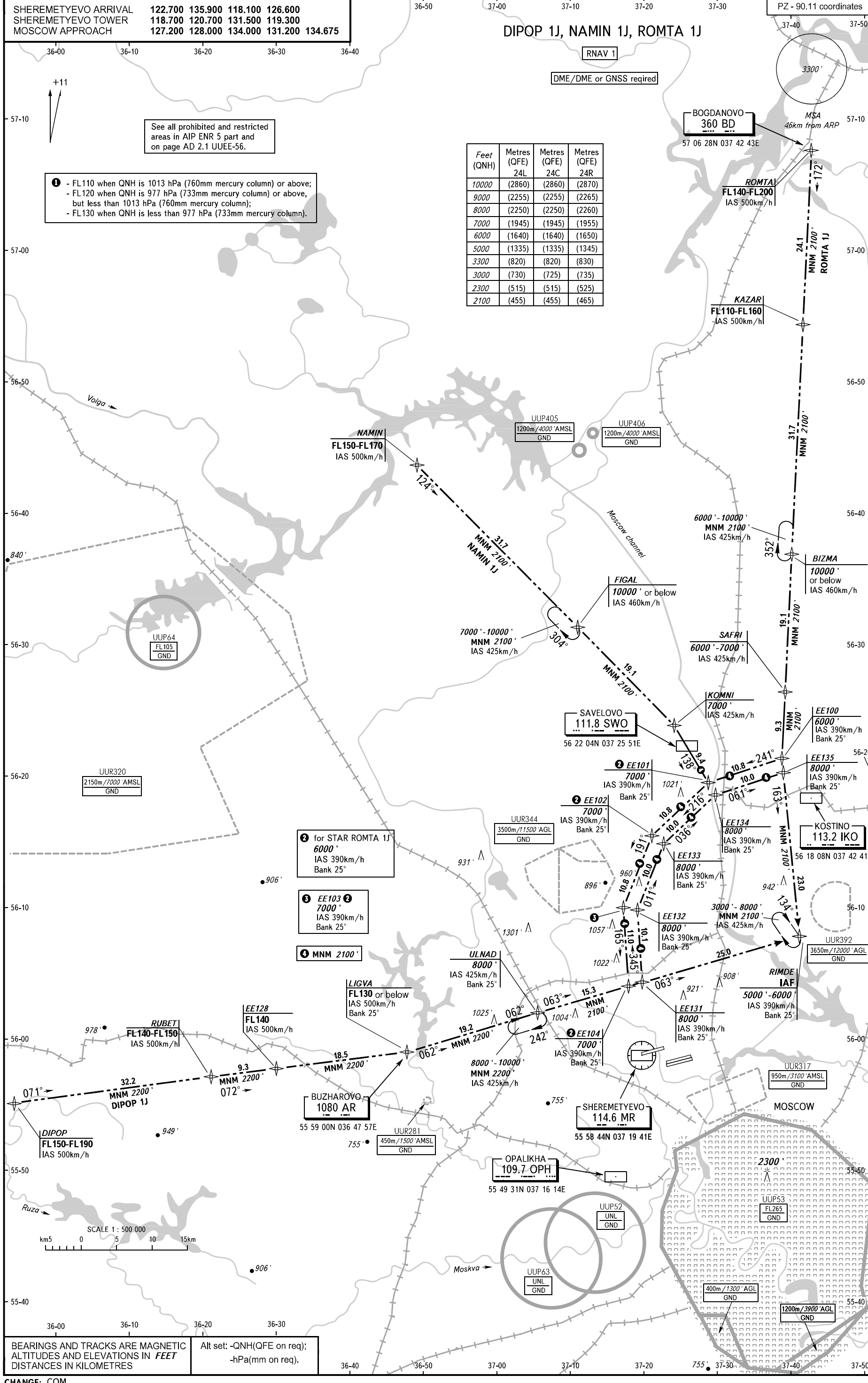
SHEREMETEYEV ARRIVAL	122.700	135.900	118.100	126.600
SHEREMETEYEV TOWER	118.700	120.700	131.500	119.300
MOSCOW APPROACH	127.200	128.000	134.000	131.200 134.675

# DIPOP 1J, NAMIN 1J, ROMTA 1J

See all prohibited and restricted areas in AIP ENR 5 part and on page AD 2.1 UUEE-56.

- 1 - FL110 when QNH is 1013 hPa (760mm mercury column) or above;
- FL120 when QNH is 977 hPa (733mm mercury column) or above, but less than 1013 hPa (760mm mercury column);
- FL130 when QNH is less than 977 hPa (733mm mercury column).

Feet (QNH)	Metres (QFE) 24L	Metres (QFE) 24C	Metres (QFE) 24R
10000	(2860)	(2860)	(2870)
9000	(2255)	(2255)	(2265)
8000	(2250)	(2250)	(2260)
7000	(1945)	(1945)	(1955)
6000	(1640)	(1640)	(1650)
5000	(1335)	(1335)	(1345)
3300	(820)	(820)	(830)
3000	(730)	(725)	(735)
2300	(515)	(515)	(525)
2100	(455)	(455)	(465)



BEARINGS AND TRACKS ARE MAGNETIC  
ALTITUDES AND ELEVATIONS IN FEET  
DISTANCES IN KILOMETRES

Alt set: -QNH(QFE on req);  
-hPa(mm on req).

CHANGE: COM