

SHEREMETYEVO ARRIVAL	122.700	135.900	118.100	126.600
SHEREMETYEVO TOWER	118.700	120.700	131.500	119.300
MOSCOW APPROACH	127.200	128.000	134.000	131.200 134.675

DIPOP 1F, NAMIN 1F, ROMTA 1F

STANDARD ARRIVAL CHART  
INSTRUMENT (STAR) - ICAO

TRANSITION  
LEVEL: By ATC

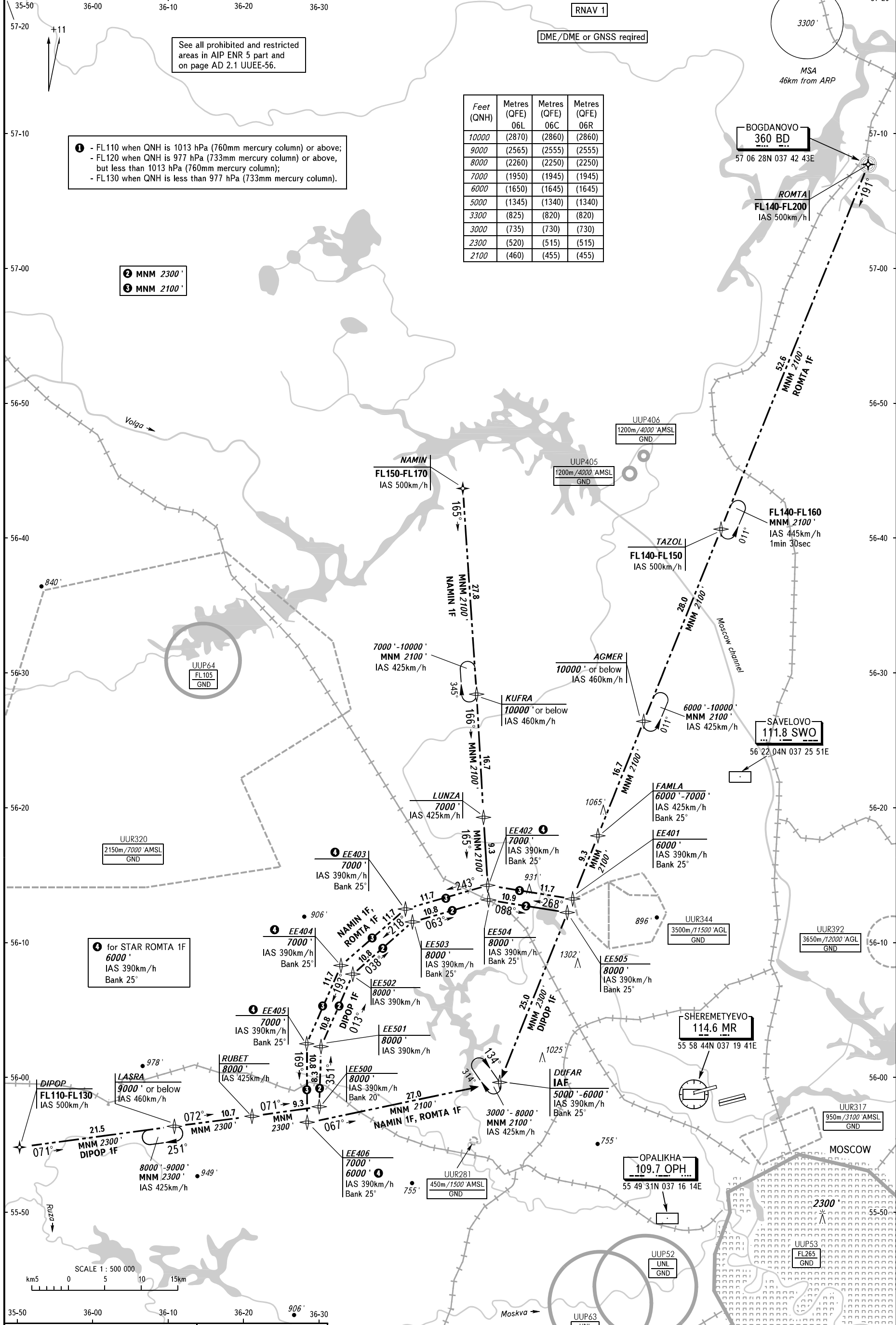
See all prohibited and restricted areas in AIP ENR 5 part and on page AD 2.1 UUEE-56.

- 1 - FL110 when QNH is 1013 hPa (760mm mercury column) or above;
- FL120 when QNH is 977 hPa (733mm mercury column) or above, but less than 1013 hPa (760mm mercury column);
- FL130 when QNH is less than 977 hPa (733mm mercury column).

Feet (QNH)	Metres (QFE) 06L	Metres (QFE) 06C	Metres (QFE) 06R
10000	(2870)	(2860)	(2860)
9000	(2565)	(2555)	(2555)
8000	(2260)	(2250)	(2250)
7000	(1950)	(1945)	(1945)
6000	(1650)	(1645)	(1645)
5000	(1345)	(1340)	(1340)
3300	(825)	(820)	(820)
3000	(735)	(730)	(730)
2300	(520)	(515)	(515)
2100	(460)	(455)	(455)

- 2 MNM 2300'
- 3 MNM 2100'

- 4 for STAR ROMTA 1F  
6000'  
IAS 390km/h  
Bank 25°



BEARINGS AND TRACKS ARE MAGNETIC ALTITUDES AND ELEVATIONS IN FEET DISTANCES IN KILOMETRES

Alt set: -QNH(QFE on req);  
-hPa(mm on req).