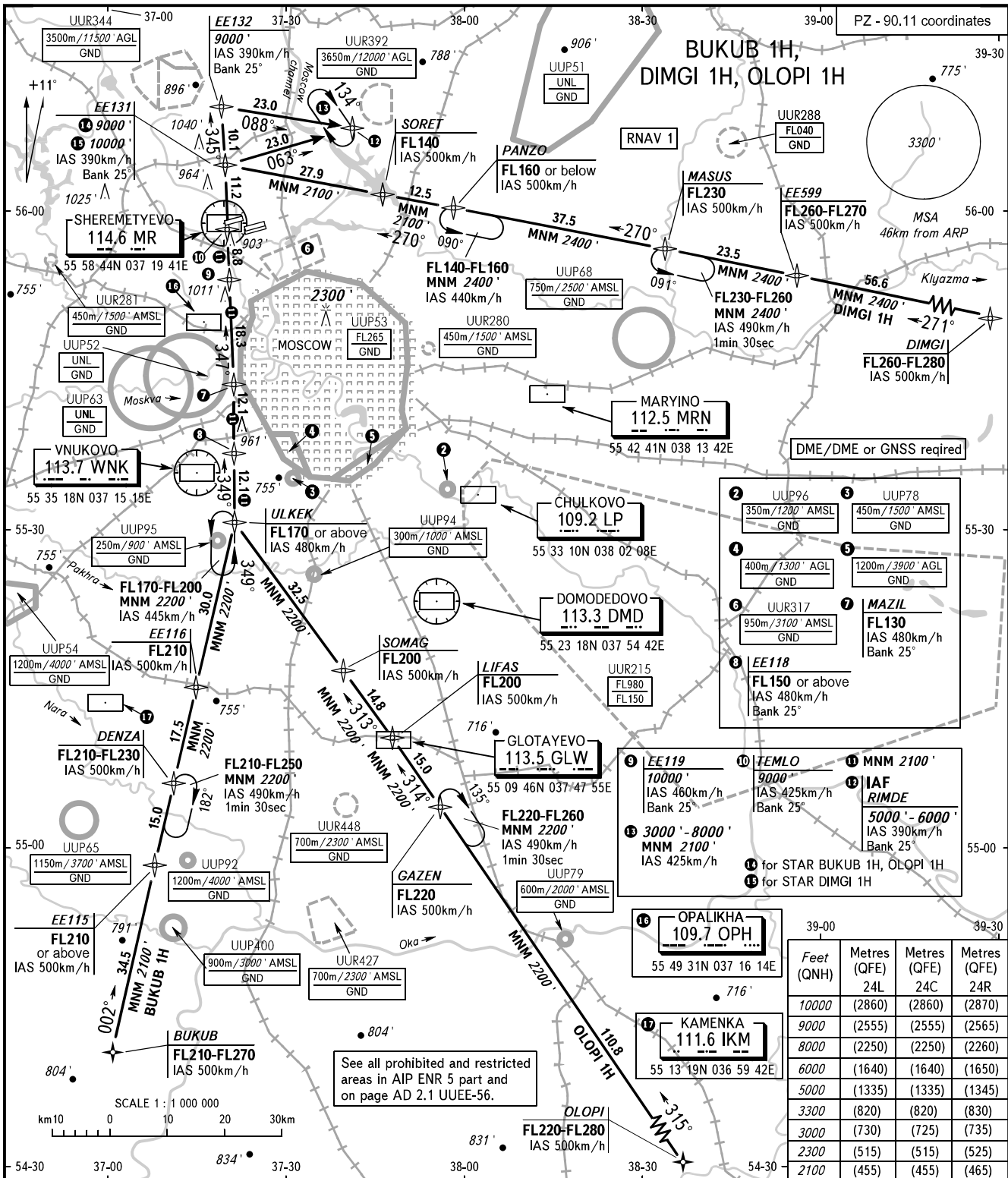


STANDARD ARRIVAL CHART
INSTRUMENT (STAR) - ICAO

TRANSITION
LEVEL: By ATC

MOSCOW, RUSSIA
SHEREMETYEVO
RNAV RWY 24L, 24C, 24R



| | | | | | |
|---------------------|---------|---------|---------|---------|---------|
| SHERMETYEVO ARRIVAL | 127.700 | 135.900 | 118.100 | 126.600 | |
| SHERMETYEVO TOWER | 118.700 | 120.700 | 131.500 | 119.300 | |
| MOSCOW APPROACH | 127.200 | 128.000 | 134.000 | 131.200 | 134.675 |

① - FL110 when QNH is 1013 hPa (760mm mercury column) or above;
 - FL120 when QNH is 977 hPa (733mm mercury column) or above,
 but less than 1013 hPa (760mm mercury column);
 - FL130 when QNH is less than 977 hPa (733mm mercury column).

BEARINGS AND TRACKS ARE MAGNETIC
ALTITUDES AND ELEVATIONS IN FEET
DISTANCES IN KILOMETRES

Alt set: -QNH(QFE on req);
-hPa(mm on req).