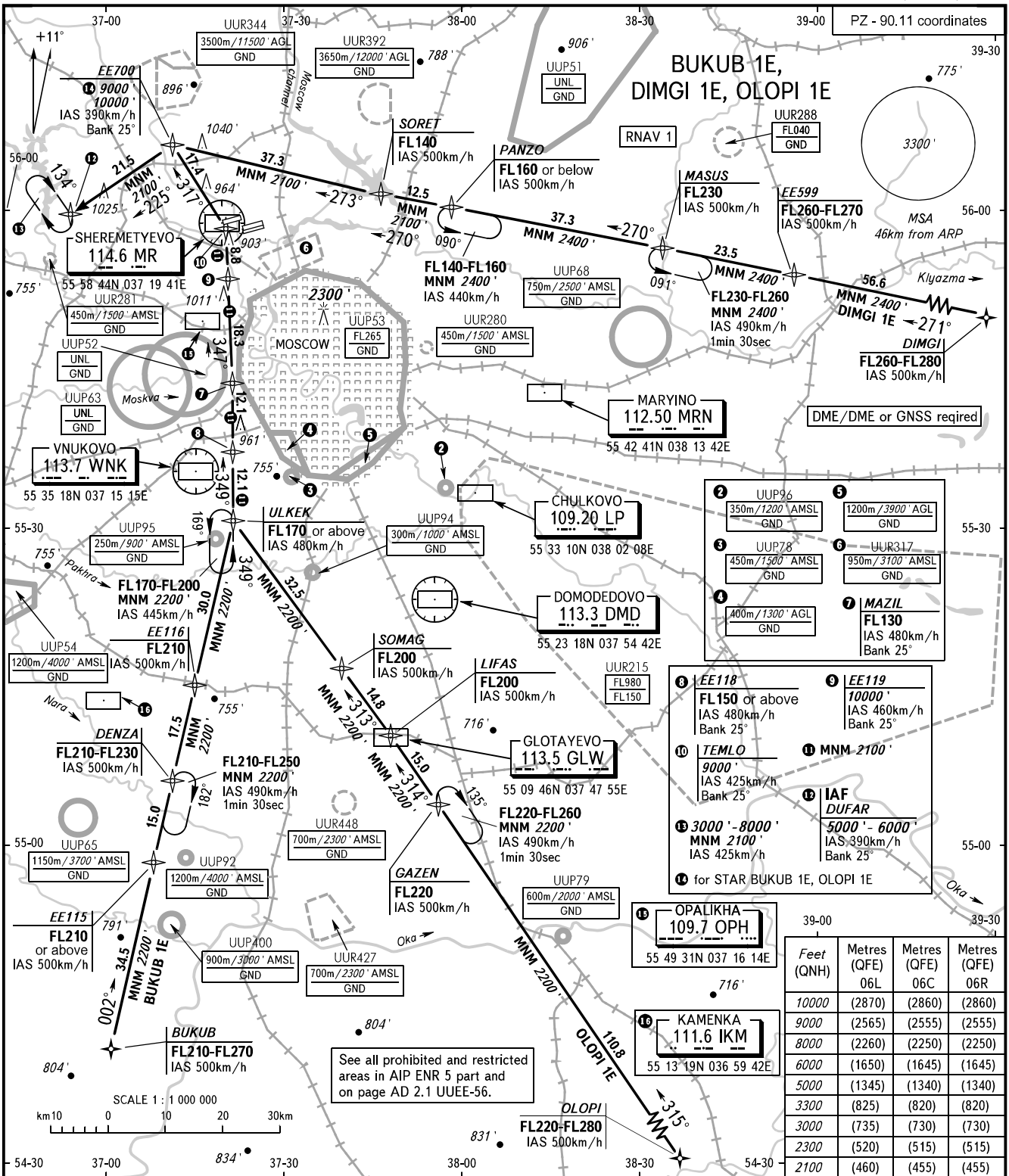


STANDARD ARRIVAL CHART
INSTRUMENT (STAR) - ICAO

MOSCOW, RUSSIA
SHEREMETYEVO
RNAV RWY 06L, 06C, 06R

TRANSITION
LEVEL: By ATC ①



See all prohibited and restricted areas in AIP ENR 5 part and on page AD 2.1 UUEE-56.

Feet (QNH)	Metres (QFE)	Metres (QFE)	Metres (QFE)
	06L	06C	06R
1000	(2870)	(2860)	(2860)
9000	(2565)	(2555)	(2555)
8000	(2260)	(2250)	(2250)
6000	(1650)	(1645)	(1645)
5000	(1345)	(1340)	(1340)
3300	(825)	(820)	(820)
3000	(735)	(730)	(730)
2300	(520)	(515)	(515)
2100	(460)	(455)	(455)

SHEREMETYEVO ARRIVAL	127.700	135.900	118.100	126.600
SHEREMETYEVO TOWER	118.700	120.700	131.500	119.300
MOSCOW APPROACH	127.200	128.000	134.000	131.200 134.675

- ① - FL110 when QNH is 1013 hPa (760mm mercury column) or above;
- FL120 when QNH is 977 hPa (733mm mercury column) or above, but less than 1013 hPa (760mm mercury column);
- FL130 when QNH is less than 977 hPa (733mm mercury column).

BEARINGS AND TRACKS ARE MAGNETIC
ALTITUDES AND ELEVATIONS IN FEET
DISTANCES IN KILOMETRES

Alt set: -QNH(QFE on req);
-hPa(mm on req).

CHANGE: BUKUB 1E, OLOPI 1E