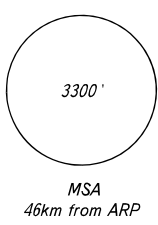


# EMGAS 1K, SOTOG 1K, TOGMO 1K

See all prohibited and restricted areas in AIP ENR 5 part and on page AD 2.1 UUEE-56.

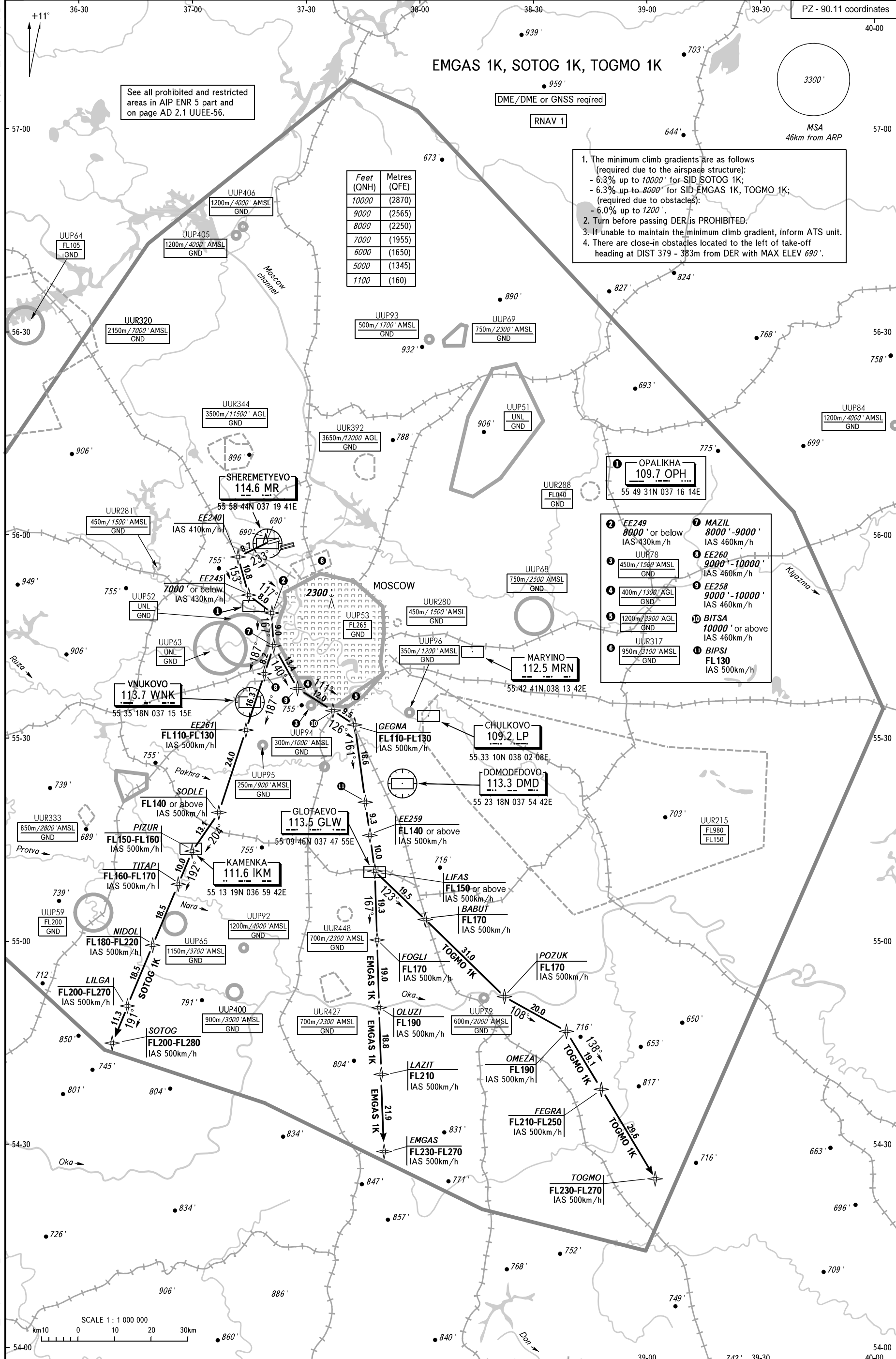
DME/DME or GNSS required

RNAV 1



- The minimum climb gradients are as follows (required due to the airspace structure):
  - 6.3% up to 10000' for SID SOTOG 1K;
  - 6.3% up to 8000' for SID EMGAS 1K, TOGMO 1K;
  - (required due to obstacles):
  - 6.0% up to 1200'.
- Turn before passing DER is PROHIBITED.
- If unable to maintain the minimum climb gradient, inform ATS unit.
- There are close-in obstacles located to the left of take-off heading at DIST 379 - 383m from DER with MAX ELEV 690'.

Feet (QNH)	Metres (QFE)
10000	(2870)
9000	(2565)
8000	(2250)
7000	(1955)
6000	(1650)
5000	(1345)
1100	(160)



OPALIKHA  
109.7 OPH  
55 49 31N 037 16 14E

- |   |  |
|---|--|
| 1 EE249<br>8000' or below<br>IAS 430km/h<br>UUP78<br>450m/1500' AMSL<br>GND | 7 MAZIL<br>8000'-9000'<br>IAS 460km/h      |
| 2 UUR288<br>FL040<br>GND  | 8 EE260<br>9000'-10000'<br>IAS 460km/h     |
| 3 UUR281<br>450m/1500' AMSL<br>GND  | 9 EE258<br>9000'-10000'<br>IAS 460km/h     |
| 4 UUR280<br>450m/1500' AMSL<br>GND  | 10 BITSA<br>10000' or above<br>IAS 460km/h |
| 5 UUR280<br>450m/1500' AMSL<br>GND  | 11 BIPSI<br>FL130<br>IAS 500km/h           |
| 6 UUR280<br>450m/1500' AMSL<br>GND  |  |

BEARINGS AND TRACKS ARE MAGNETIC  
ALTITUDES AND ELEVATIONS IN FEET  
DISTANCES IN KILOMETRES

Alt set: -QNH(QFE on req);  
-hPa(mm on req).

SHEREMETYEVO TOWER	118.700	120.700	131.500	119.300
SHEREMETYEVO ARRIVAL	122.700	135.900	118.100	126.600
SHEREMETYEVO DEPARTURE	120.675			
MOSCOW DEPARTURE	118.550	118.950	124.200	130.375

CHANGE: NIL