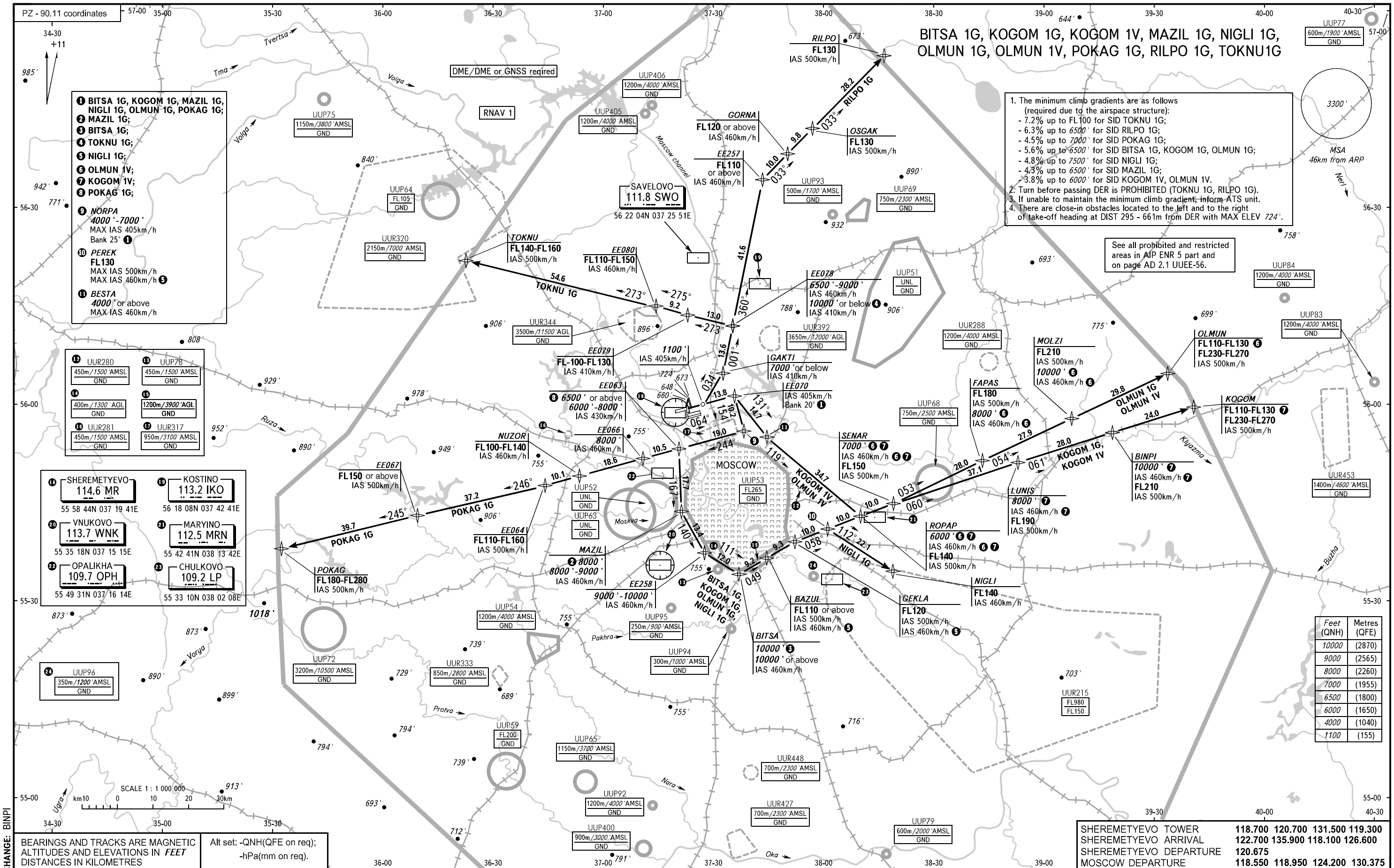


STANDARD DEPARTURE CHART  
INSTRUMENT (SID) - ICAO

TRANSITION  
ALTITUDE: 10000'

MOSCOW, RUSSIA  
SHEREMETYEVO  
RNAV RWY 06L



- 1 BITSA 1G, KOGOM 1G, MAZIL 1G, NIGLI 1G, OLMUN 1G, POKAG 1G;
- 2 MAZIL 1G;
- 3 BITSA 1G;
- 4 TOKNU 1G;
- 5 NIGLI 1G;
- 6 OLMUN 1V;
- 7 KOGOM 1V;
- 8 POKAG 1G;
- 9 NORPA 4000' - 7000' MAX IAS 405km/h Bank 25° 1
- 10 PEREK FL130 MAX IAS 500km/h MAX IAS 460km/h 5
- 11 BESTA 4000' or above MAX IAS 460km/h

1. The minimum climb gradients are as follows (required due to the airspace structure):
  - 7.2% up to FL100 for SID TOKNU 1G;
  - 6.3% up to 6500' for SID RILPO 1G;
  - 4.5% up to 7000' for SID POKAG 1G;
  - 5.6% up to 6500' for SID BITSA 1G, KOGOM 1G, OLMUN 1G;
  - 4.8% up to 7500' for SID NIGLI 1G;
  - 4.3% up to 6500' for SID MAZIL 1G;
  - 3.8% up to 6000' for SID KOGOM 1V, OLMUN 1V.
2. Turn before passing DER is PROHIBITED (TOKNU 1G, RILPO 1G).
3. If unable to maintain the minimum climb gradient, inform ATS unit.
4. There are close-in obstacles located to the left and to the right of take-off heading at DIST 295 - 661m from DER with MAX ELEV 724'.

See all prohibited and restricted areas in AIP ENR 5 part and on page AD 2.1 UUEE-56.

- 12 UUR280 450m/1500' AMSL GND
- 13 UUR78 450m/1500' AMSL GND
- 14 400m/1300' AGL GND
- 15 1200m/3900' AGL GND
- 16 UUR281 450m/1500' AMSL GND
- 17 UUR317 950m/3100' AMSL GND

- 18 SHEREMETYEVO 114.6 MR 55 58 44N 037 19 41E
- 19 KOSTINO 113.2 IKO 56 18 08N 037 42 41E
- 20 VNUKOVO 113.7 WNK 55 35 18N 037 15 15E
- 21 MARYINO 112.5 MRN 55 42 41N 038 13 42E
- 22 OPALIKHA 109.7 OPH 55 49 31N 037 16 14E
- 23 CHULKOVO 109.2 LP 55 33 10N 038 02 08E

Feet (QNH)	Metres (QFE)
10000	(2870)
9000	(2565)
8000	(2260)
7000	(1955)
6500	(1800)
6000	(1650)
4000	(1040)
1100	(155)

SHEREMETYEVO TOWER	118.700	120.700	131.500	119.300
SHEREMETYEVO ARRIVAL	122.700	135.900	118.100	126.600
SHEREMETYEVO DEPARTURE	120.675			
MOSCOW DEPARTURE	118.550	118.950	124.200	130.375