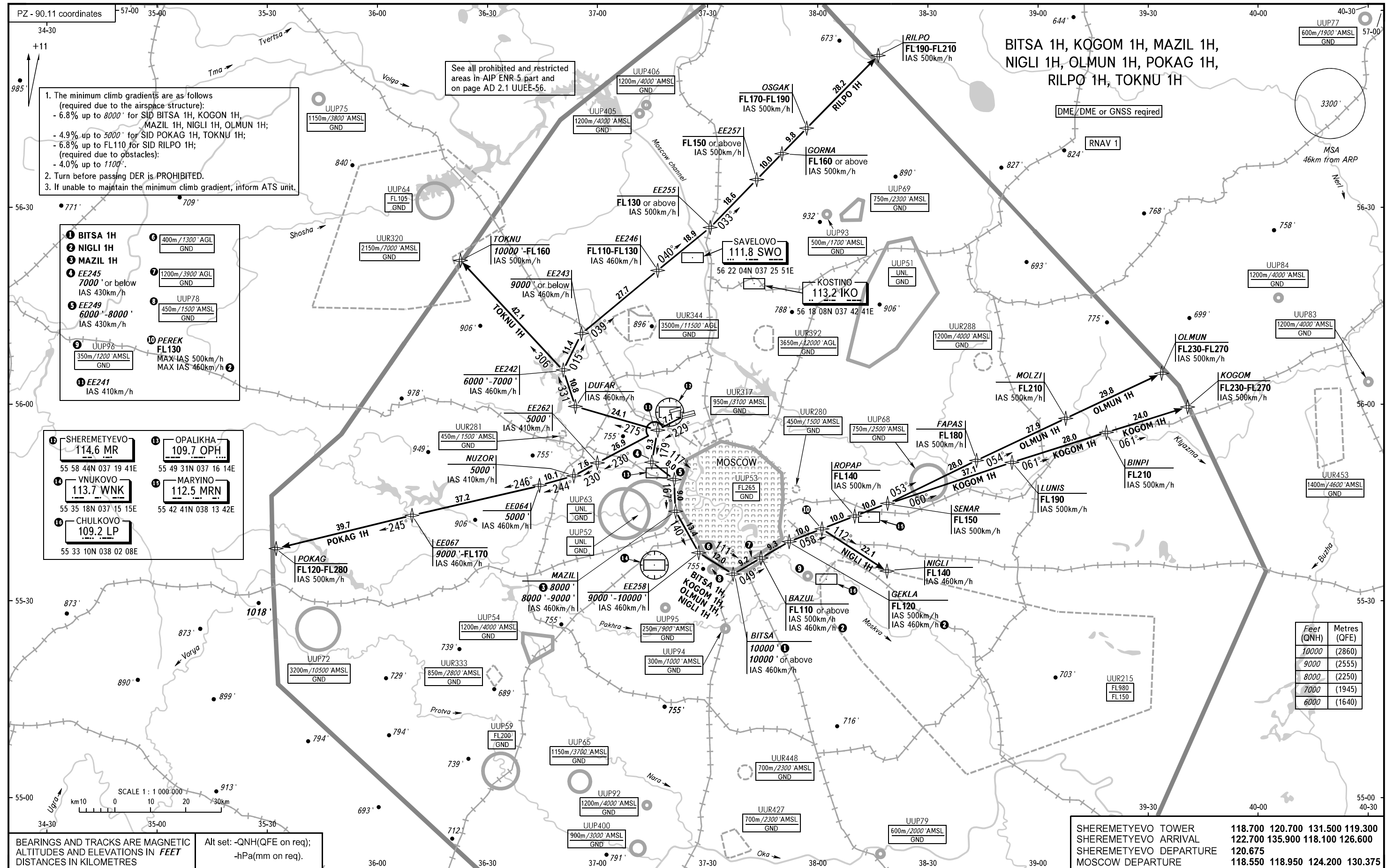


STANDARD DEPARTURE CHART  
INSTRUMENT (SID) - ICAO

TRANSITION  
ALTITUDE : 10000'

MOSCOW, RUSSIA  
SHEREMETYEVO  
RNAV RWY 24C



1. The minimum climb gradients are as follows (required due to the airspace structure):  
 - 6.8% up to 8000' for SID BITSA 1H, KOGON 1H, MAZIL 1H, NIGLI 1H, OLMUN 1H;  
 - 4.9% up to 5000' for SID POKAG 1H, TOKNU 1H;  
 - 6.8% up to FL110 for SID RILPO 1H;  
 (required due to obstacles);  
 - 4.0% up to 1100'.  
 2. Turn before passing DER is PROHIBITED.  
 3. If unable to maintain the minimum climb gradient, inform ATS unit.

See all prohibited and restricted areas in AIP ENR 5 part and on page AD 2.1 UUEE-56.

- 1 BITSA 1H
- 2 NIGLI 1H
- 3 MAZIL 1H
- 4 EE245 7000' or below IAS 430km/h
- 5 EE249 6000'-8000' IAS 430km/h
- 6 400m/1300' AGL GND
- 7 1200m/3900' AGL GND
- 8 UUP78 450m/1500' AMSL GND
- 9 UUP96 350m/1200' AMSL GND
- 10 PEREK FL130 MAX IAS 500km/h MAX IAS 460km/h
- 11 EE241 IAS 410km/h

- 12 SHEREMETYEVO 114.6 MR 55 58 44N 037 19 41E
- 13 VNUKOVO 113.7 WNK 55 35 18N 037 15 15E
- 14 CHULKOVO 109.2 LP 55 33 10N 038 02 08E
- 15 OPALIKHA 109.7 OPH 55 49 31N 037 16 14E
- 16 MARYINO 112.5 MRN 55 42 41N 038 13 42E

Feet (QNH)	Metres (QFE)
10000	(2860)
9000	(2555)
8000	(2250)
7000	(1945)
6000	(1640)

SHEREMETYEVO TOWER	118.700	120.700	131.500	119.300
SHEREMETYEVO ARRIVAL	122.700	135.900	118.100	126.600
SHEREMETYEVO DEPARTURE	120.675			
MOSCOW DEPARTURE	118.550	118.950	124.200	130.375

CHANGE: NIL