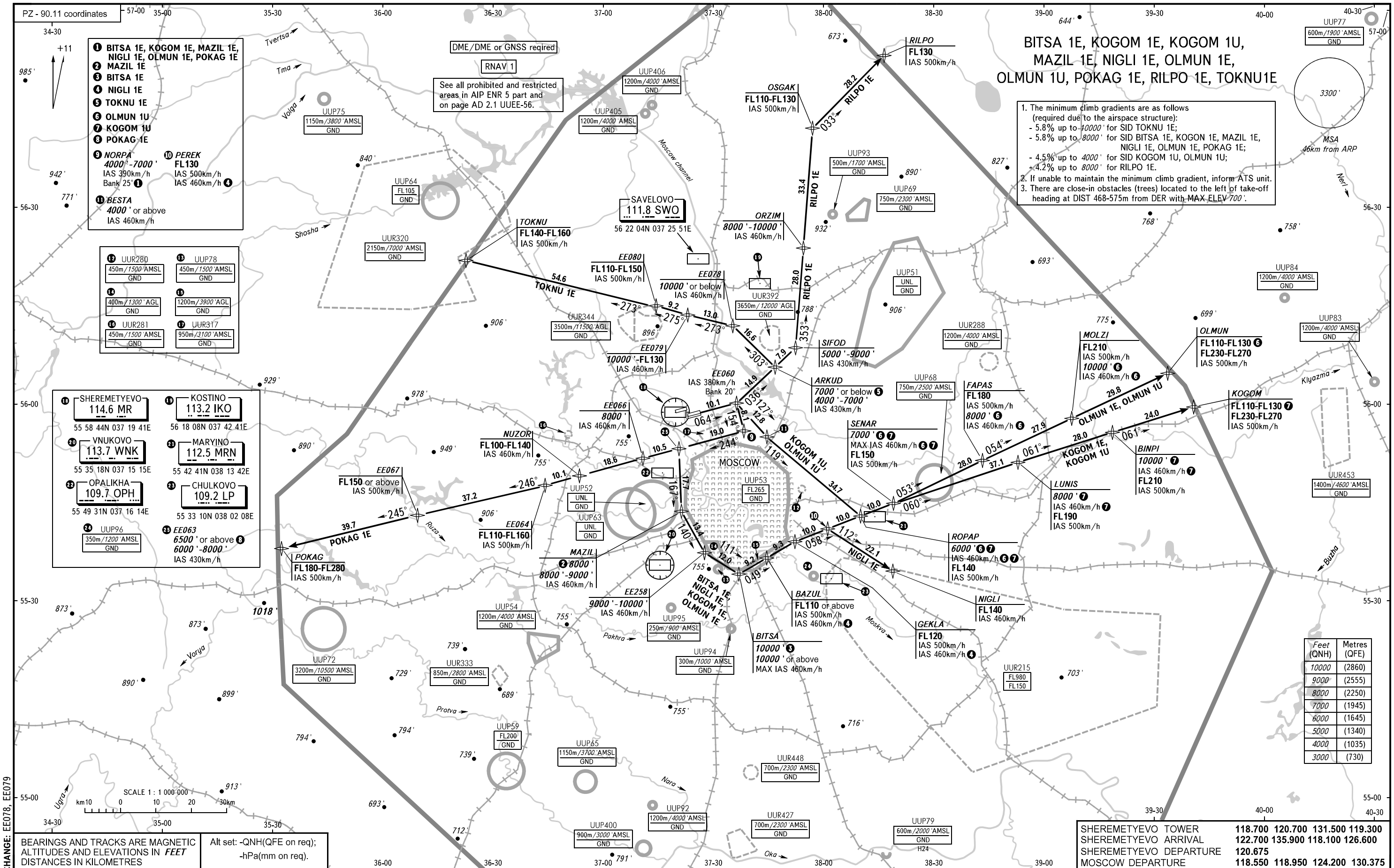


STANDARD DEPARTURE CHART
INSTRUMENT (SID) - ICAO

MOSCOW, RUSSIA
SHEREMETYEVO
RNAV RWY 06C

TRANSITION
ALTITUDE : 10000'



- 1 BITSA 1E, KOGOM 1E, MAZIL 1E, NIGLI 1E, OLMUN 1E, POKAG 1E
- 2 MAZIL 1E
- 3 BITSA 1E
- 4 NIGLI 1E
- 5 TOKNU 1E
- 6 OLMUN 1U
- 7 KOGOM 1U
- 8 POKAG 1E
- 9 NORPA 4000' - 7000' IAS 390km/h Bank 25°
- 10 PEREK FL130 IAS 500km/h IAS 460km/h
- 11 BESTA 4000' or above IAS 460km/h

- 12 UUR280 450m/1500' AMSL GND
- 13 UUP78 450m/1500' AMSL GND
- 14 400m/1300' AGL GND
- 15 1200m/3900' AGL GND
- 16 UUR281 450m/1500' AMSL GND
- 17 UUR317 950m/3100' AMSL GND

- 18 SHEREMETYEVO 114.6 MR 55 58 44N 037 19 41E
- 19 KOSTINO 113.2 IKO 56 18 08N 037 42 41E
- 20 VNUKOVO 113.7 WNK 55 35 18N 037 15 15E
- 21 MARYINO 112.5 MRN 55 42 41N 038 13 42E
- 22 OPALIKHA 109.7 OPH 55 49 31N 037 16 14E
- 23 CHULKOVO 109.2 LP 55 33 10N 038 02 08E
- 24 UUP96 350m/1200' AMSL GND
- 25 EE063 6500' or above 6000' - 8000' IAS 430km/h

BITSA 1E, KOGOM 1E, KOGOM 1U, MAZIL 1E, NIGLI 1E, OLMUN 1E, OLMUN 1U, POKAG 1E, RILPO 1E, TOKNU1E

1. The minimum climb gradients are as follows (required due to the airspace structure):
 - 5.8% up to 10000' for SID TOKNU 1E;
 - 5.8% up to 8000' for SID BITSA 1E, KOGOM 1E, MAZIL 1E, NIGLI 1E, OLMUN 1E, POKAG 1E;
 - 4.5% up to 4000' for SID KOGOM 1U, OLMUN 1U;
 - 4.2% up to 8000' for RILPO 1E.
2. If unable to maintain the minimum climb gradient, inform ATS unit.
3. There are close-in obstacles (trees) located to the left of take-off heading at DIST 468-575m from DER with MAX ELEV 700'.

Feet (QNH)	Metres (QFE)
10000	(2860)
9000	(2555)
8000	(2250)
7000	(1945)
6000	(1645)
5000	(1340)
4000	(1035)
3000	(730)

SHEREMETYEVO TOWER	118.700	120.700	131.500	119.300
SHEREMETYEVO ARRIVAL	122.700	135.900	118.100	126.600
SHEREMETYEVO DEPARTURE	120.675			
MOSCOW DEPARTURE	118.550	118.950	124.200	130.375

CHANGE: EE078, EE079