

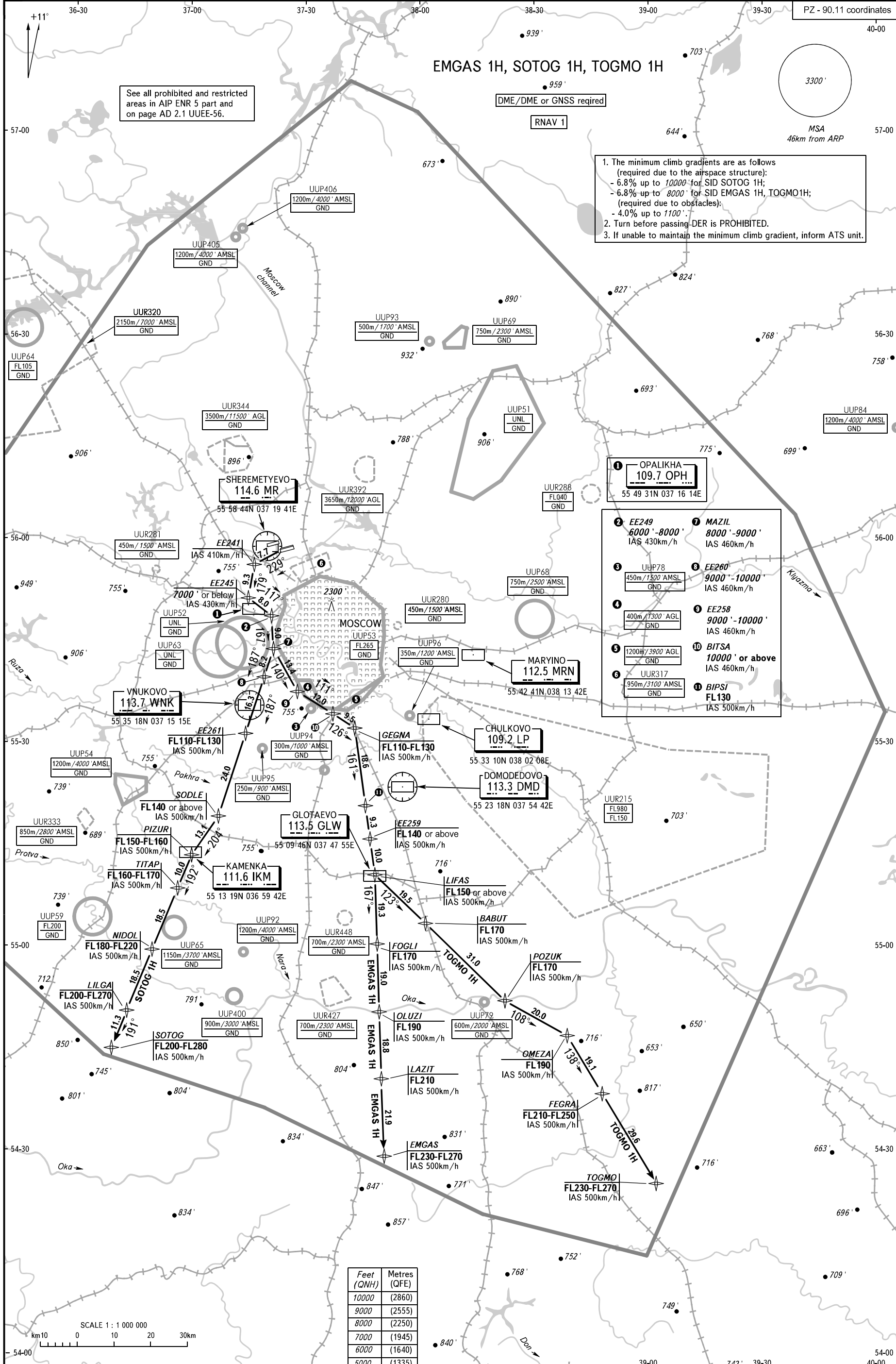
EMGAS 1H, SOTOG 1H, TOGMO 1H

See all prohibited and restricted areas in AIP ENR 5 part and on page AD 2.1 UUEE-56.

DME/DME or GNSS required

RNAV 1

- The minimum climb gradients are as follows (required due to the airspace structure):
 - 6.8% up to 10000' for SID SOTOG 1H;
 - 6.8% up to 8000' for SID EMGAS 1H, TOGMO1H; (required due to obstacles);
 - 4.0% up to 1100'.
- Turn before passing DER is PROHIBITED.
- If unable to maintain the minimum climb gradient, inform ATS unit.



1 OPALIKHA
 109.7 OPH
 55 49 31N 037 16 14E

- | | |
|---------------------------------------|--------------------------------------------|
| 2 EE249
6000'-8000'
IAS 430km/h | 7 MAZIL
8000'-9000'
IAS 460km/h |
| 3 UUP78
450m/1500' AMSL
GND | 8 EE260
9000'-10000'
IAS 460km/h |
| 4 400m/1300' AGL
GND | 9 EE258
9000'-10000'
IAS 460km/h |
| 5 1200m/3900' AGL
GND | 10 BITSA
10000' or above
IAS 460km/h |
| 6 UUR317
950m/3100' AMSL
GND | 11 BIPSI
FL130
IAS 500km/h |

Feet (QNH)	Metres (QFE)
10000	(2860)
9000	(2555)
8000	(2250)
7000	(1945)
6000	(1640)
5000	(1335)

SHEREMETYEVO TOWER	118.700	120.700	131.500	119.300
SHEREMETYEVO ARRIVAL	122.700	135.900	118.100	126.600
SHEREMETYEVO DEPARTURE	120.675			
MOSCOW DEPARTURE	118.550	118.950	124.200	130.375

BEARINGS AND TRACKS ARE MAGNETIC ALTITUDES AND ELEVATIONS IN FEET DISTANCES IN KILOMETRES

Alt set: -QNH(QFE on req);
 -hPa(mm on req).