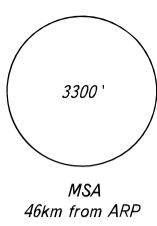


EMGAS 1J, SOTOG 1J, TOGMO 1J

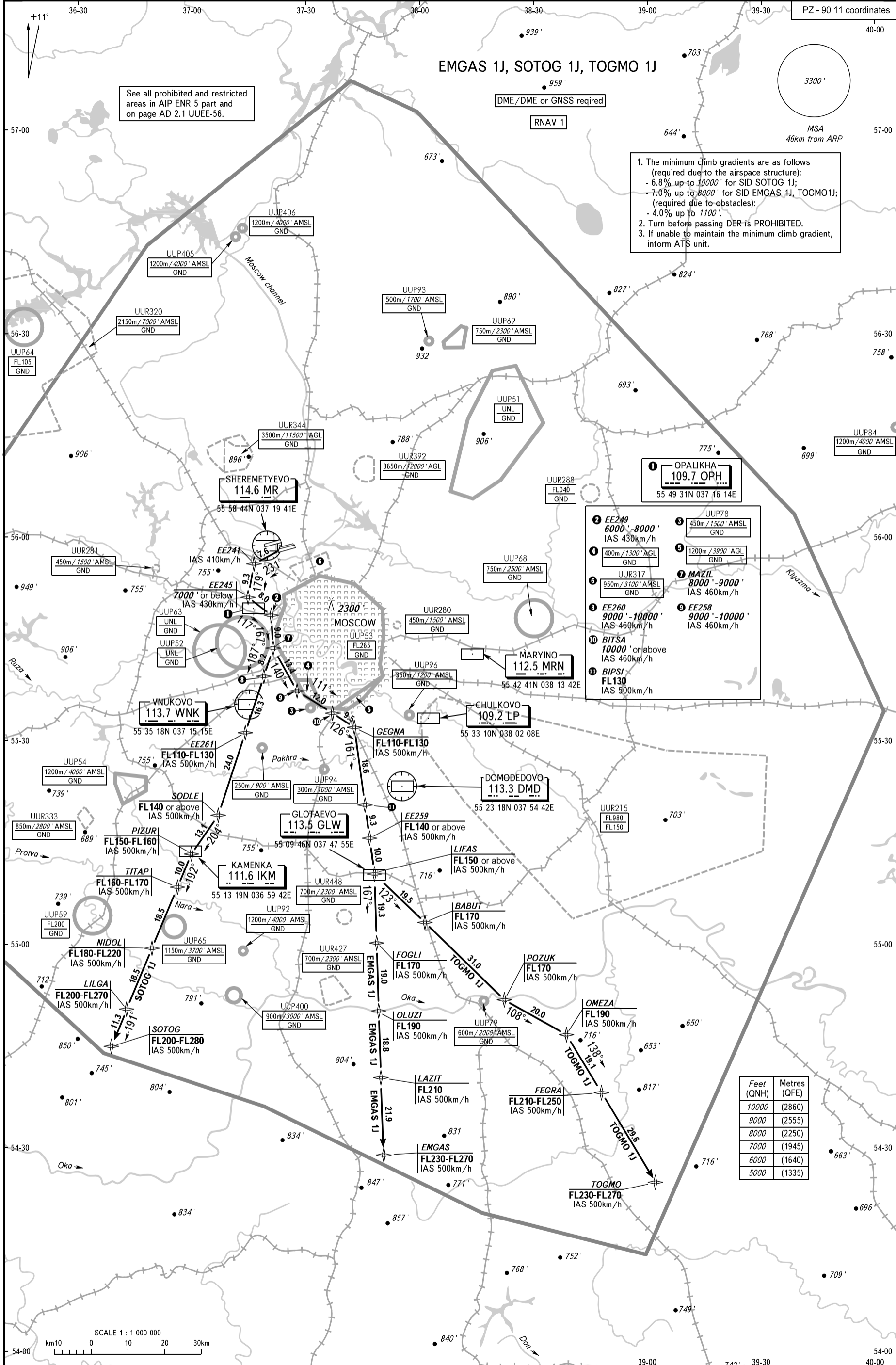
See all prohibited and restricted areas in AIP ENR 5 part and on page AD 2.1 UUEE-56.

DME/DME or GNSS required

RNAV 1



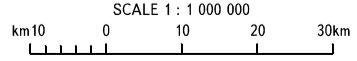
- The minimum climb gradients are as follows (required due to the airspace structure):
 - 6.8% up to 10000' for SID SOTOG 1J;
 - 7.0% up to 8000' for SID EMGAS 1J, TOGMO1J; (required due to obstacles);
 - 4.0% up to 1100'.
- Turn before passing DER is PROHIBITED.
- If unable to maintain the minimum climb gradient, inform ATS unit.



OPALIKHA
109.7 OPH
55 49 31N 037 16 14E

- EE249 6000'-8000' IAS 430km/h
- 400m/1300' AGL GND
- UUR317 950m/3100' AMSL GND
- EE260 9000'-10000' IAS 460km/h
- BITSA 10000' or above IAS 460km/h
- BIPSI FL130 IAS 500km/h
- UUP78 450m/1500' AMSL GND
- 1200m/3900' AGL GND
- MAZIL 8000'-9000' IAS 460km/h
- EE258 9000'-10000' IAS 460km/h

Feet (QNH)	Metres (QFE)
10000	(2860)
9000	(2555)
8000	(2250)
7000	(1945)
6000	(1640)
5000	(1335)



BEARINGS AND TRACKS ARE MAGNETIC ALTITUDES AND ELEVATIONS IN FEET DISTANCES IN KILOMETRES
 Alt set: -QNH(QFE on req);
 -hPa(mm on req).

SHEREMETYEVO TOWER	118.700	120.700	131.500	119.300
SHEREMETYEVO ARRIVAL	122.700	135.900	118.100	126.600
SHEREMETYEVO DEPARTURE	120.675			
MOSCOW DEPARTURE	118.550	118.950	124.200	130.375