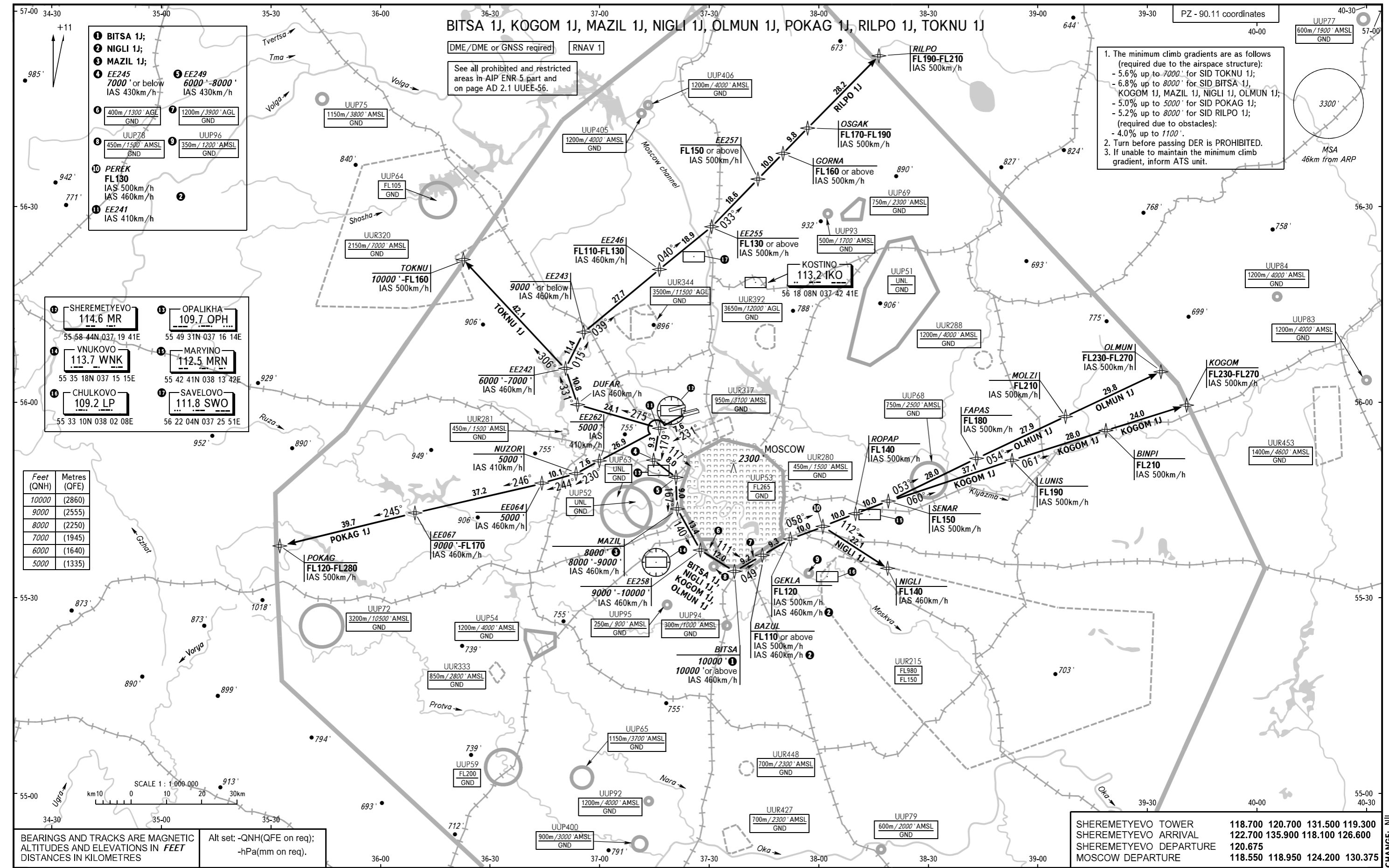


STANDARD DEPARTURE CHART
INSTRUMENT (SID) - ICAO

TRANSITION
ALTITUDE: 10000'

MOSCOW, RUSSIA
SHEREMETYEVO
RNAV RWY 24L



- The minimum climb gradients are as follows (required due to the airspace structure):
 - 5.6% up to 7000' for SID TOKNU 1J;
 - 6.8% up to 8000' for SID BITSA 1J, KOGOM 1J, MAZIL 1J, NIGLI 1J, OLMUN 1J;
 - 5.0% up to 5000' for SID POKAG 1J;
 - 5.2% up to 8000' for SID RILPO 1J;
 - (required due to obstacles):
 - 4.0% up to 1100'.
- Turn before passing DER is PROHIBITED.
- If unable to maintain the minimum climb gradient, inform ATS unit.

Feet (QNH)	Metres (QFE)
10000	(2860)
9000	(2555)
8000	(2250)
7000	(1945)
6000	(1640)
5000	(1335)

BEARINGS AND TRACKS ARE MAGNETIC
ALTITUDES AND ELEVATIONS IN FEET
DISTANCES IN KILOMETRES

Alt set; -QNH(QFE on req);
-hPa(mm on req).

SHEREMETYEVO TOWER	118.700	120.700	131.500	119.300
SHEREMETYEVO ARRIVAL	122.700	135.900	118.100	126.600
SHEREMETYEVO DEPARTURE	120.675			
MOSCOW DEPARTURE	118.550	118.950	124.200	130.375

CHANGE: NIL