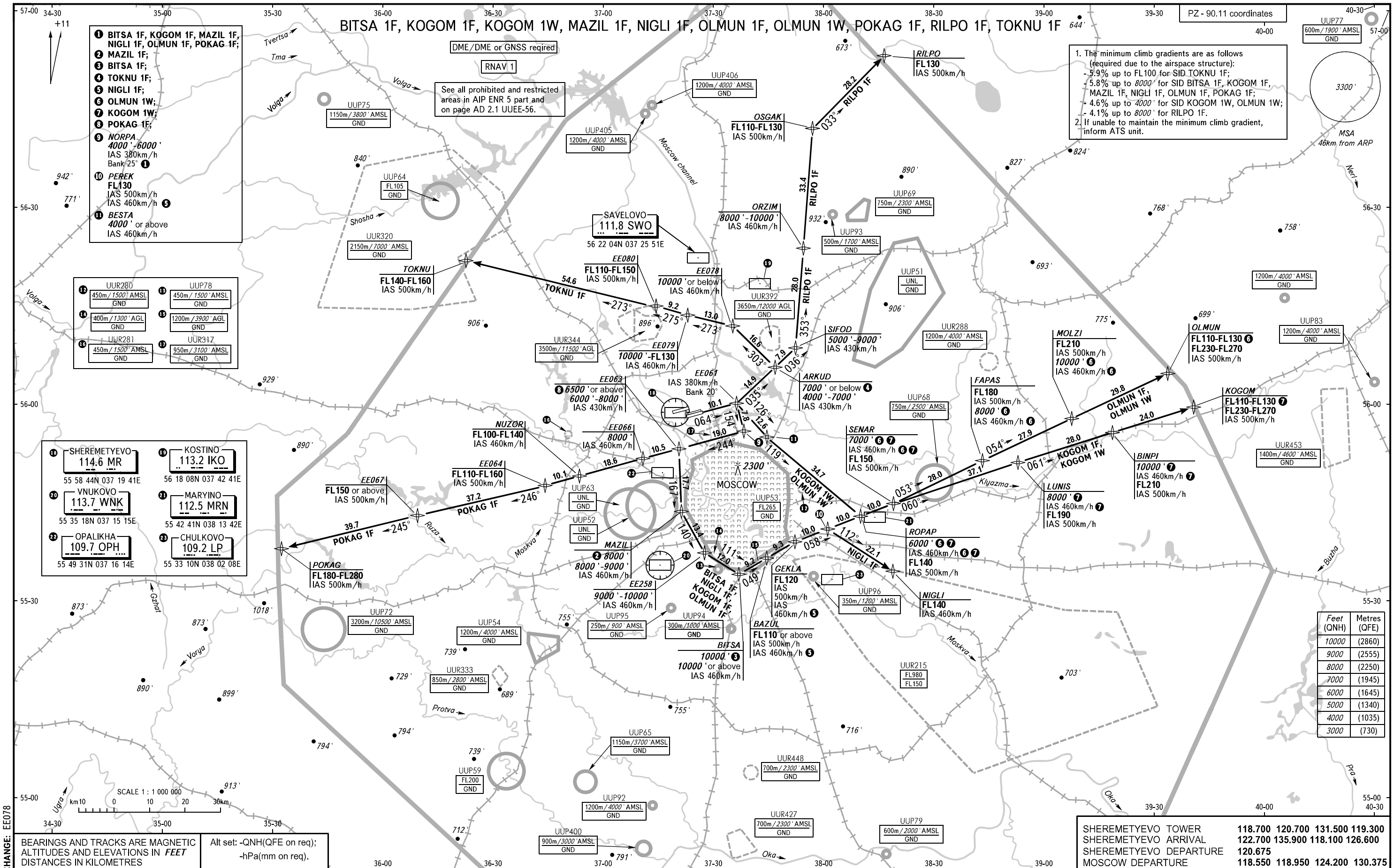


STANDARD DEPARTURE CHART  
INSTRUMENT (SID) - ICAO

TRANSITION  
ALTITUDE: 10000'

MOSCOW, RUSSIA  
SHEREMETYEVO  
RNAV RWY 06R



- 1 BITSA 1F, KOGOM 1F, MAZIL 1F, NIGLI 1F, OLMUN 1F, POKAG 1F;
- 2 MAZIL 1F;
- 3 BITSA 1F;
- 4 TOKNU 1F;
- 5 NIGLI 1F;
- 6 OLMUN 1W;
- 7 KOGOM 1W;
- 8 POKAG 1F;
- 9 NORPA 4000' - 6000' IAS 380km/h Bank 25°
- 10 PEREK FL130 IAS 500km/h IAS 460km/h
- 11 BESTA 4000' or above IAS 460km/h

- 12 UUR280 450m/1500' AMSL GND
- 13 UUR78 450m/1500' AMSL GND
- 14 400m/1300' AGL GND
- 15 1200m/3900' AGL GND
- 16 UUR281 450m/1500' AMSL GND
- 17 UUR317 950m/3100' AMSL GND

- 18 SHEREMETYEVO 114.6 MR 55 58 44N 037 19 41E
- 19 KOSTINO 113.2 IKO 56 18 08N 037 42 41E
- 20 VNUKOVO 113.7 WNK 55 35 18N 037 15 15E
- 21 MARYINO 112.5 MRN 55 42 41N 038 13 42E
- 22 OPALIKHA 109.7 OPH 55 49 31N 037 16 14E
- 23 CHULKOVO 109.2 LP 55 33 10N 038 02 08E

1. The minimum climb gradients are as follows (required due to the airspace structure):  
 - 5.9% up to FL100 for SID TOKNU 1F;  
 - 5.8% up to 8000' for SID BITSA 1F, KOGOM 1F, MAZIL 1F, NIGLI 1F, OLMUN 1F, POKAG 1F;  
 - 4.6% up to 4000' for SID KOGOM 1W, OLMUN 1W;  
 - 4.1% up to 8000' for RILPO 1F.  
 2. If unable to maintain the minimum climb gradient, inform ATS unit.

Feet (QNH)	Metres (QFE)
10000	(2860)
9000	(2555)
8000	(2250)
7000	(1945)
6000	(1645)
5000	(1340)
4000	(1035)
3000	(730)

SHEREMETYEVO TOWER	118.700	120.700	131.500	119.300
SHEREMETYEVO ARRIVAL	122.700	135.900	118.100	126.600
SHEREMETYEVO DEPARTURE	120.675			
MOSCOW DEPARTURE	118.550	118.950	124.200	130.375