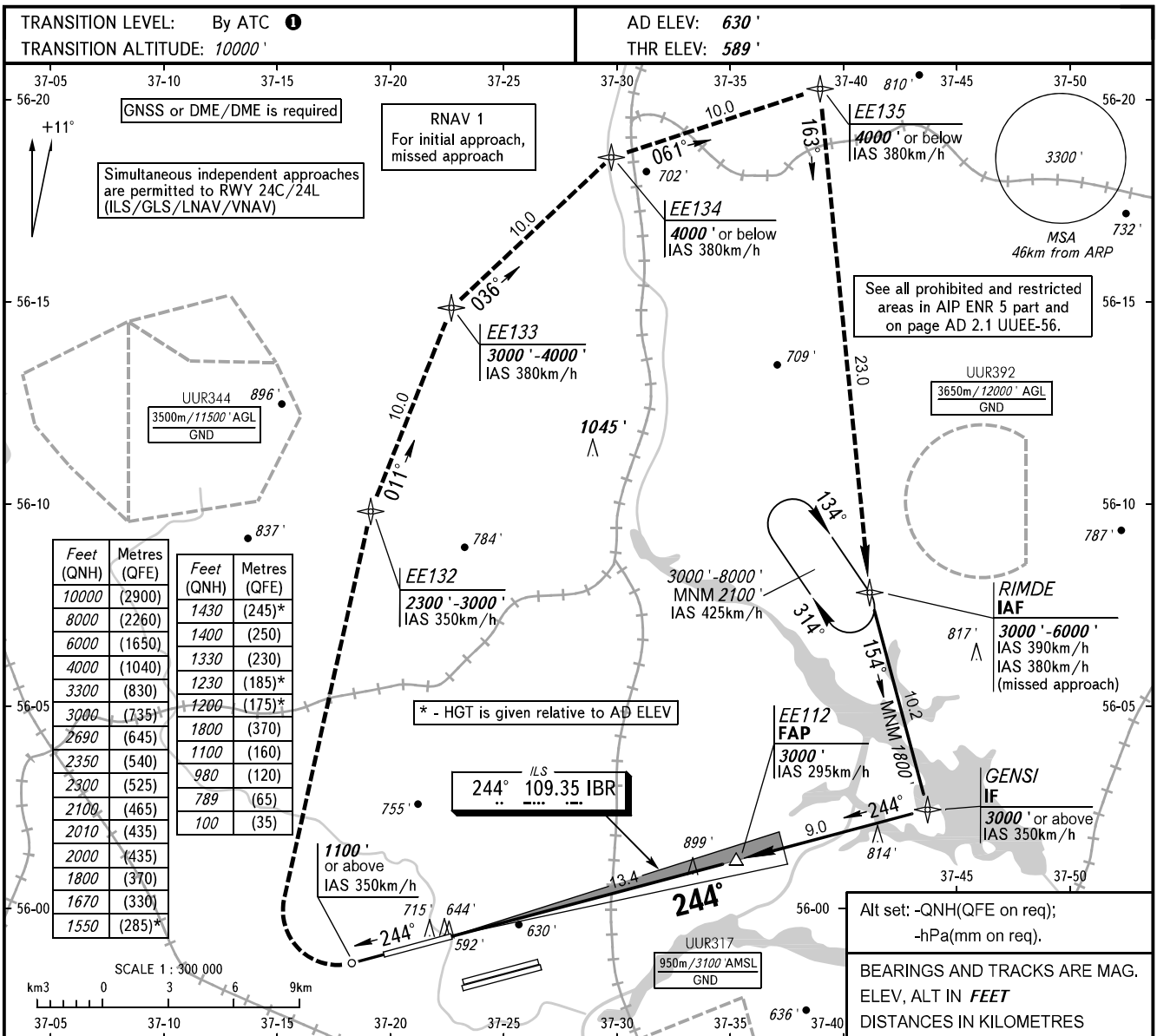


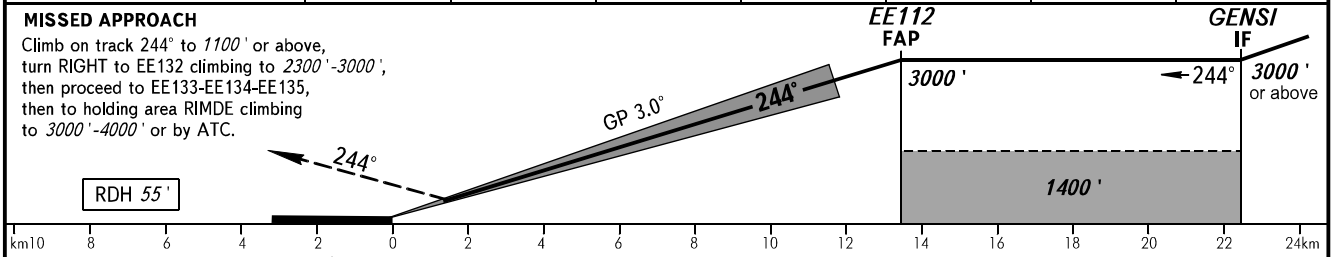
**INSTRUMENT
APPROACH
CHART - ICAO**

SHEREMETYEVO ARRIVAL **122.700 135.900**
118.100 126.600

MOSCOW, RUSSIA
SHEREMETYEVO
ILS X RWY 24R CAT I/II/III



DIST to RW24R	2.0	4.0	6.0	8.0	10.0	12.0	13.4
ALTITUDE	980'	1330'	1670'	2010'	2350'	2690'	3000'



OCA(H)		A	B	C	D	① - FL110 when QNH is 1013 hPa (760mm mercury column) or above; - FL120 when QNH is 977 hPa (733mm mercury column) or above, but less than 1013 hPa (760mm mercury column); - FL130 when QNH is less than 977 hPa (733mm mercury column).	
Straight-in Approach	MNM climb gradient for missed APCH	CAT I	789' (200')	789' (200')	789' (200')		789' (200')
		CAT II	(100')	(100')	(100')		(100')
		CAT IIIA	APPROVED				
Circling			1200' (570')	1230' (600')	1430' (800')	1550' (920')	

GROUND SPEED	km/h	150	180	210	240	270	300	330	360	390	420	450
	m/s		2.2	2.6	3.0	3.5	3.9	4.3	4.8	5.2	5.6	6.1
RATE OF DESCENT	ft/min		427	512	597	682	768	853	938	1024	1109	1280