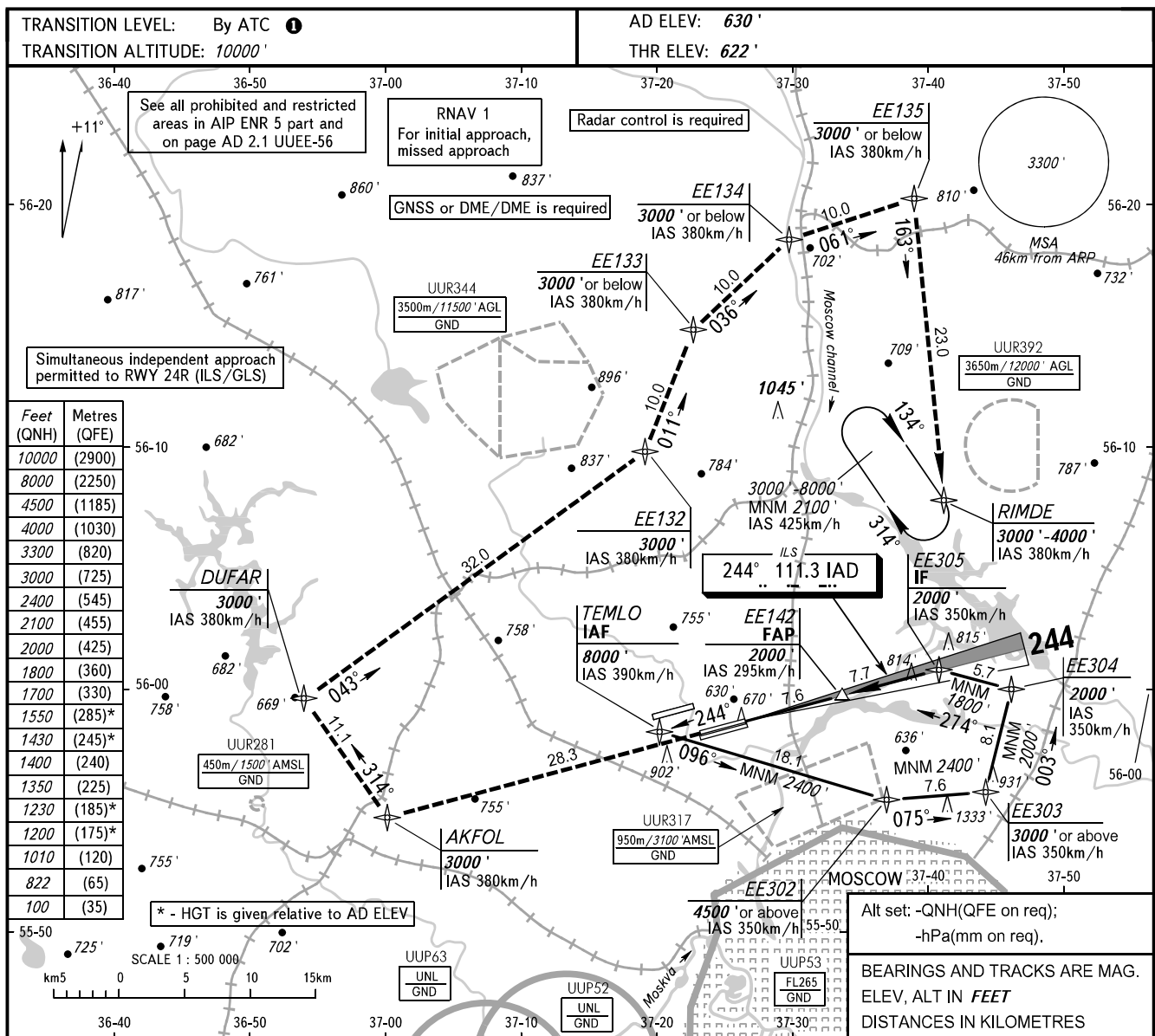


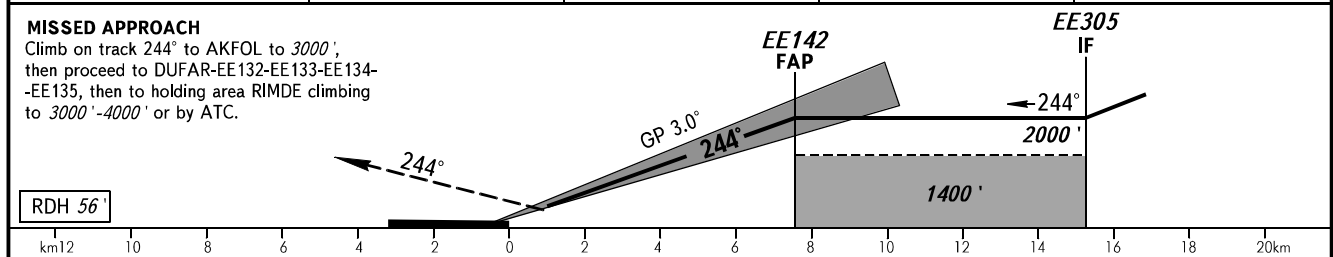
**INSTRUMENT
APPROACH
CHART - ICAO**

SHEREMETYEVO ARRIVAL 122.700 135.900
118.100 126.600

MOSCOW, RUSSIA
SHEREMETYEVO
ILS Y RWY 24C CAT I/II/III



DIST to RW24C	2.0	4.0	6.0	7.6
ALTITUDE	1010'	1350'	1700'	2000'



MISSED APPROACH		Climb on track 244° to AKFOL to 3000', then proceed to DUFAR-EE132-EE133-EE134-EE135, then to holding area RIMDE climbing to 3000'-4000' or by ATC.											
OCA(H)		A	B	C	D	① - FL110 when QNH is 1013 hPa (760mm mercury column) or above; - FL120 when QNH is 977 hPa (733mm mercury column) or above, but less than 1013 hPa (760mm mercury column); - FL130 when QNH is less than 977 hPa (733mm mercury column).							
Straight-in Approach	MNM climb gradient for missed APCH	CAT I	822' (200')	822' (200')	822' (200')	822' (200')							
		CAT II	(100')	(100')	(100')	(100')							
		CAT III	APPROVED										
Circling		1200' (570')	1230' (600')	1430' (800')	1550' (920')								
GROUND SPEED		km/h	150	180	210	240	270	300	330	360	390	420	450
RATE OF DESCENT		m/s	2.2	2.6	3.1	3.5	3.9	4.3	4.8	5.2	5.6	6.1	6.5
		ft/min	427	512	597	683	768	853	939	1024	1109	1195	1280