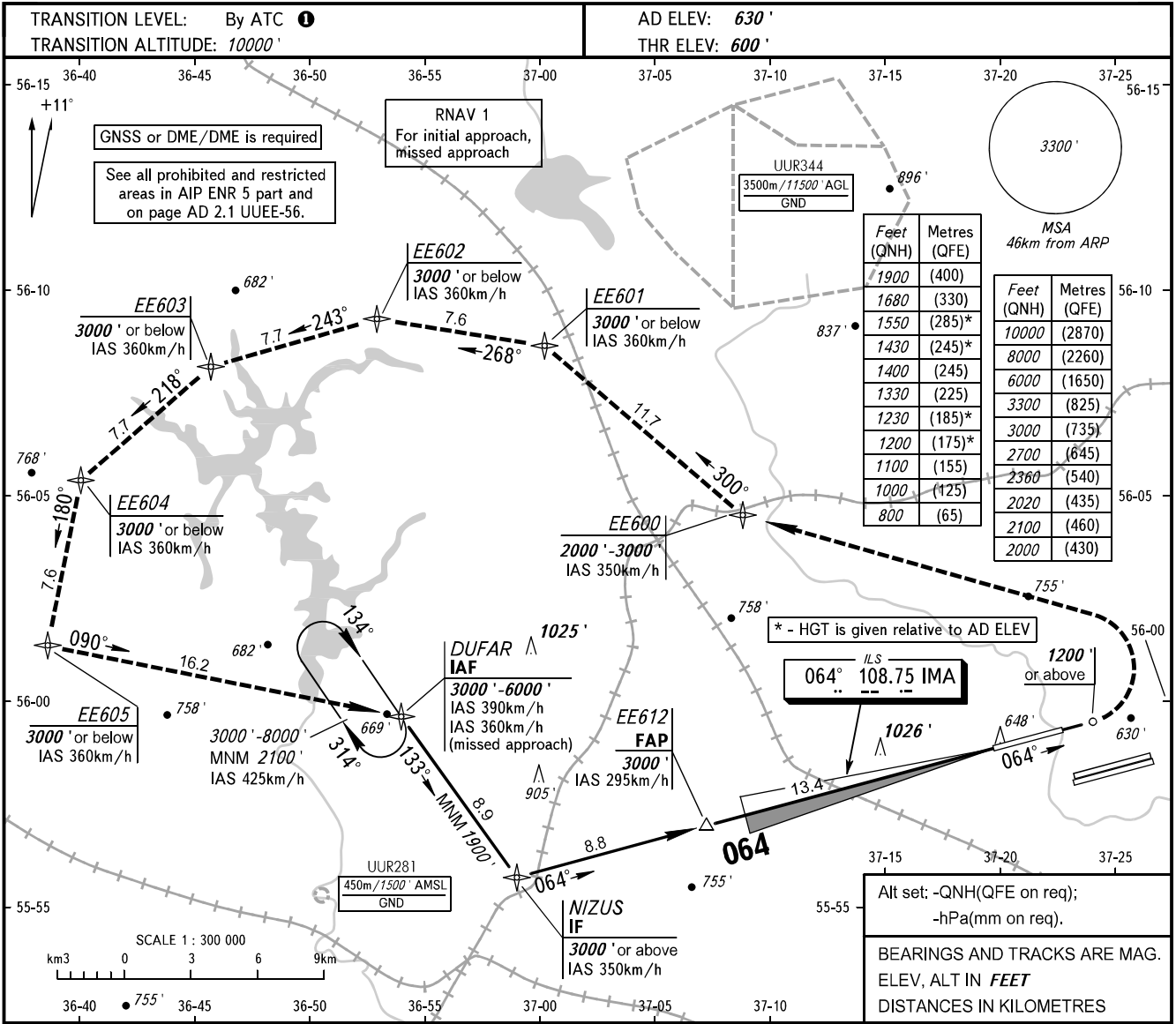


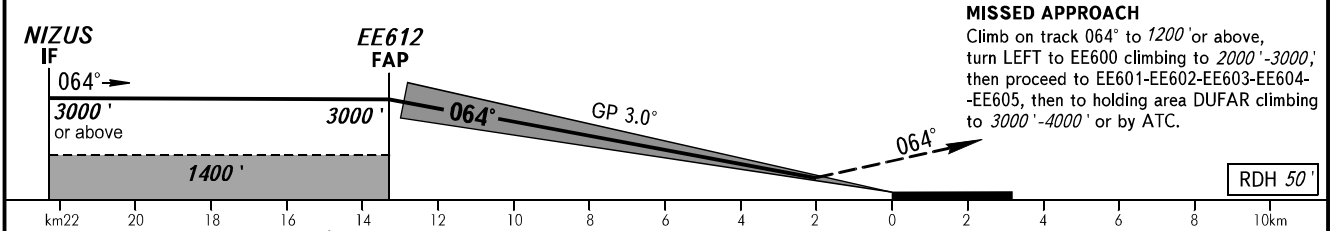
**INSTRUMENT
APPROACH
CHART - ICAO**

SHEREMETYEVO ARRIVAL 122.700 135.900
118.100 126.600

**MOSCOW, RUSSIA
SHEREMETYEVO
ILS RWY 06L CAT I/II/III**



DIST to RW06L	13.4	12.0	10.0	8.0	6.0	4.0	2.0
ALTITUDE	3000'	2700'	2360'	2020'	1680'	1330'	1000'



OCA(H)		A	B	C	D								
Straight-in Approach	CAT I	800' (200')	800' (200')	800' (200')	800' (200')								
	CAT II	(100')	(100')	(100')	(100')								
	CAT IIIA	APPROVED											
Circling		1200' (570')	1230' (600')	1430' (800')	1550' (920')								
GROUND SPEED		km/h	150	180	210	240	270	300	330	360	390	420	450
RATE OF DESCENT		m/s	2.2	2.6	3.0	3.5	3.9	4.3	4.8	5.2	5.6	6.1	6.5
		ft/min	427	512	597	682	768	853	938	1024	1109	1195	1280

① - FL110 when QNH is 1013 hPa (760mm mercury column) or above;
- FL120 when QNH is 977 hPa (733mm mercury column) or above, but less than 1013 hPa (760mm mercury column);
- FL130 when QNH is less than 977 hPa (733mm mercury column).