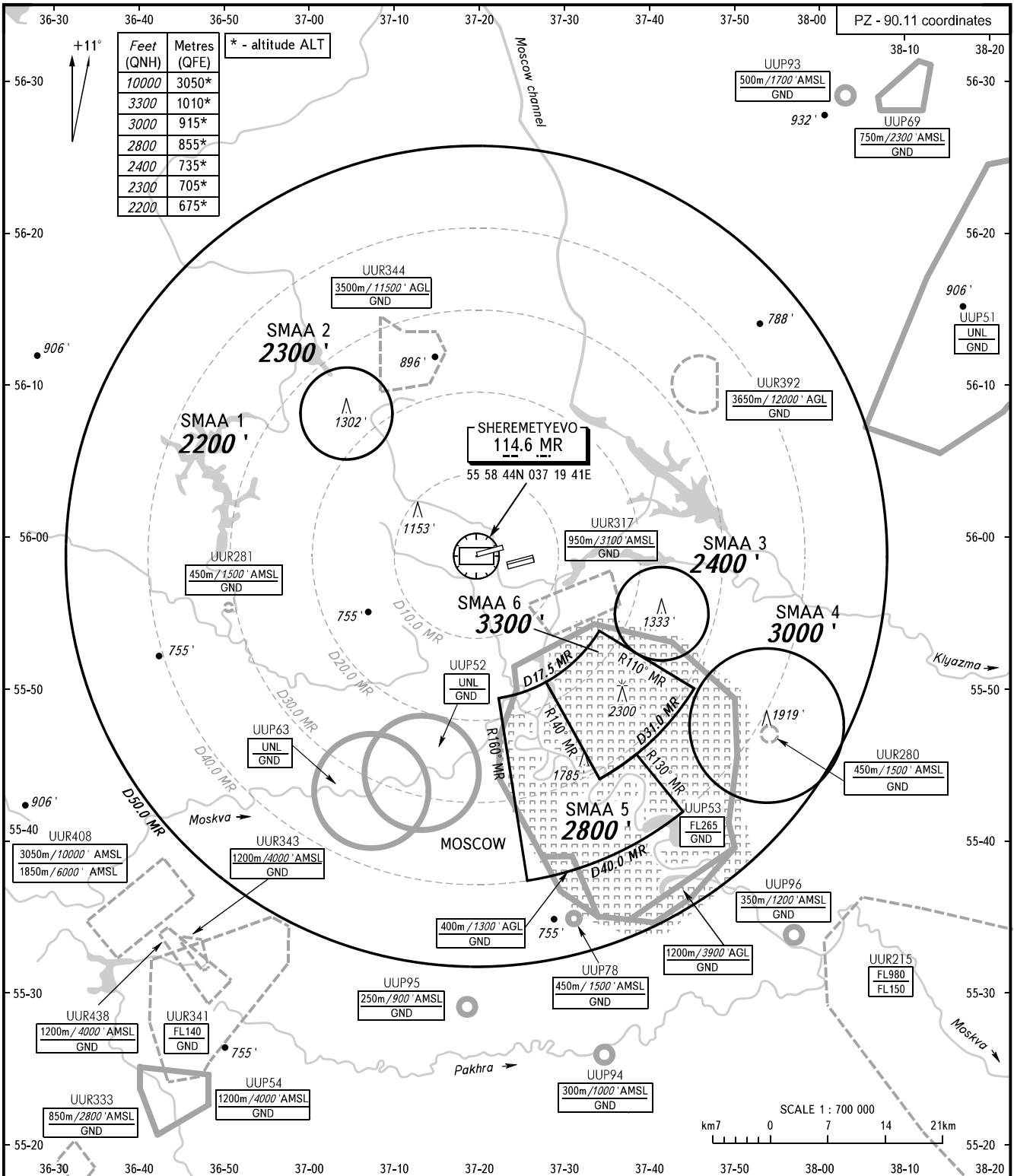


ATC SURVEILLANCE MINIMUM  
ALTITUDE CHART - ICAO

ELEV  
630'  
TRANSITION ALTITUDE: 10000'

MOSCOW, RUSSIA  
SHEREMETYEVO



MOSCOW	DEPARTURE	118.950
SHEREMETYEVO	DEPARTURE	120.675
SHEREMETYEVO	ARRIVAL	118.100 122.700 126.600 135.900

**WARNING:**

- The chart may only be used for cross-checking of altitudes assigned while the aircraft is under radar control.
- When vectoring is carried out under low-temperature conditions, minimum vectoring altitudes for IFR flight must be corrected by altimeter temperature correction.

BEARINGS AND TRACKS ARE MAGNETIC  
ALTITUDES AND ELEVATIONS IN FEET  
DISTANCES IN KILOMETRES

Alt set: -QNH(QFE on req);  
-hPa(mm on req).