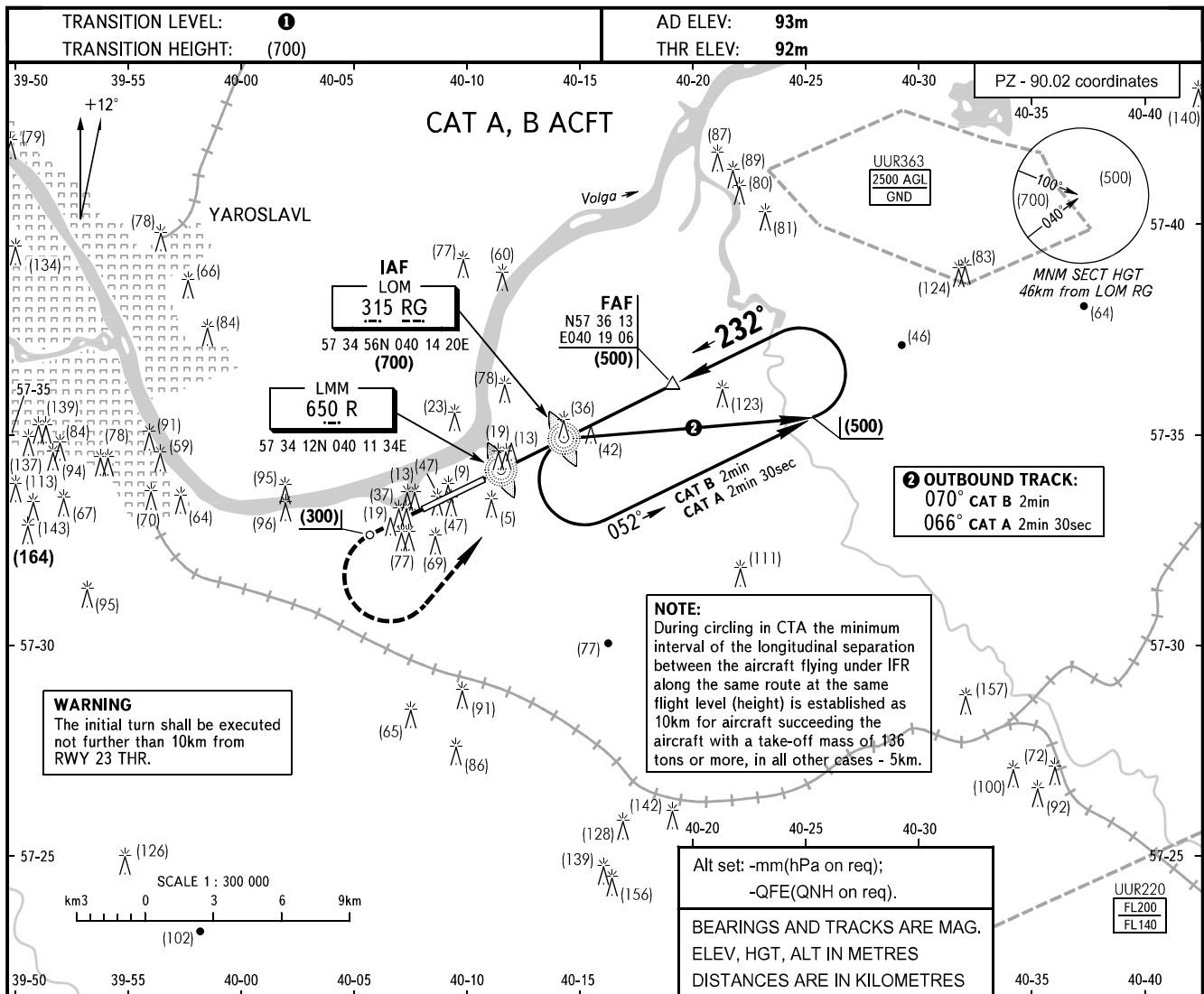


**INSTRUMENT
APPROACH
CHART - ICAO**

YAROSLAVL TOWER 120.300

YAROSLAVL, RUSSIA
TUNOSHNA
2 NDB, NDB RWY 23



MISSED APPROACH
Climb on track 232° to (300), then turn LEFT to LOM RG climbing to (700), then according to chart or by ATC instruction.

MAPt NDB RG **MAPt 2 NDB, NDB R** **IAF RG** **FAF** (500)

FAF is fixed by TAR.

5.2% (3'00")
232°

OCA/H		A	B	C	D
Straight-in	2 NDB	With FAF 190(99)	191(100)		
		WO FAF 365(274)	365(274)		
Approach	NDB R	With FAF 208(117)	208(117)		
		WO FAF 305(214)	305(214)		
	NDB RG	214(123)	228(137)		

1 TRANSITION LEVEL:
- FL040 when atmospheric pressure is 751mm mercury column or above;
- FL050 when atmospheric pressure is 724mm mercury column or above and less than 751mm mercury column;
- FL060 when atmospheric pressure is less than 724mm mercury column.

GROUND SPEED	km/h	150	180	210	240	270	300	330	360	390	420	450
LOM-MAPt NDB RG 3930m	min:sec	1:34	1:19	1:07	1:00	0:52	0:47	0:43	0:39	0:36	0:34	0:32
RATE OF DESCENT	m/s	2.2	2.6	3.1	3.5	3.9	4.4	4.9	5.3	5.8	6.2	6.7

CHANGE: TOWER