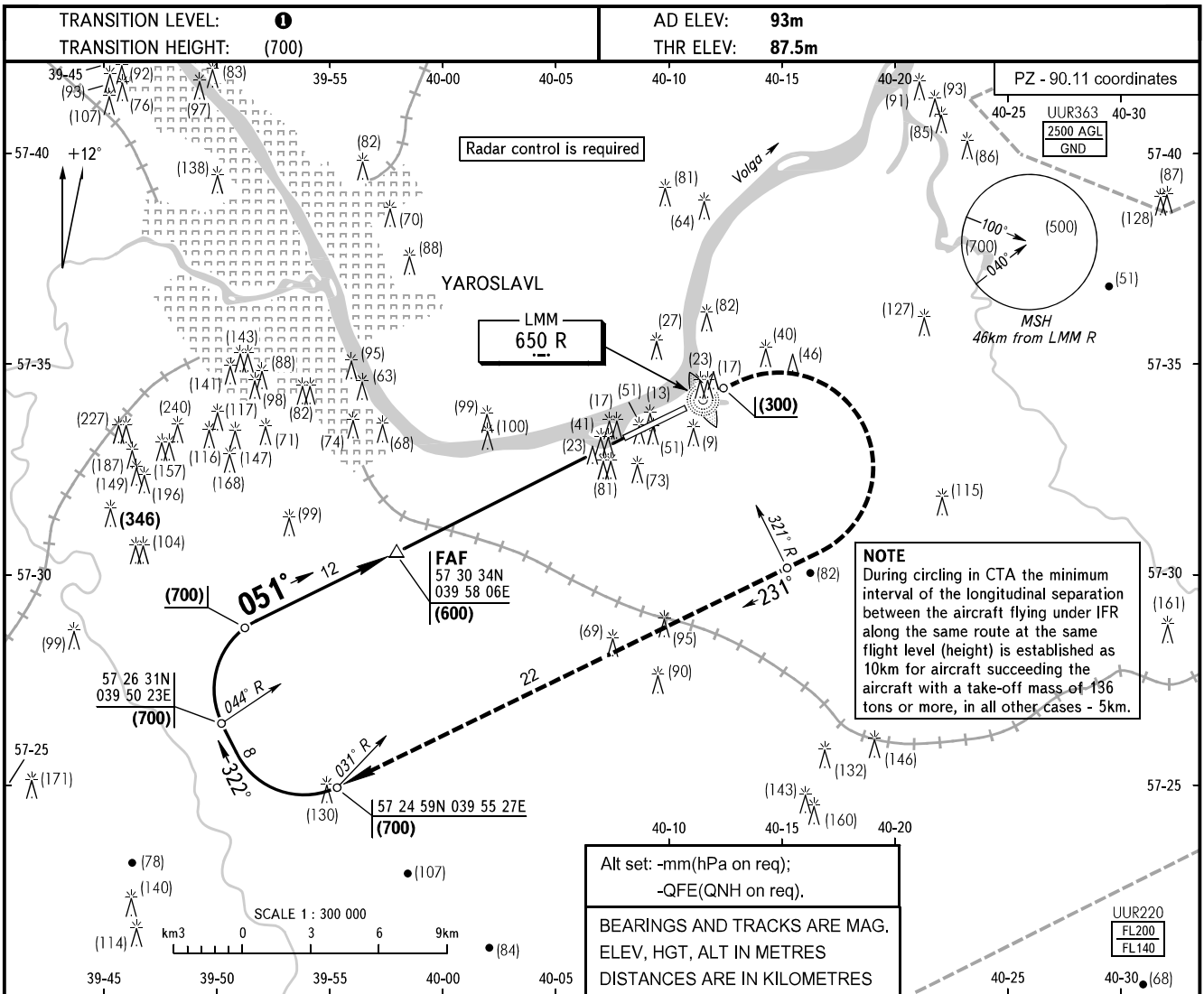


**INSTRUMENT  
APPROACH  
CHART - ICAO**

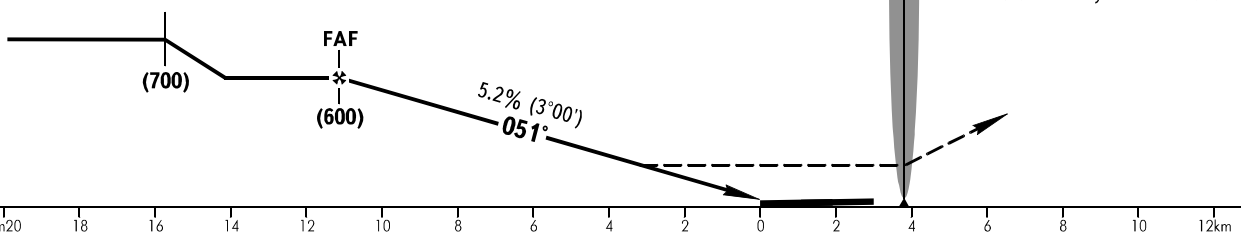
YAROSLAVL TOWER 120.300

**YAROSLAVL, RUSSIA  
TUNOSHNA  
NDB RWY 05**



FAF is fixed by TAR.

**MISSED APPROACH**  
Climb on track 051° to (300), then turn RIGHT on track 231° not earlier than passing LMM R climbing to (700), then according to chart or by ATC instruction.



OCA(H)		A	B	C	D	
Straight-in	NDB	With FAF	255(168)	255(168)	255(168)	255(168)
		WO FAF	338(250)	338(250)	338(250)	338(250)
Approach						

- ① **TRANSITION LEVEL:**
- FL040 when atmospheric pressure is 751mm mercury column or above;
  - FL050 when atmospheric pressure is 724mm mercury column or above and less than 751mm mercury column;
  - FL060 when atmospheric pressure is less than 724mm mercury column.

GROUND SPEED	km/h	150	180	210	240	270	300	330	360	390	420
RATE OF DESCENT	m/s	2.2	2.6	3.1	3.5	3.9	4.4	4.8	5.2	5.6	6.1

CHANGE: New chart