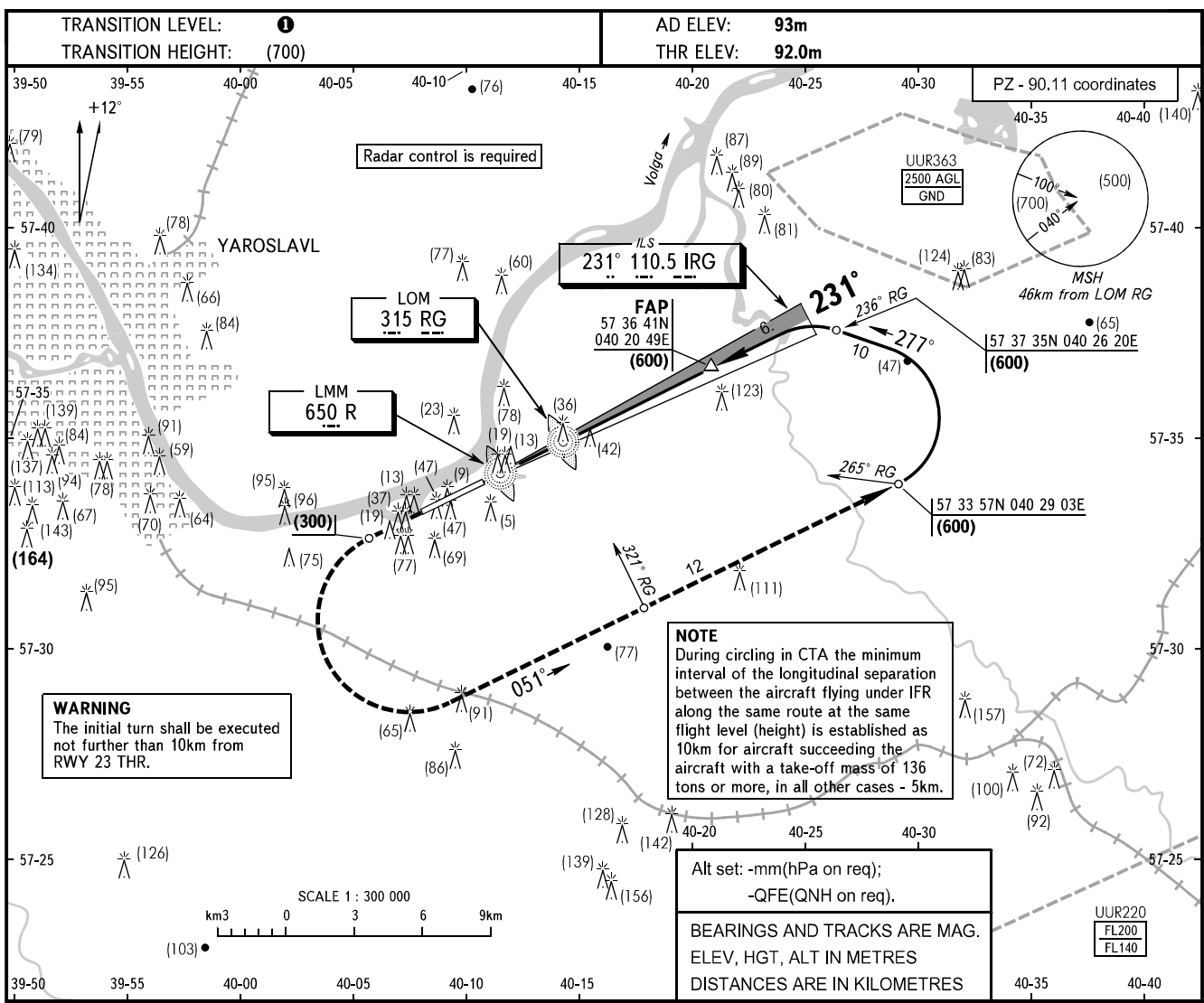


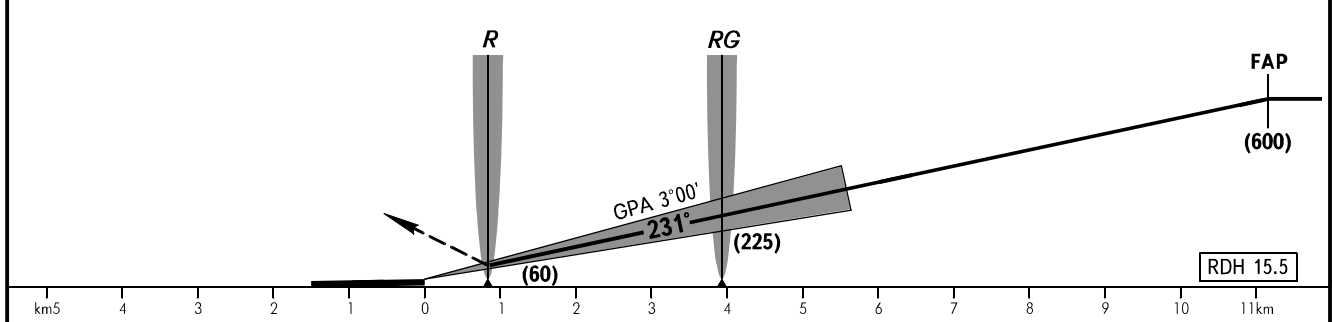
**INSTRUMENT
APPROACH
CHART - ICAO**

YAROSLAVL TOWER **120.300**

YAROSLAVL, RUSSIA
TUNOSHNA
ILS X RWY 23 CAT I



MISSED APPROACH
Climb on track 231° to (300), then turn LEFT on track 051° climbing to (600), then according to chart or by ATC instruction.



OCA(H)		A	B	C	D
Straight-in	CAT I	139(47)	142(50)	147(55)	151(59)
Approach					

① **TRANSITION LEVEL:**

- FL040 when atmospheric pressure is 751mm mercury column or above;
- FL050 when atmospheric pressure is 724mm mercury column or above and less than 751mm mercury column;
- FL060 when atmospheric pressure is less than 724mm mercury column.

CHANGE: New chart