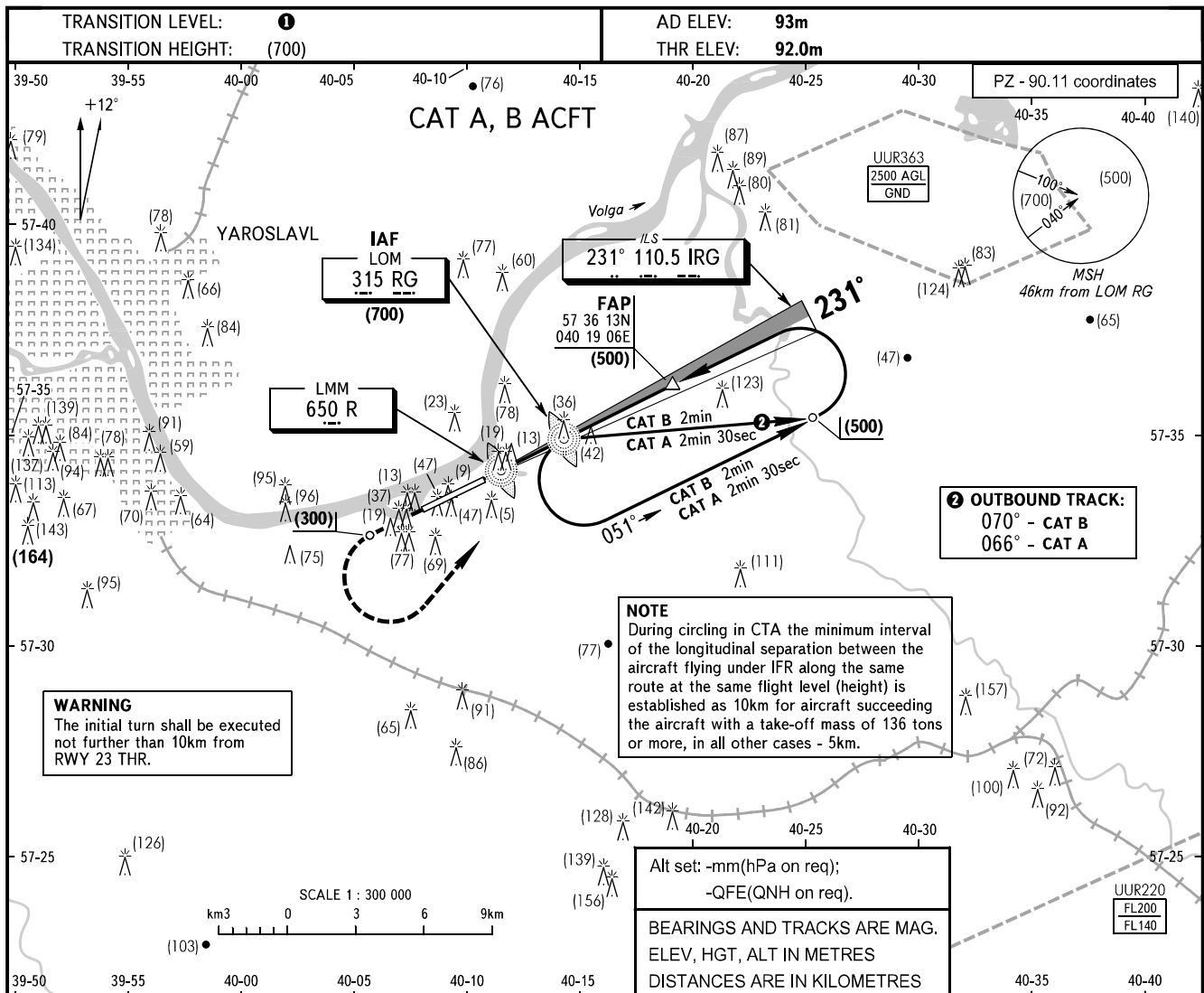


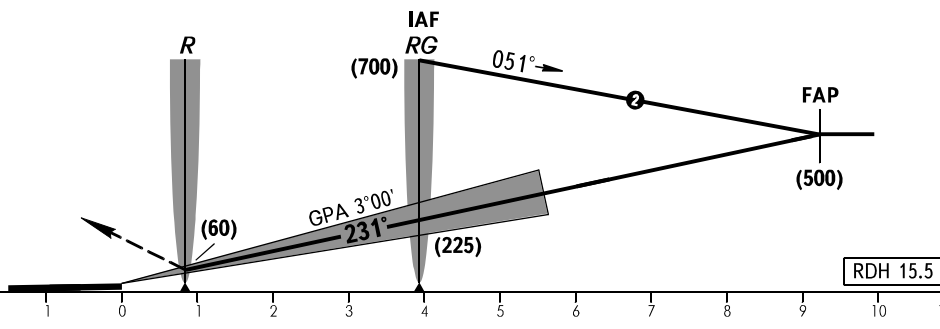
**INSTRUMENT  
APPROACH  
CHART - ICAO**

YAROSLAVL TOWER 120.300

**YAROSLAVL, RUSSIA**  
TUNOSHNA  
ILS Y RWY 23 CAT I



**MISSED APPROACH**  
Climb on track 231° to (300), then turn LEFT to LOM RG climbing to (700), then according to chart or by ATC.



OCA(H)		A	B	C	D
Straight-in	<b>CAT I</b>	139 (47)	142 (50)		
	Approach				

- 1** TRANSITION LEVEL:
- FL040 when atmospheric pressure is 751mm mercury column or above;
  - FL050 when atmospheric pressure is 724mm mercury column or above and less than 751mm mercury column;
  - FL060 when atmospheric pressure is less than 724mm mercury column.