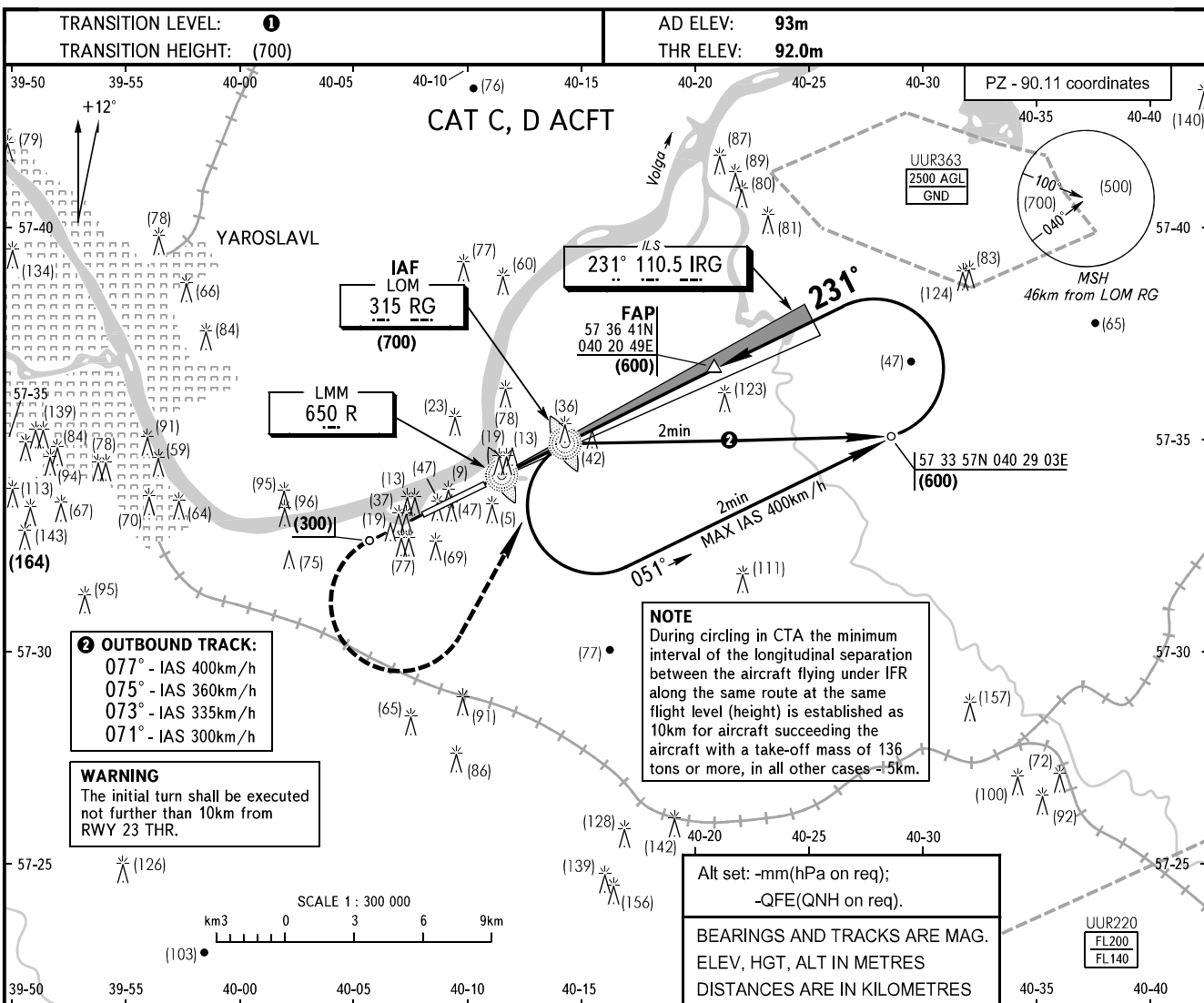


**INSTRUMENT
APPROACH
CHART - ICAO**

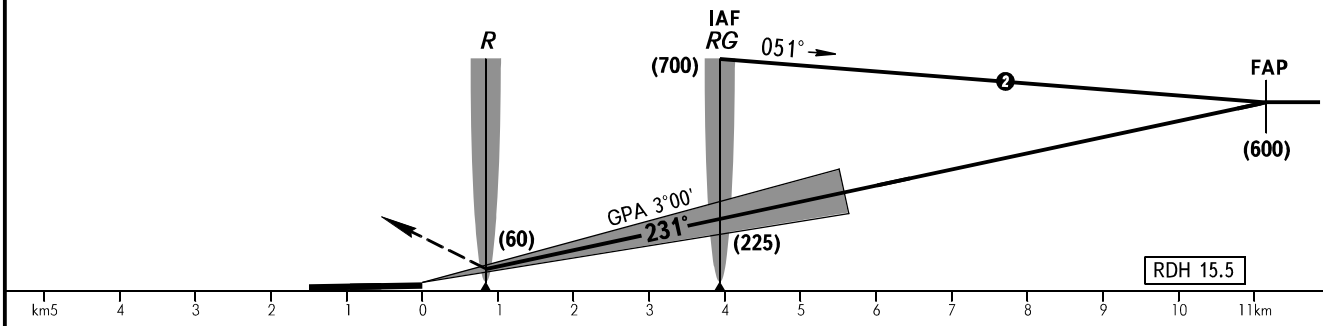
YAROSLAVL TOWER 120.300

**YAROSLAVL, RUSSIA
TUNOSHNA
ILS Z RWY 23 CAT I**



MISSED APPROACH

Climb on track 231° to (300), then turn LEFT to LOM RG climbing to (700), then according to chart or by ATC.



OCA(H)		A	B	C	D
Straight-in	CAT I			147(55)	151(59)
Approach					

① TRANSITION LEVEL:

- FL040 when atmospheric pressure is 751mm mercury column or above;
- FL050 when atmospheric pressure is 724mm mercury column or above and less than 751mm mercury column;
- FL060 when atmospheric pressure is less than 724mm mercury column.