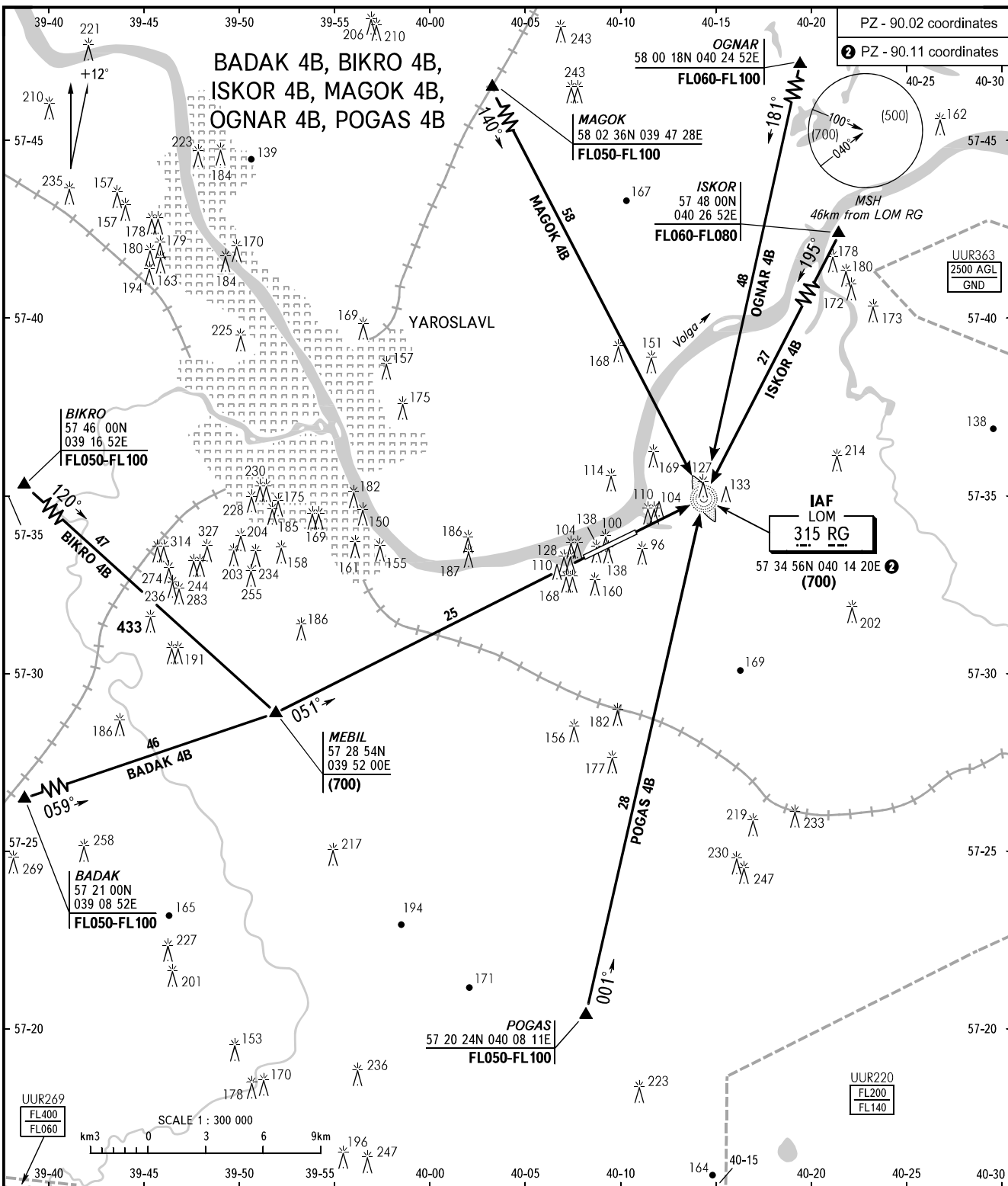


STANDARD ARRIVAL CHART
INSTRUMENT (STAR) - ICAO

YAROSLAVL, RUSSIA
TUNOSHNA
RWY 23

TRANSITION
LEVEL: **1**

PZ - 90.02 coordinates
2 PZ - 90.11 coordinates



YAROSLAVL TOWER **120.300**

- 1** TRANSITION LEVEL:
- FL040 when atmospheric pressure is 751mm mercury column or above;
 - FL050 when atmospheric pressure is 724mm mercury column or above and less than 751mm mercury column;
 - FL060 when atmospheric pressure is less than 724mm mercury column.
- WARNING**
The entry point OGNAR into Yaroslavl/Tunoshna CTA shall be used below FL100 by coordination with the adjacent ATS unit and ACC.

BEARINGS AND TRACKS ARE MAGNETIC
ALTITUDES, HEIGHTS AND ELEVATIONS ARE IN METRES
DISTANCES ARE IN KILOMETRES

CHANGE: New chart